

**REY AKDOGAN**

**SELECT EXHIBITIONS  
2012–2023**

**HANNAH HOFFMAN**

REY AKDOGAN

Born in Germany, 1974.

Lives and works in New York, NY, USA.

---

EDUCATION

- 2004 Whitney Museum of American Art, Independent Study Program, New York , NY, US  
2001 Master of Arts, Central Saint Martins College of Art and Design, London, UK

SOLO EXHIBITIONS

- 2023 subtractions, Miguel Abreu, New York, NY, US  
2022 LOST RECORD, Commercial Street, Los Angeles, CA, US  
2021 subtractions, Galerie Anke Schmidt, Köln, Germany  
2017 Hannah Hoffman, Los Angeles, CA, US  
2017 Faction, Miguel Abreu Gallery, New York, NY, US  
2016 Radio Athènes, Athens, Greece  
2015 Art Basel Statements, Art Basel, Basel, Switzerland  
2015 Crash Rail, Miguel Abreu Gallery, New York, NY, US  
2014 Hannah Hoffman Gallery, Los Angeles, CA, US  
2012 night curtain, Miguel Abreu Gallery, New York, NY, US  
2012 off set, MoMA PSi, New York  
2012 Silent Partner, Andrew Roth Gallery, New York, NY, US  
2011 carousels, rolls and offcuts, Sutton Lane Gallery, London, UK  
2008 Light Flat, Venetia Kapernekas Gallery, New York, NY, US  
2008 Universal Fittings, with a series of performances, talks, and screenings, Common Room2, New  
2007 Irregular Fittings, Ciocca Arte Contemporanea, Milan, Italy

SELECT GROUP EXHIBITIONS & EVENTS

- 2023 Paper Pulp, Galerie Anke Schmidt, Köln, DE  
2021 Regroup Show 2021, Miguel Abreu Gallery, New York, US  
2020 ...Hallo Köln!, Galerie Anke Schmidt, Köln, Germany  
2019 Rey Akdogan and Alan Ruiz, Posenenske Sessions: Form, Dia:Beacon, Beacon, New York, NY, US  
2018 Artistas Xiv Bienal De Cuenca, Cuenca, Ecuador

## HANNAH HOFFMAN

- 2017 Miguel Abreu Gallery at FraenkelLAB, FraenkelLAB, San Francisco, CA, US
- 2015 Green Postcard, curated by Max Henry, Ibid. London, UK
- 2014 Ambulance Falls, curated by Erin Falls, Basilica Hudson, Hudson, NY, US
- 2014 COPIED, Andrew Roth, New York
- 2014 occupy painting, curated by Max Henry, Autocenter, Berlin, Germany
- 2013 Burn these eyes captain, and throw them in the sea!, Rodeo Gallery, Istanbul, Turkey
- 2013 Art Basel Miami Beach, Miguel Abreu Gallery, Miami, FL, US
- 2013 Trust, curated by Michele D'Aurizio, Galerie Balice Hertling, Paris, France
- 2013 Conspicuous Unusable, organized by Leah Pires & Johanna Bergmark, Miguel Abreu Gallery, New York, NY, USA
- 2013 Art|44|Basel, Miguel Abreu Gallery, Basel, Switzerland
- 2013 La Poussière de Soleils, organized by Olivia Shao, Real Fine Arts, New York, NY, US
- 2012 Esta Puerta Pide Clavo, curated by Rivet, Galerie Tatjana Pieter, Ghent, Belgium
- 2012 Surface Affect, Miguel Abreu Gallery, New York, NY, US
- 2012 Exquisite Corpse Pose, curated by Olivia Shao, Elisabeth Ivers Gallery, New York, NY, US
- 2012 zoom, shift, abstract, Simone Subal Gallery, New York, NY, US
- 2010 Holiday Shop at Doyers, organized by Olivia Shao and Jay Sanders, New York, NY, US
- 2010 Blind Sculpture with Gelatin, Greene Naftali Gallery, New York, NY, US
- 2010 10th Anniversary, Kasa Gallery, Istanbul, Turkey
- 2010 Exhibition, six month project in a vacant storefront, 211 Elizabeth Street, New York, NY, US
- 2010 Doyers Plant Shop installation, organized by Olivia Shao and Jay Sanders, New York, NY, US
- 2008 What's Mine Is Yours, curated by Sara Reisman, Basekamp, Philadelphia, PA, US
- 2008 Properly Past, curated by Olga Kopenkina, Rotunda Gallery, Brooklyn, New York, NY, U
- 2008 Holiday Shop at Doyers, organized by Olivia Shao and Jay Sanders, New York, NY, US

## HANNAH HOFFMAN

- 2007 Legal Tender, Kasa Gallery, Istanbul, Turkey
- 2007 Outliners, curated by Stéphane Bauer, Doreen Mend Zorka
- 2007 Lednarova, Caroline Lund, and Christoph Tannert  
Arttransponder, Gallery, Berlin, Germany
- 2007 Human Game, Winners and Losers, curated by Fancesco  
Bonami, Florence, Italy
- 2007 After Art School, curated by Mark Wilsher, London Gallery  
West, London
- 2007 When Artists Say We, curated by Andrea Geyer & Christian
- 2007 Rattemeyer, Artists Space, New York, NY, US
- 2005 Art Primeur revisited, Centrum Beeldende Kunst,  
Dordrecht, The Netherlands
- 2005 In the Shadow of Fallen Heroes, curated by Sara Raza, 2nd  
Bishkek International Art Exhibition
- 2004 Realism Reversed, curated by Helene Lundbye Petersen,  
Christian Dam Galleries, Copenhagen, Denmark
- 2004 Urban Realities: Focus Istanbul, curated by Christoph  
Tannert, Martin Gropius Bau, Berlin, Germany
- 2004 Whitney Museum of American Art ISP exhibition, New  
York, NY, US

### AWARDS & GRANTS

- 2015 Graham Foundation Grantee (with Minerva  
Projects)

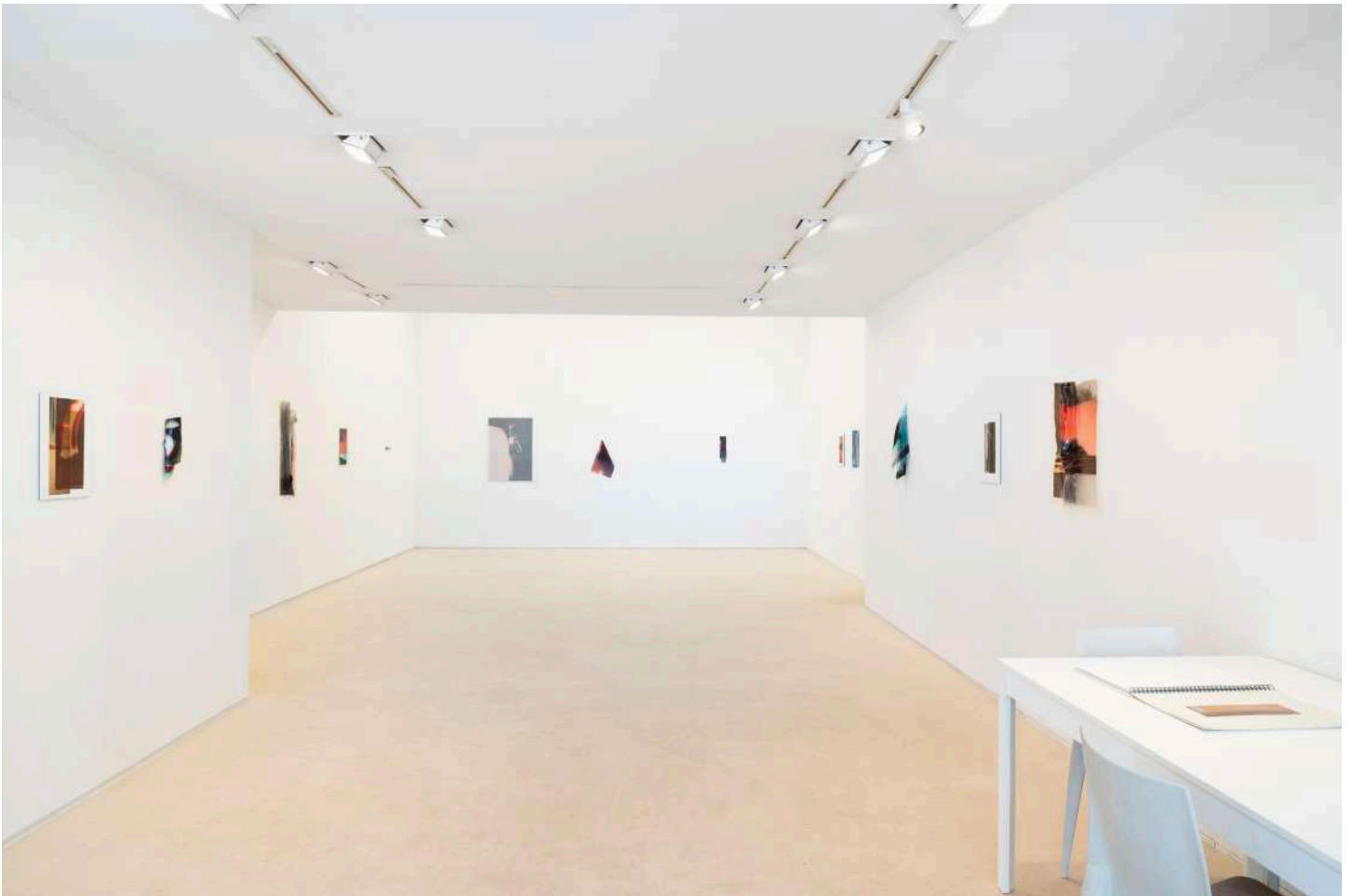
info@hannahhoffman.la  
+1.213.263.9681

## HANNAH HOFFMAN

REY AKDOGAN

*Subtractions* (March 31 – May 7, 2023)

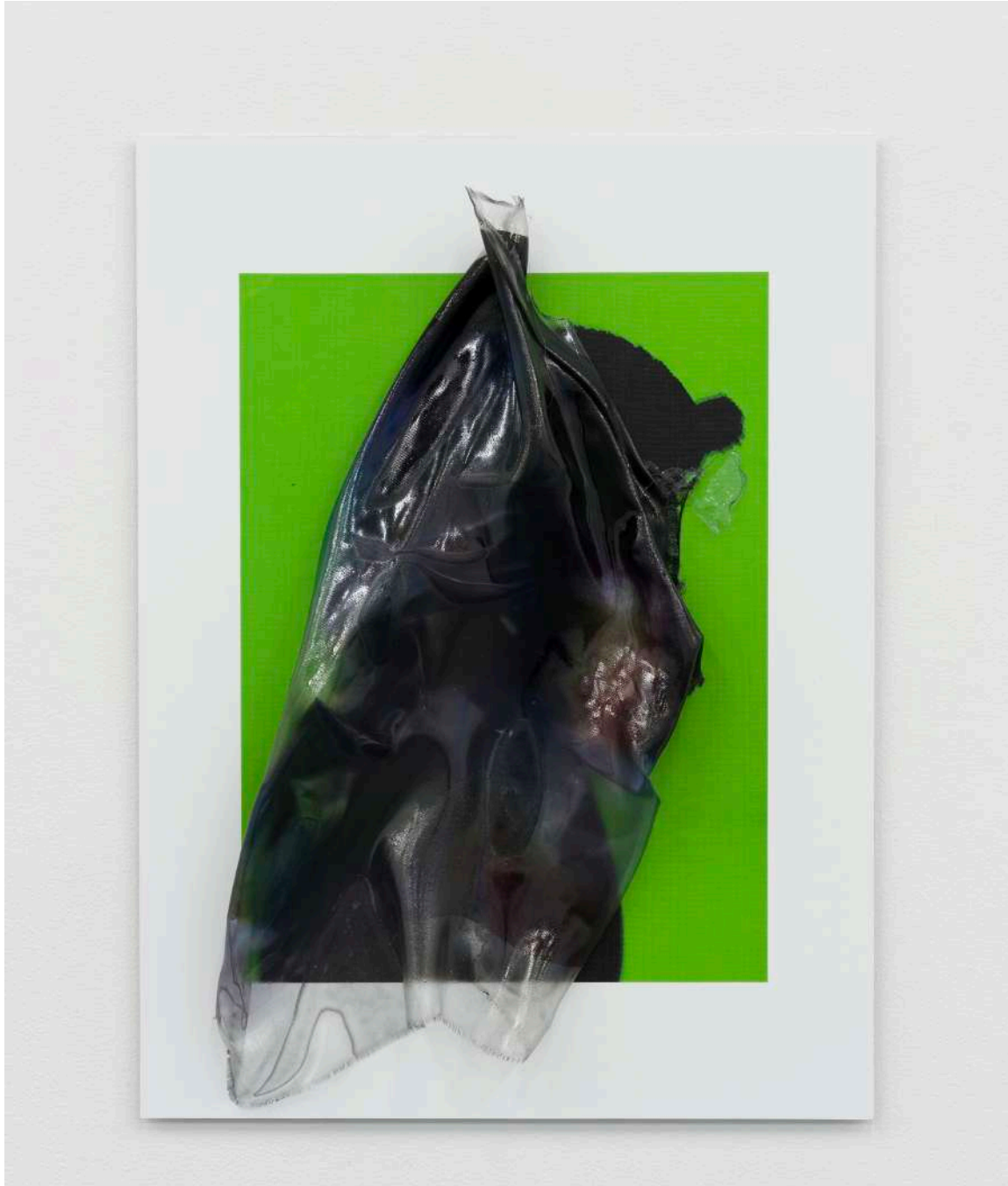
Miguel Abreu Gallery, New York, USA





Rey Akdogan, *Subtraction #41*, 2023

Fiberglass, acrylic, resin, Dibond  
23 5/8 x 18 1/8 x 5-inches (60 x 46 x 12.7cm)









Rey Akdogan, *Subtraction* #38, 2023

Print on paper, fiberglass, acrylic, archival varnish,  
resin, Dibond

16 x 12 1/4 inches (40.5 x 31 cm)

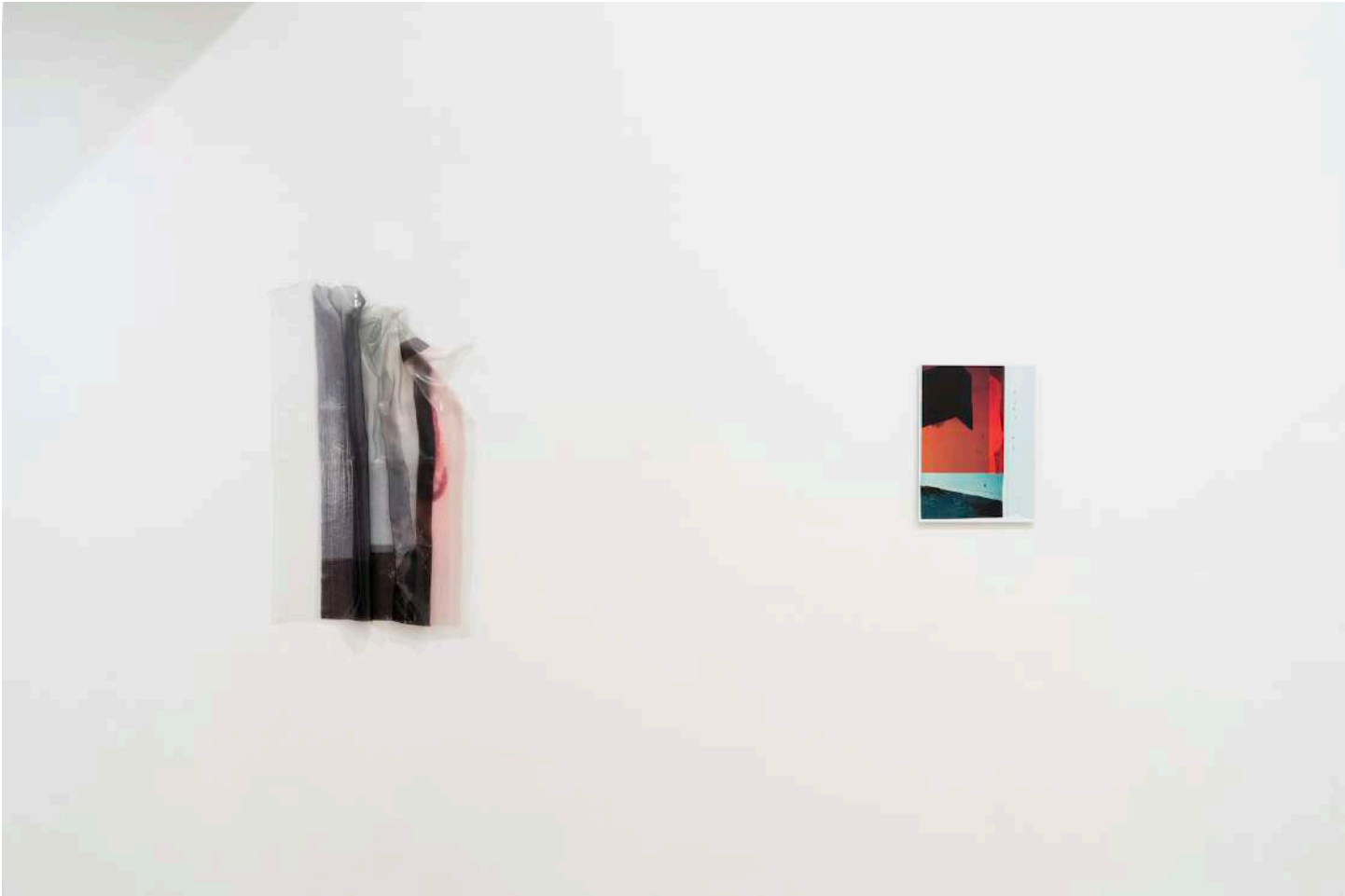


Rey Akdogan, *Subtraction* #34, 2023

Print on paper, acrylic, archival varnish, resin  
12 3/8 x 1 1/8 x 1 3/4 inches (31.5 x 3 x 4.5cm)





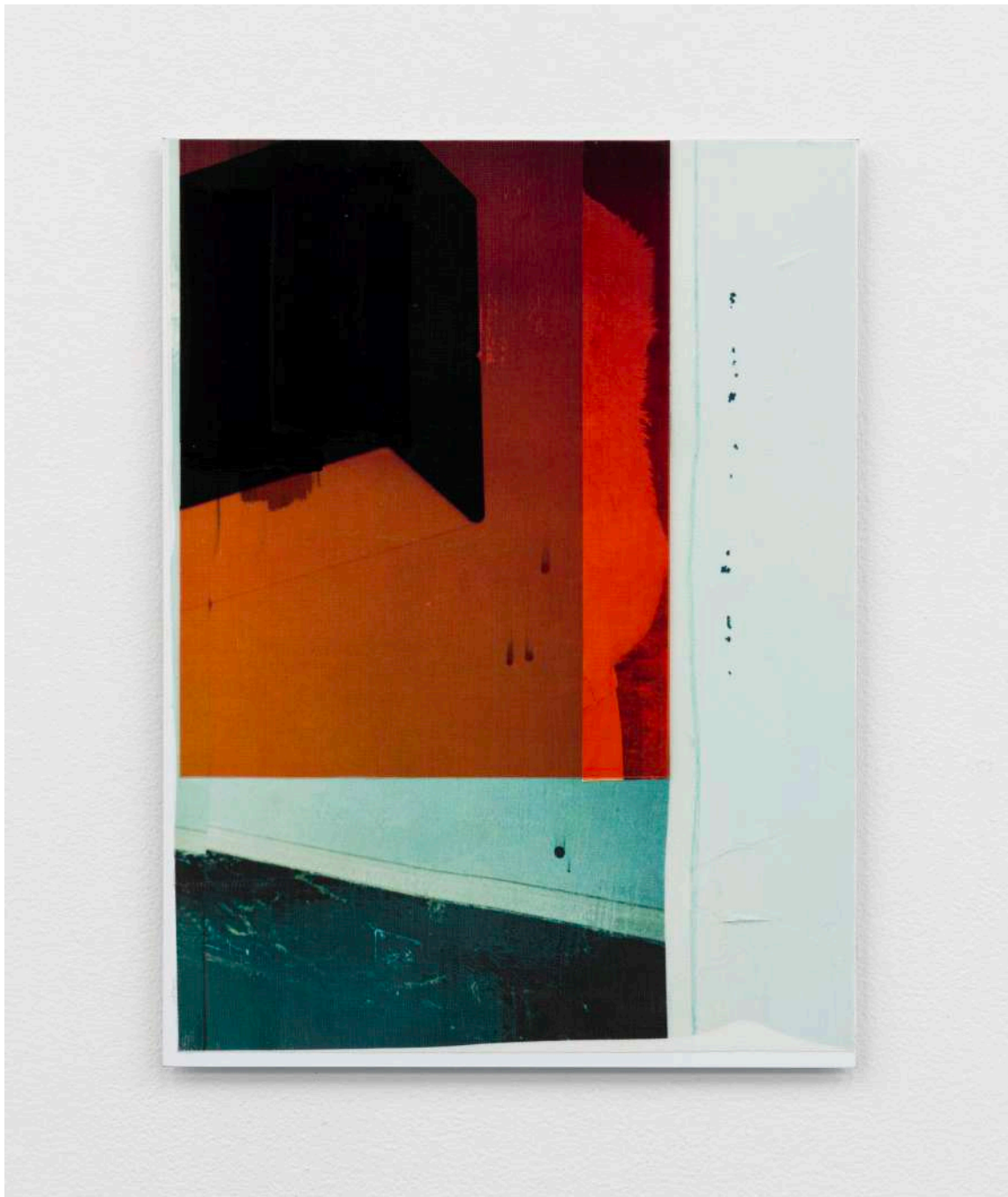




Rey Akdogan, *Subtraction* #50, 2023

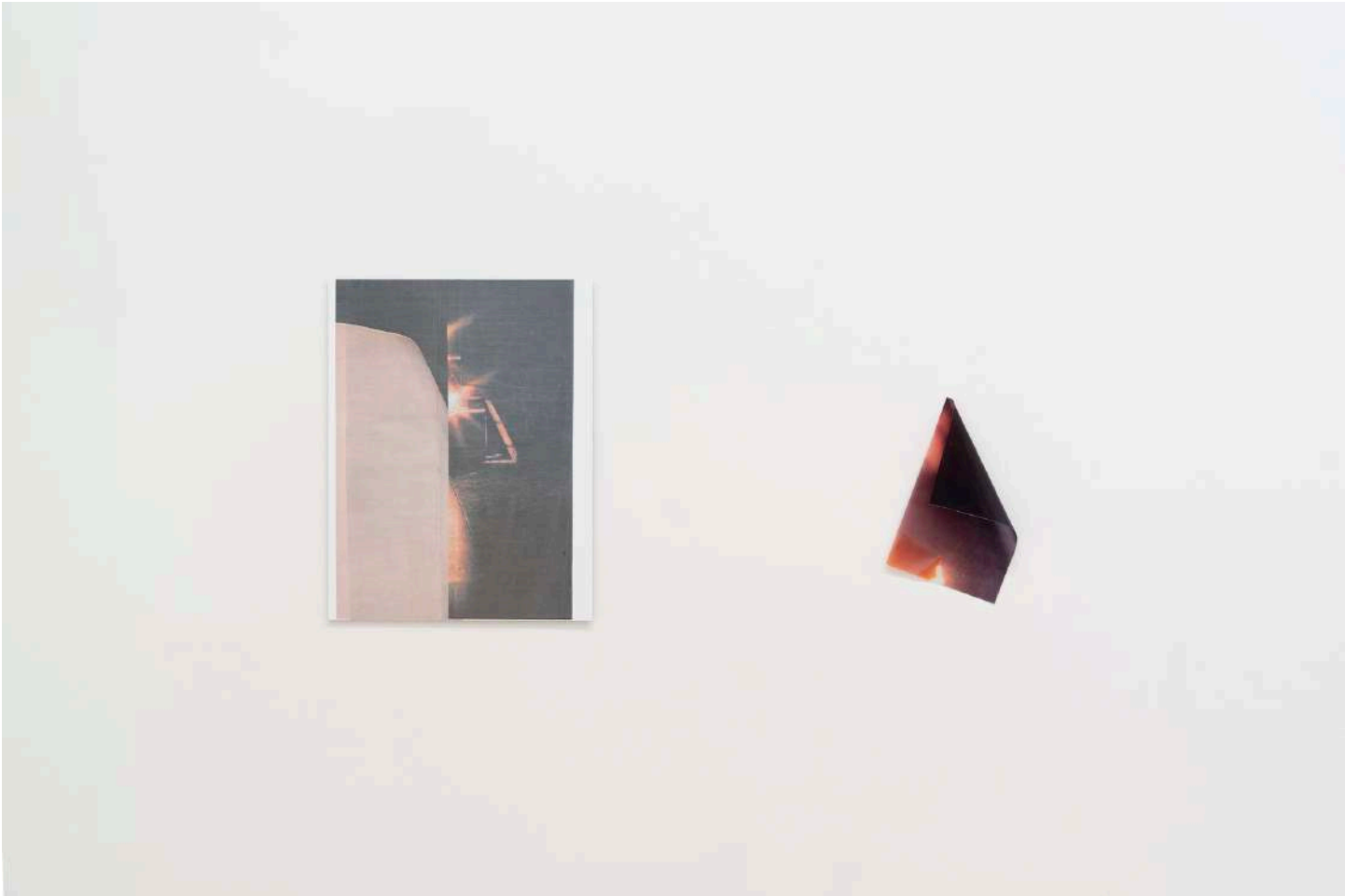
Print on paper, fiberglass, acrylic, archival varnish,  
resin, Dibond

16 x 12 1/4 inches (40.5 x 31 cm)



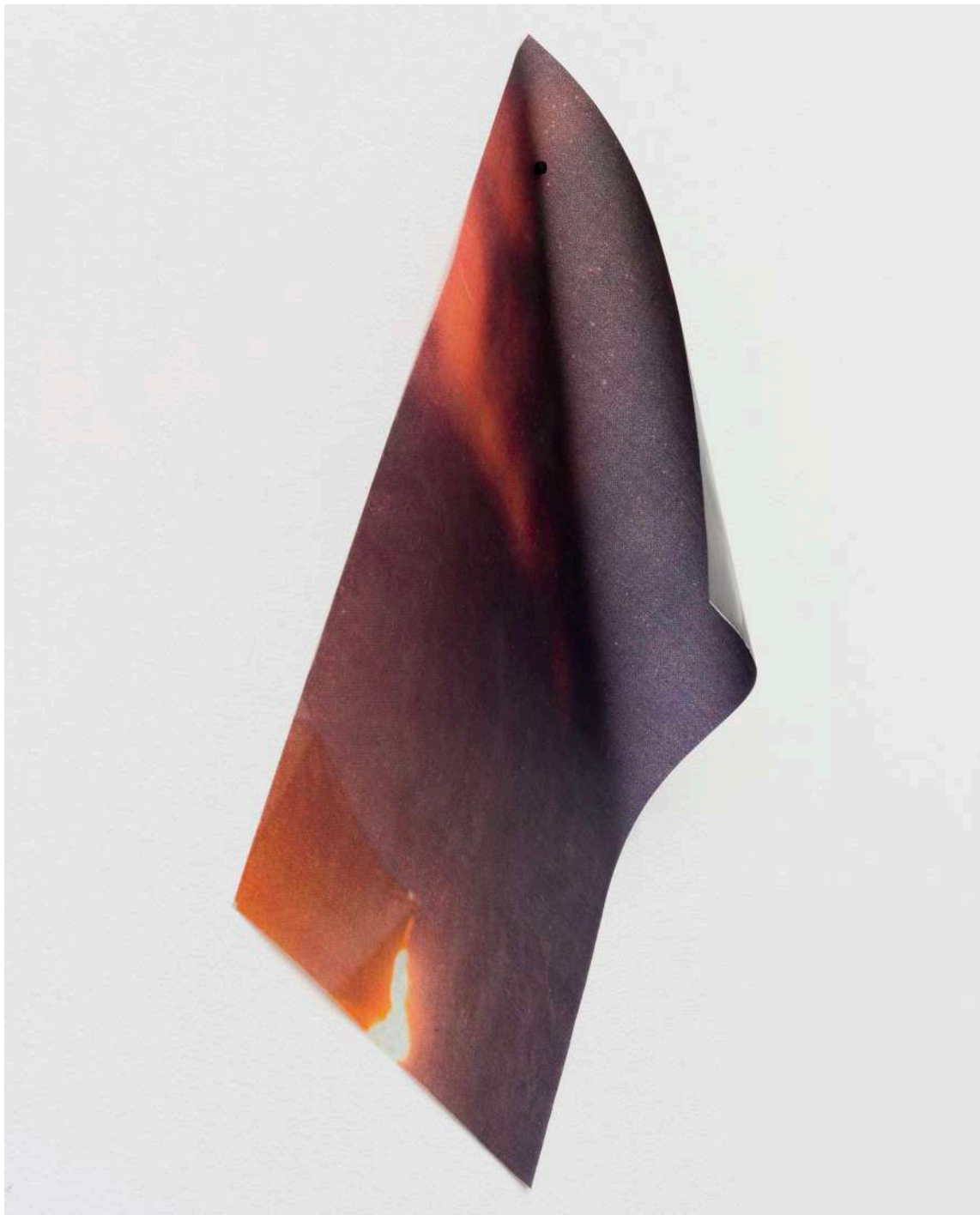






Rey Akdogan, *Subtraction #40*, 2023

Fiberglass, acrylic, resin  
21 5/8 x 13 inches (55x33cm)







Rey Akdogan, *Subtraction* #51, 2023

Print on paper, fiberglass, acrylic, archival varnish,  
resin, Dibond  
16 x 12 1/4 inches (40.5 x 31 cm)











Rey Akdogan, *Subtraction #44*, 2023

Fiberglass, acrylic, resin  
25 5/8 x 20 7/8 x 4 inches (65 x 53 x 10cm)



info@hannahhoffman.la  
+1.213.263.9681

## HANNAH HOFFMAN

REY AKDOGAN

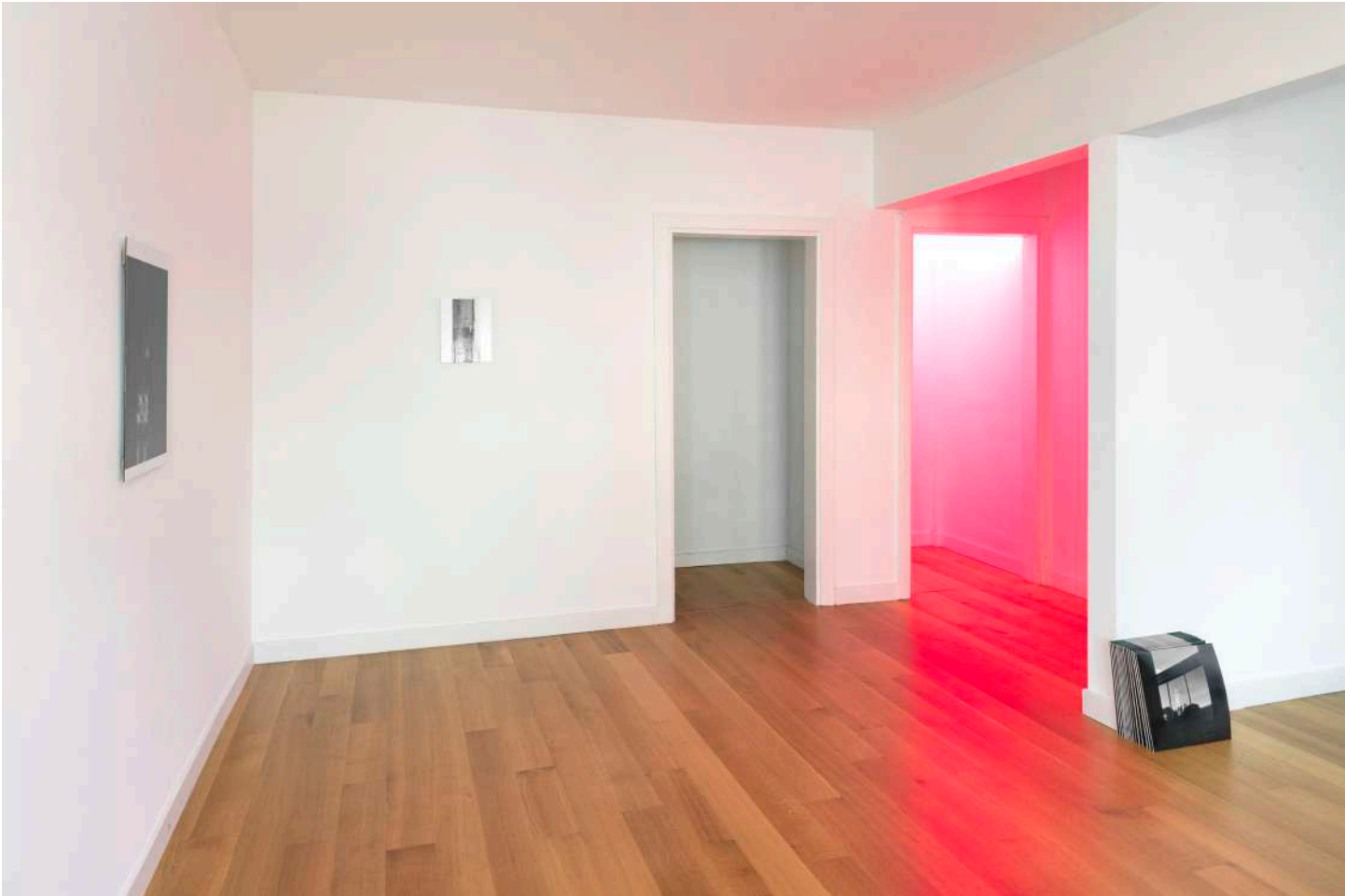
*Lost Record* (October 20 – December 3, 2022)

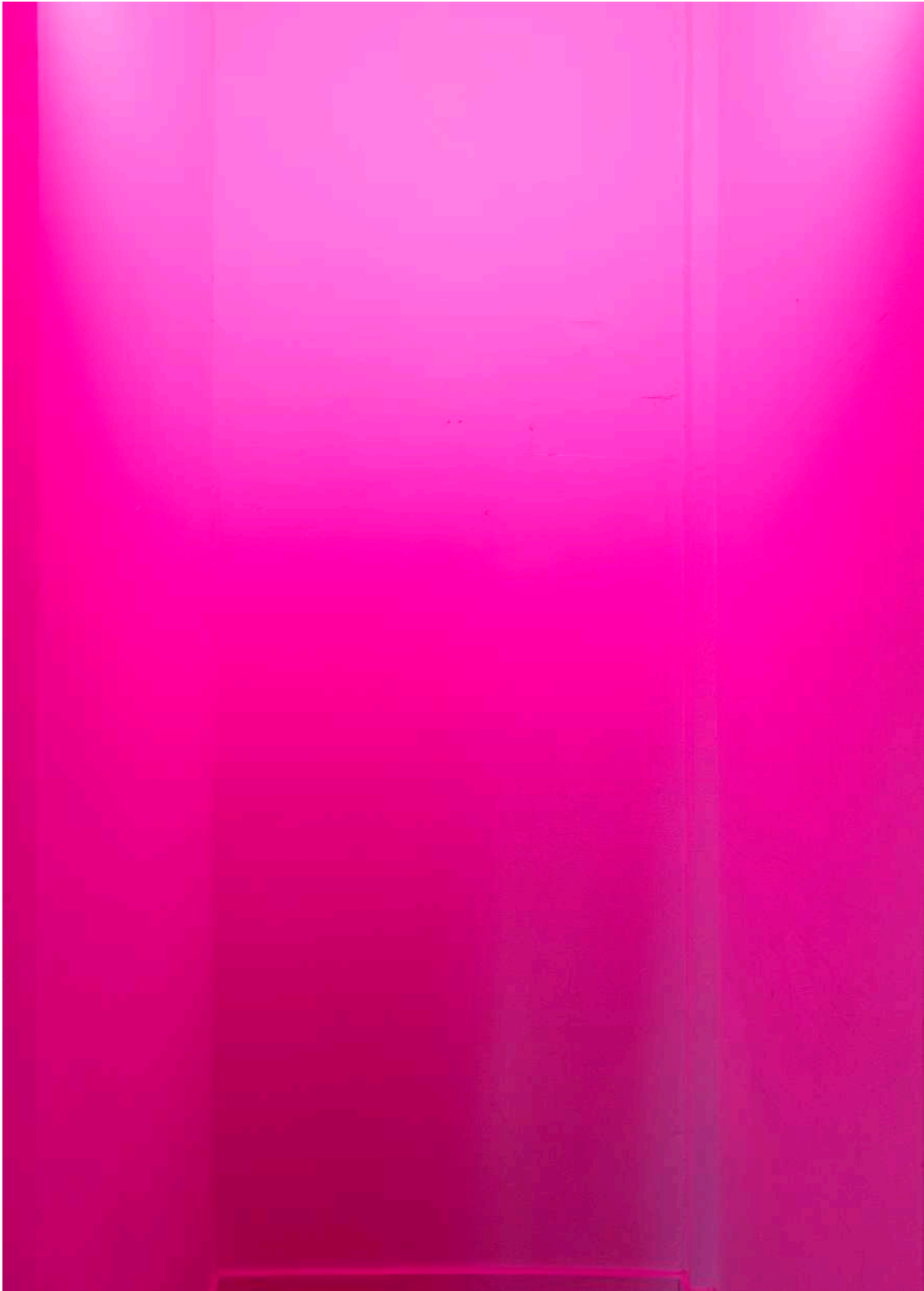
Commercial Street, Los Angeles, CA, USA















Rey Akdogan, *Lost Record*, 2022

Print on card stock  
12 x 12 inches (30.48 x 30.48 cm)



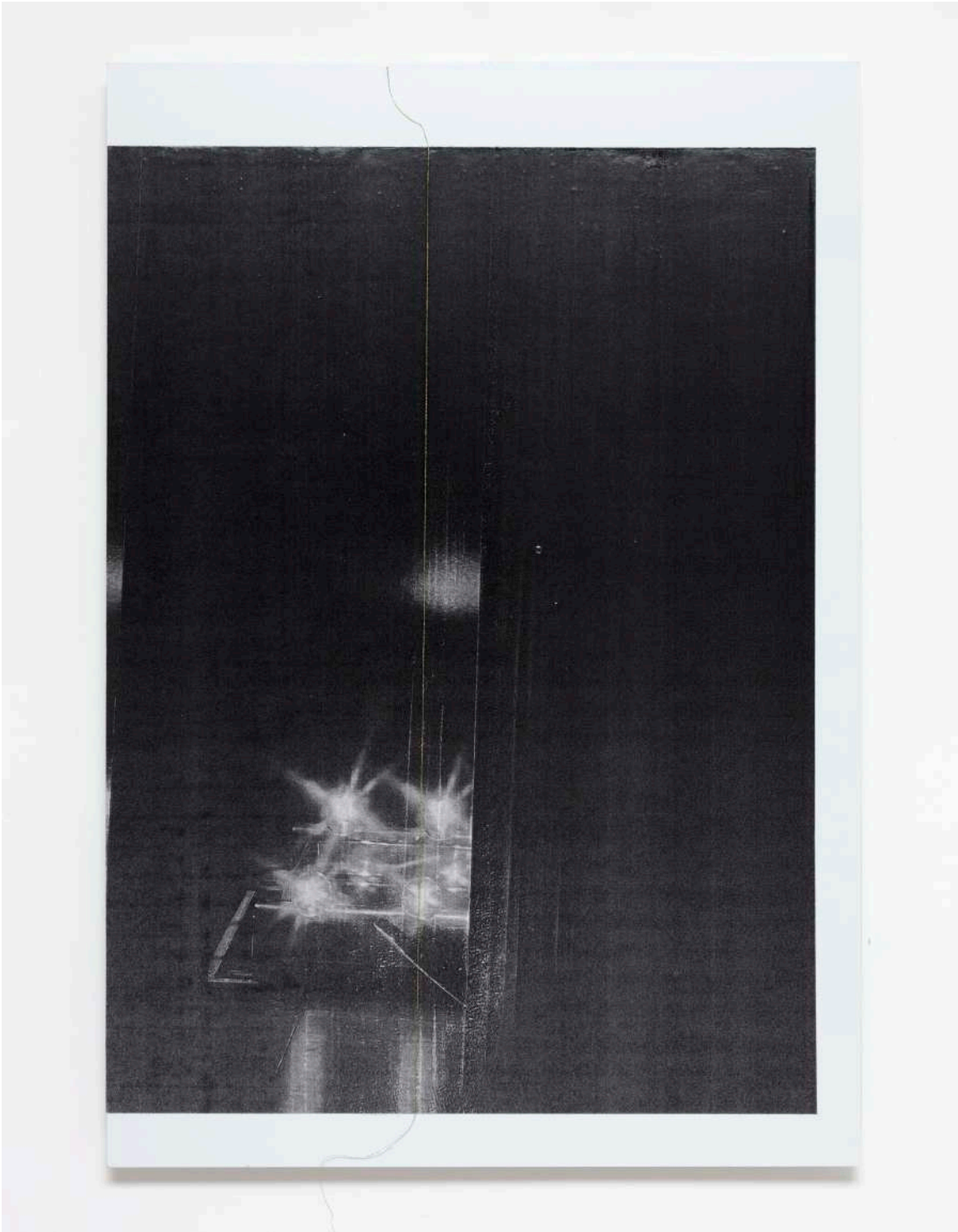






Rey Akdogan, *Subtraction #26*, 2022

Print on paper, acrylic, archival varnish on Dibond  
15 x 22 inches (38.1 x 55.88 cm)



info@hannahhoffman.la  
+1.213.263.9681

## HANNAH HOFFMAN

REY AKDOGAN

*Subtractions* (November 6, 2021 – February 5, 2022)

Galerie Anke Schmidt, Cologne, Germany







Rey Akdogan, *Subtraction #03*, 2021

Printed paper, acrylic, archival varnish on Dibond  
16 x 12 inches (40.6 x 30.5 cm)



Rey Akdogan, *Subtraction #11*, 2021

Printed paper, acrylic, archival varnish on Dibond  
16 x 12 inches (40.6 x 30.5 cm)









Rey Akdogan, *Subtraction #22*, 2021

Epoxy fiberglass, photocopy and print on paper, acrylic,  
archival varnish

47 x 31 inches (119 x 79 cm)







Rey Akdogan, *Bastard Amber*, 2023

Lighting gel, fluorescent light  
77.16 x 48 x 3.5 inches (196 x 122 x 9 cm)







Rey Akdogan, *Subtraction #24*, 2021

Photocopy and print on paper, acrylic, archival varnish, metal  
36 x 27 x 20 inches (91.5 x 68.5 x 51 cm)



REY AKDOGAN

*14th Cuenca Biennial: Living Structures - Art As A Plural Experience*

(November 23, 2018 – February 3, 2019)

Cuenca, Ecuador











info@hannahhoffman.la  
+1.213.263.9681

## HANNAH HOFFMAN

REY AKDOGAN

(July 8, 2017 - August 6, 2017)

Hannah Hoffman Gallery, Los Angeles, CA, USA





Rey Akdogan, CRA 200F, [RAL 9005, RAL 9005, RAL 9005] solid #18, 2017

Powder coated aluminum, three parts  
5.5 x 48 x 1.5 inches (14 x 121.9 x 3.8 cm), 5.5 x 96 x 1.5  
inches (14 x 243.8 x 3.8 cm), 5.5 x 24 x 1.5 inches (14 x  
61 x 3.8 cm)



Rey Akdogan, *CRA 200F*, [RAL 9005, RAL 9005, RAL 9005] solid #18, 2017

Powder coated aluminum, three parts  
5.5 x 48 x 1.5 inches (14 x 121.9 x 3.8 cm), 5.5 x 96 x 1.5  
inches (14 x 243.8 x 3.8 cm), 5.5 x 24 x 1.5 inches (14 x  
61 x 3.8 cm)



Rey Akdogan, CRA 200F, [RAL 9005, RAL 9005, RAL 9005] solid #18, 2017

Powder coated aluminum, three parts  
5.5 x 48 x 1.5 inches (14 x 121.9 x 3.8 cm), 5.5 x 96 x 1.5  
inches (14 x 243.8 x 3.8 cm), 5.5 x 24 x 1.5 inches (14 x  
61 x 3.8 cm)







Rey Akdogan, *HHG [north wall\_001Brilliant- FPE]*, 2017

Paint  
380.945 sq ft



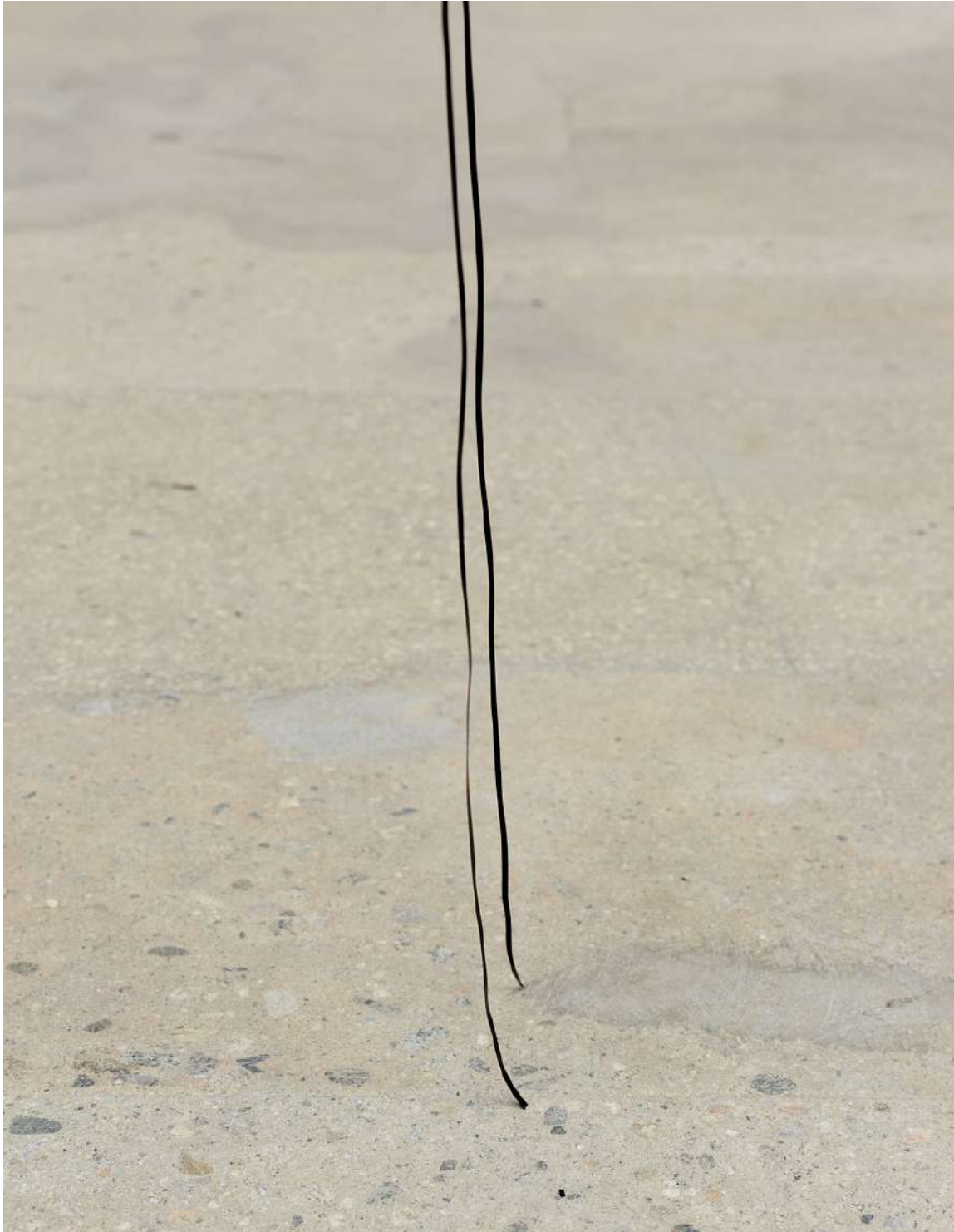
Rey Akdogan, *Slit drape [rosco -solid black]*, 2017

Vinyl  
138 x 3/8 inches (350.5 x 1 cm) (dimensions variable)



Rey Akdogan, *Slit drape [rosco -solid black]*, 2017

Vinyl  
138 x 3/8 inches (350.5 x 1 cm) (dimensions variable)





Rey Akdogan, *CRA 200F, CRA 200F, CRA 800F, [RAL 9005, RAL 9005] solid #20, 2017*

Powder coated aluminum, three parts  
5.5 x 84 x 1.5 inches (14 x 213.4 x 3.8 cm), 5.5 x 36 x 1.5  
inches (14 x 91.4 x 3.8 cm), 8 x 36 x 1.5 inches (20.3 x  
91.4 x 3.8 cm)

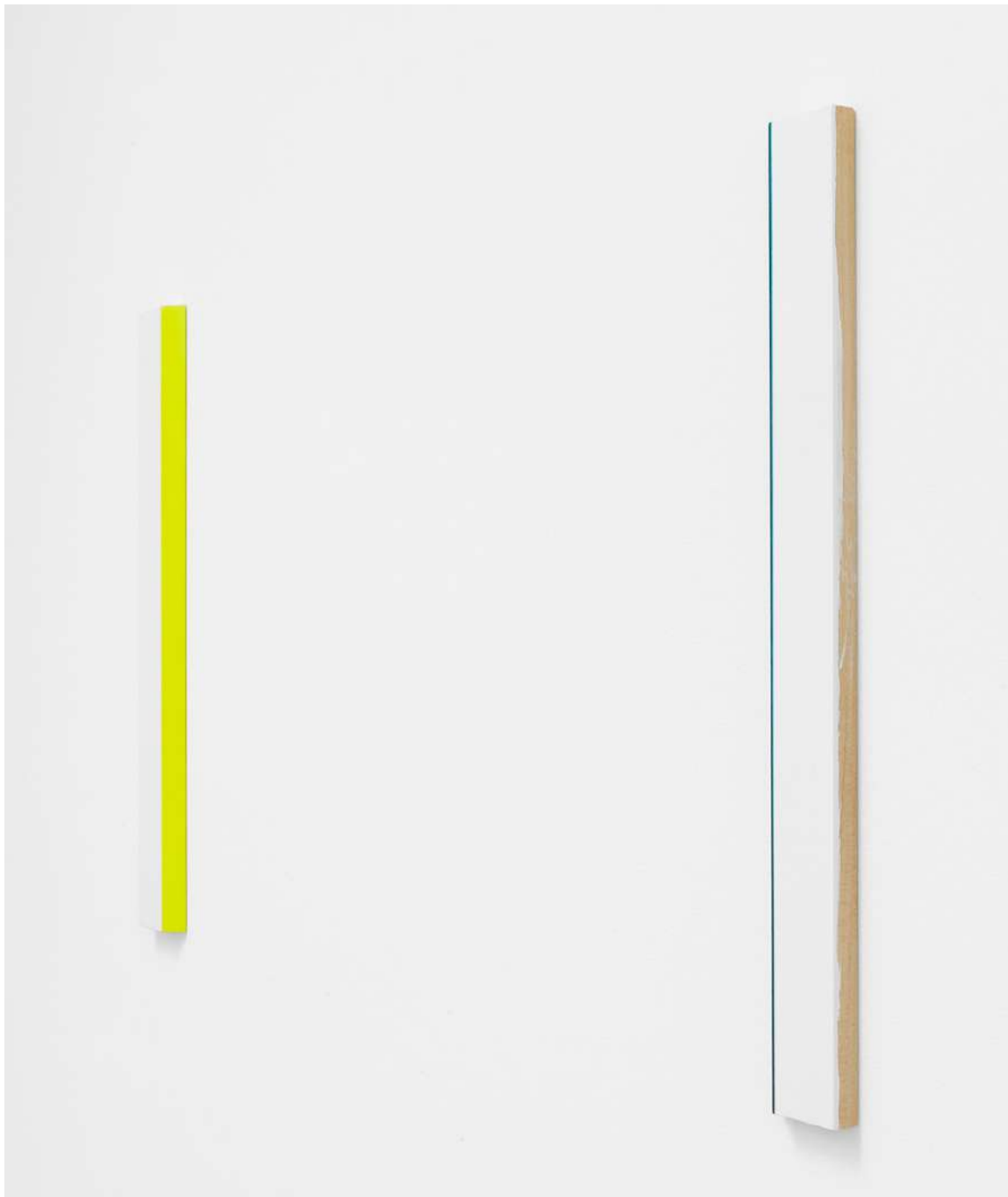






Rey Akdogan, *Faction #19*, 2017

Acrylic paint on wooden French cleat  
24 x 42 1/4 x 3/4 inches (61 x 107.3 x 1.9 cm)



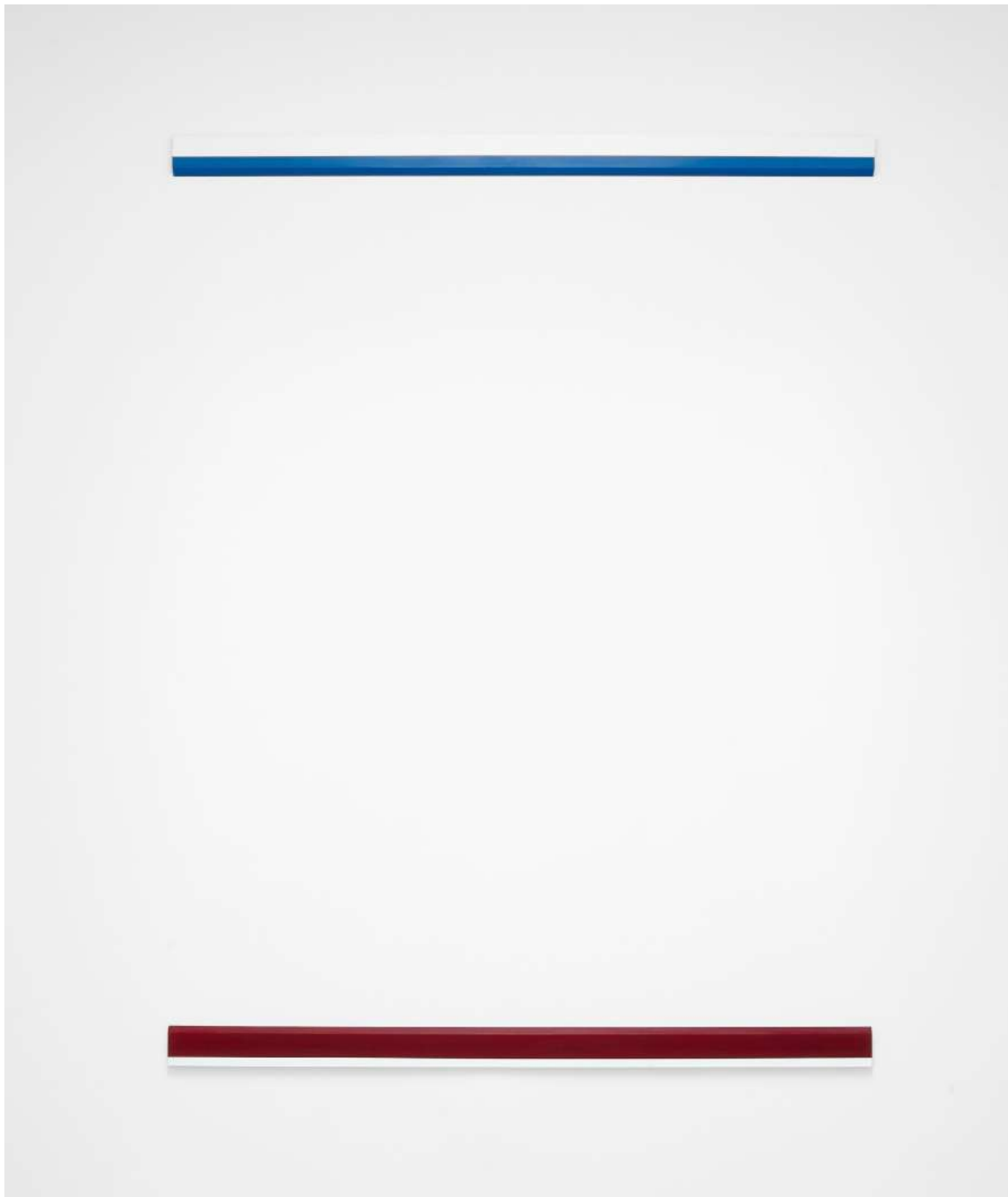






Rey Akdogan, *Faction #23*, 2017

Acrylic paint on wooden French cleat  
94 x 72 x 3/4 inches (238.8 x 182.9 x 1.9 cm)



Rey Akdogan, *Faction #23*, 2017

Acrylic paint on wooden French cleat  
94 x 72 x 3/4 inches (238.8 x 182.9 x 1.9 cm)



Rey Akdogan, *Faction #23*, 2017

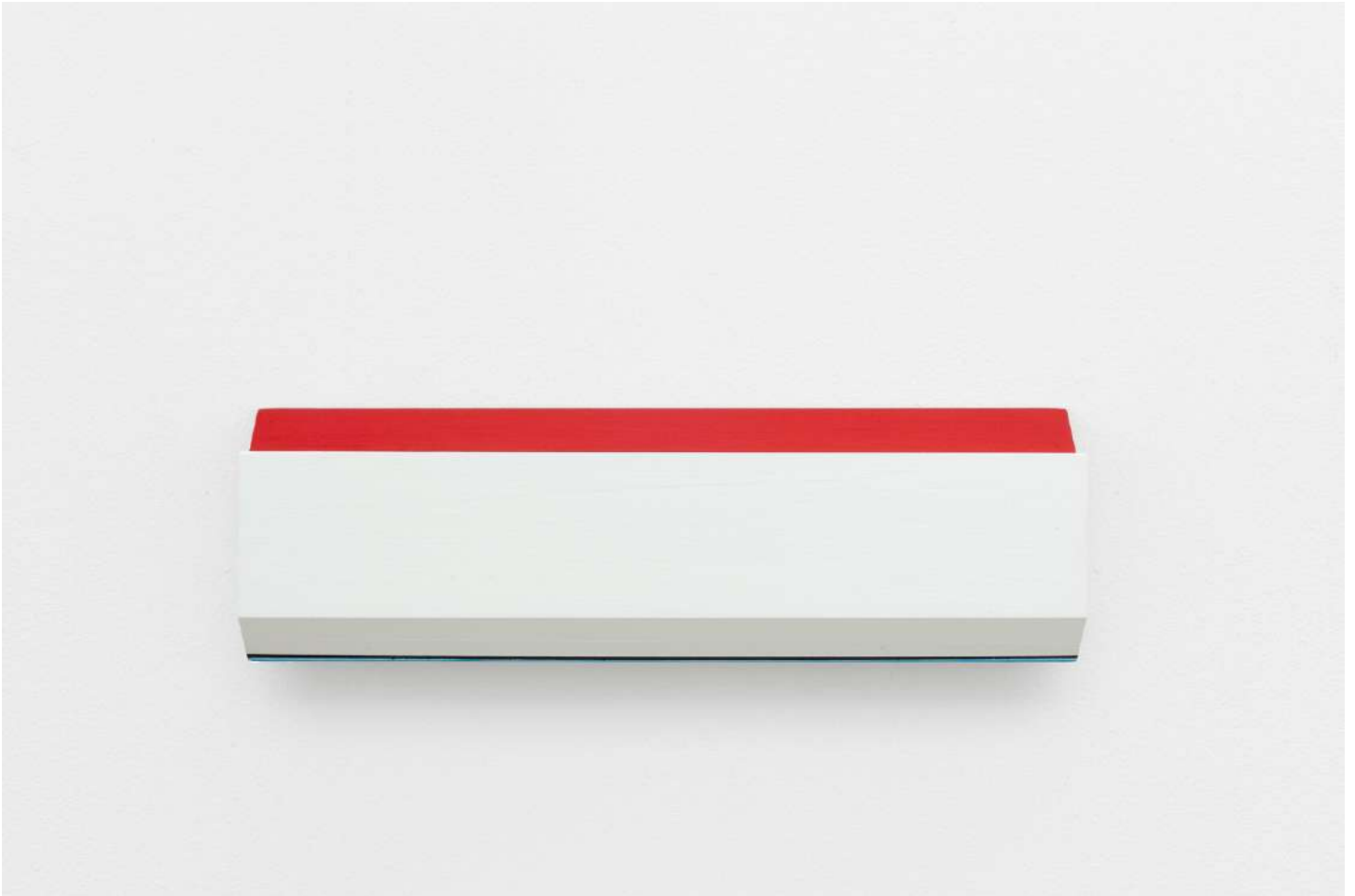
Acrylic paint on wooden French cleat  
94 x 72 x 3/4 inches (238.8 x 182.9 x 1.9 cm)





Rey Akdogan, *Faction #22*, 2017

Acrylic paint on wooden French cleat  
3 x 12 x 3/4 inches (7.6 x 30.5 x 1.9 cm)



Rey Akdogan, *Faction #22*, 2017

Acrylic paint on wooden French cleat  
3 x 12 x 3/4 inches (7.6 x 30.5 x 1.9 cm)





REY AKDOGAN  
*Crash Rail* (May 13, 2015 – June 28, 2015)  
Miguel Abreu, New York, NY, USA



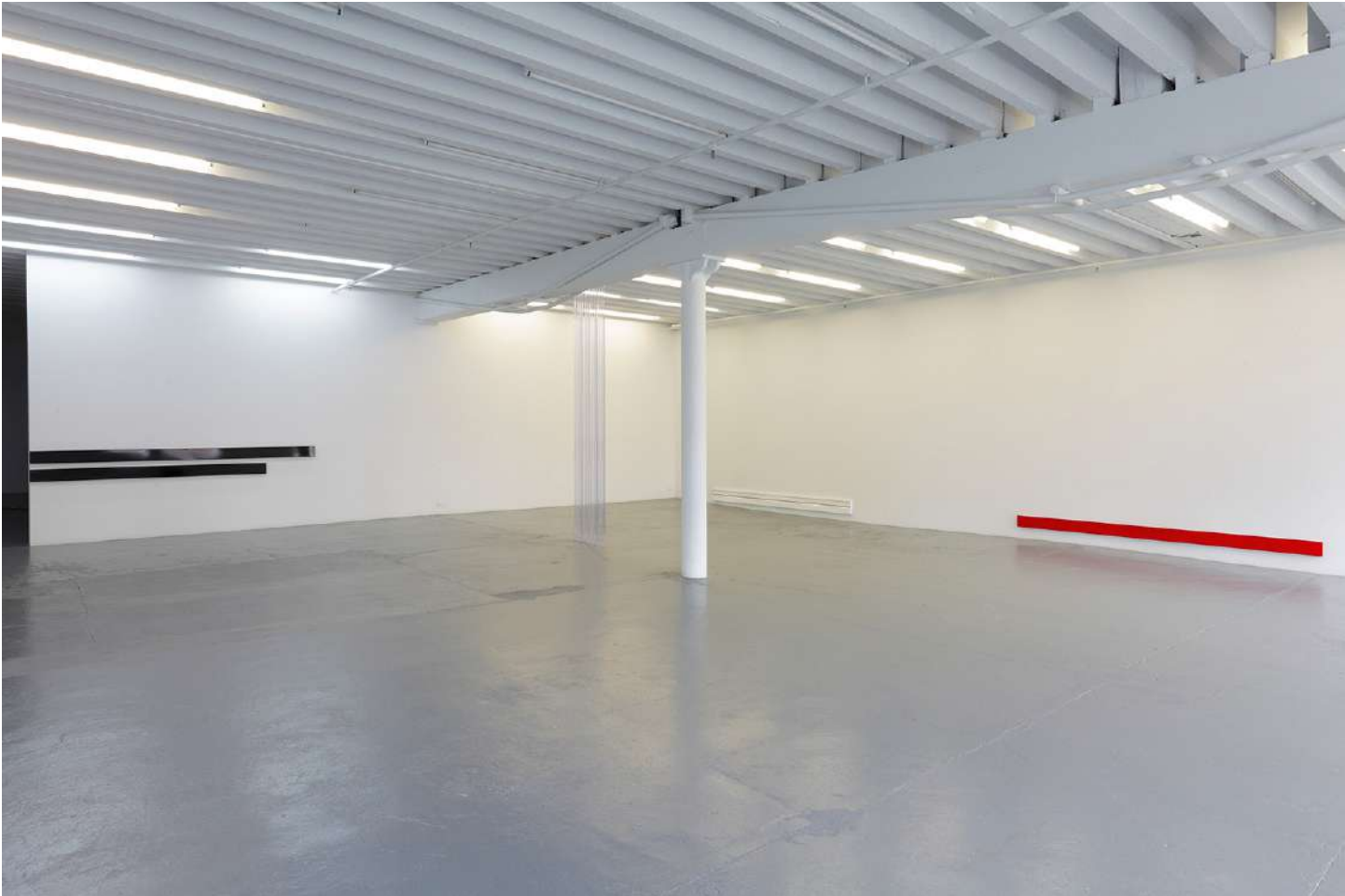
Rey Akdogan, CRA 200, [HSS 500, RAL 3020] line #3,  
2015

Powder coated aluminum  
5 1/2 x 96 1/2 x 1 1/2 inches (14x243.8x3.8cm)















Rey Akdogan, *Sequence III*, 2015

PVC vinyl, aluminum hardware  
140 x 32 x 1 inches (355.6x81.3x2.5cm)



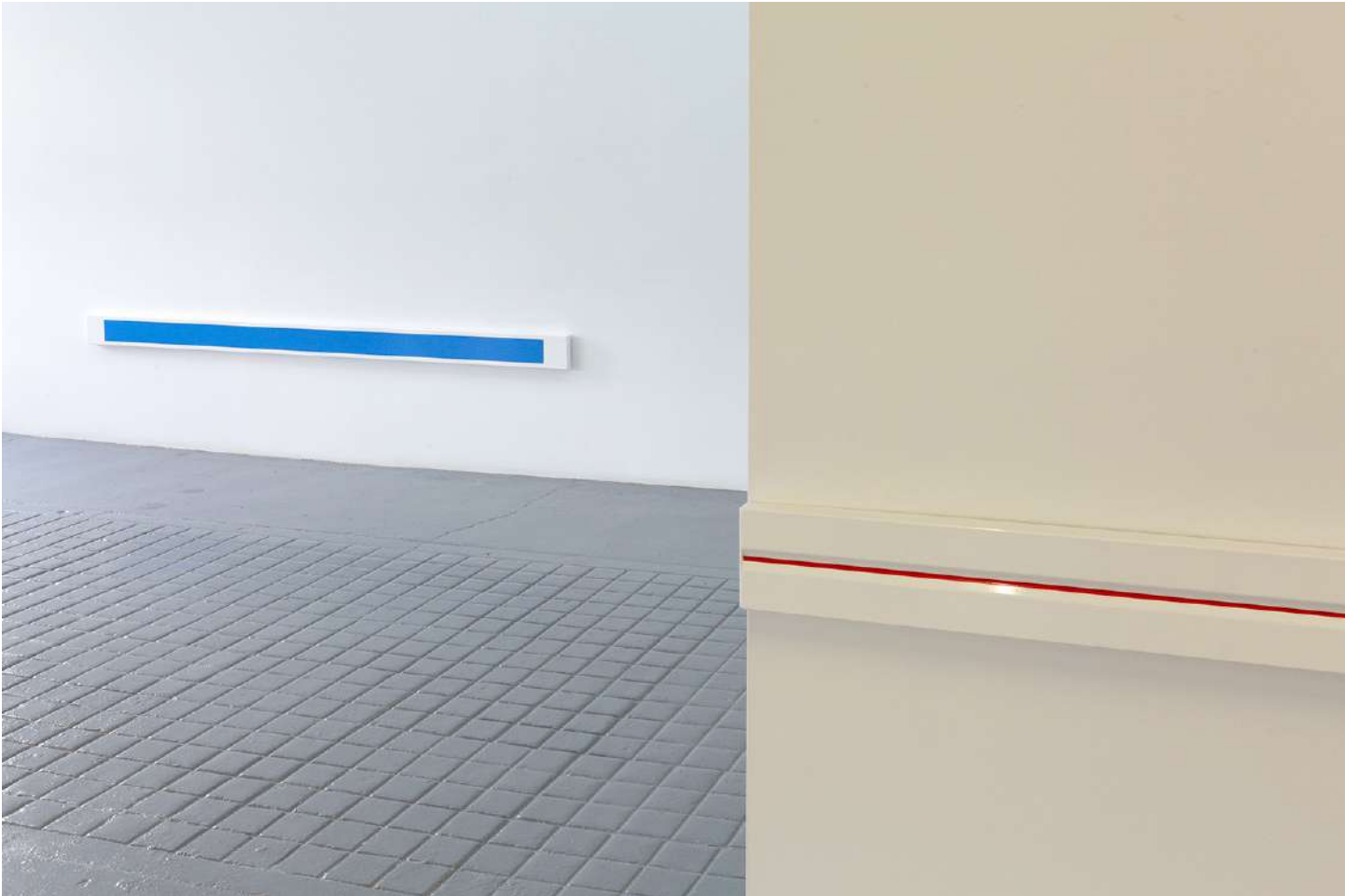


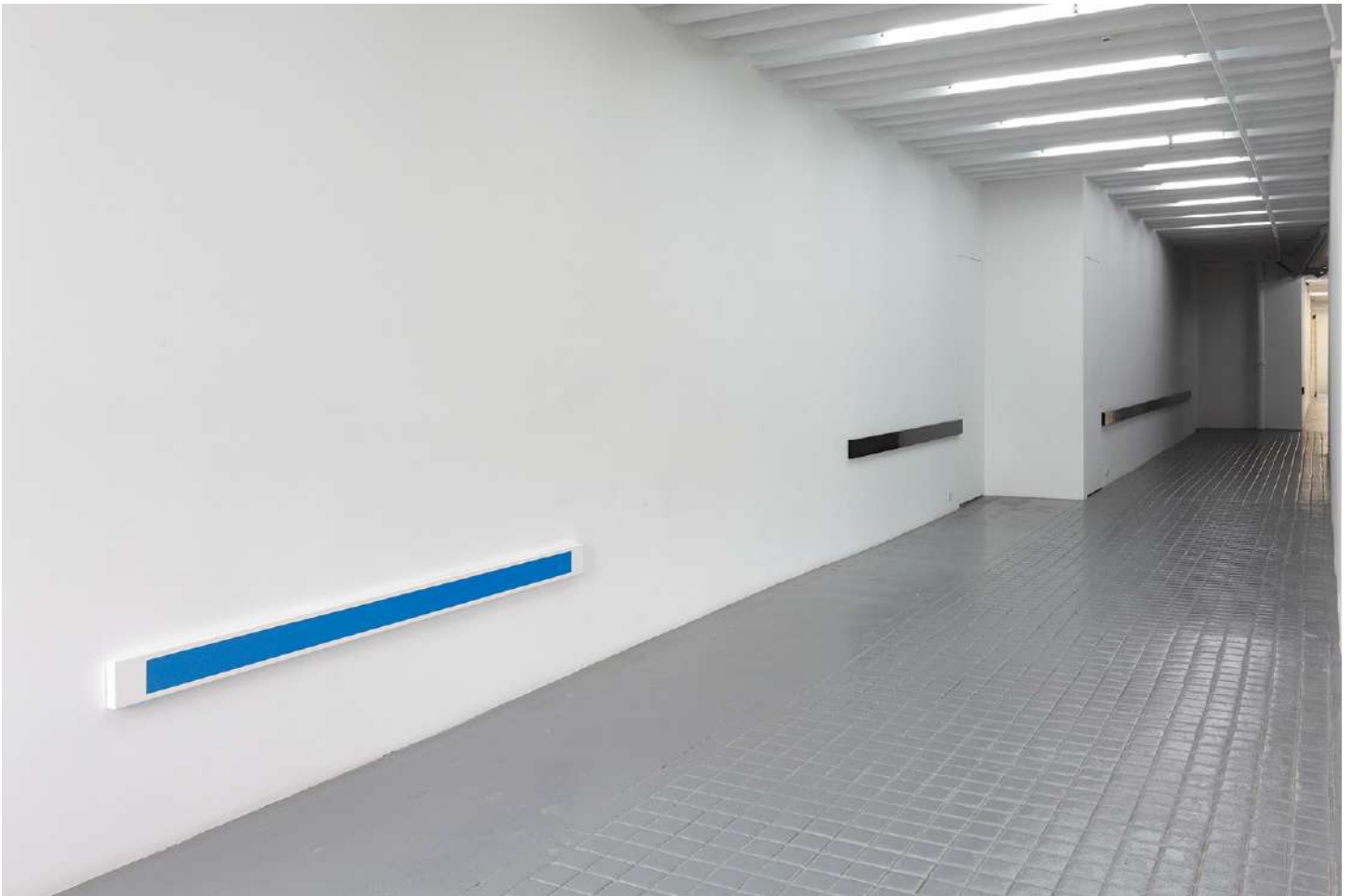
Rey Akdogan, CRA 800 F, [HSS 500, RAL 3020] line #2  
2015

Powder coated aluminum  
8 x 120 x 1 inches (20.3x304.8x3.8cm)









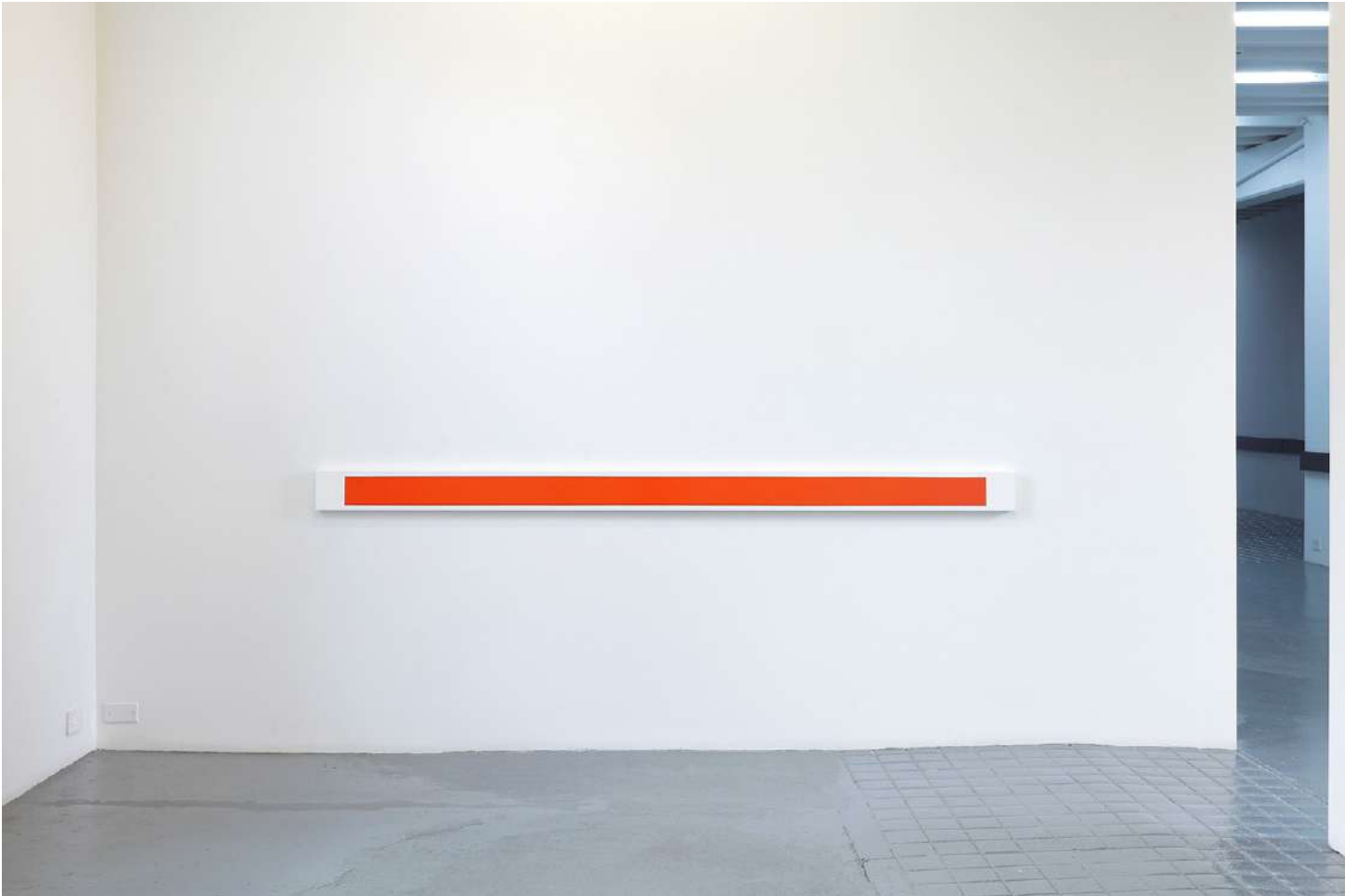
Rey Akdogan, CRA 200 F, [HSS 500, RAL 5012] band #1,  
2015

Powder coated aluminum  
5 1/2 x 96 1/2 x 1 1/2 inches (14x243.8x3.8cm)











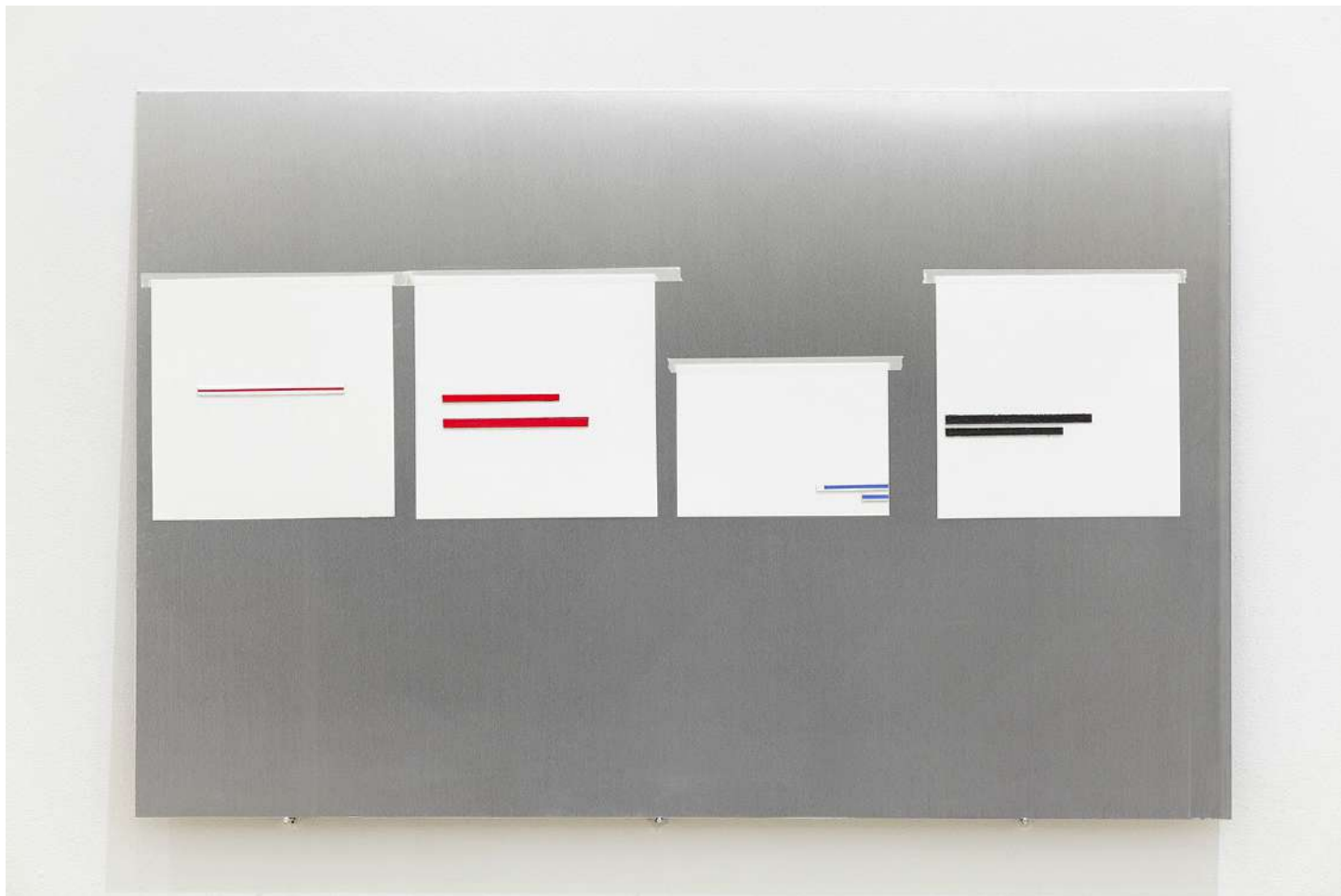




Rey Akdogan, *Swatches (1:25)* #8, #9, #10, #11, 2015

Paper, cardboard, acrylic, enamel, Nichiban tape,  
aluminum

24 x 36 inches (61 x 91.4 cm)



Rey Akdogan, *Line #T5 (HSS 500)*, 2015

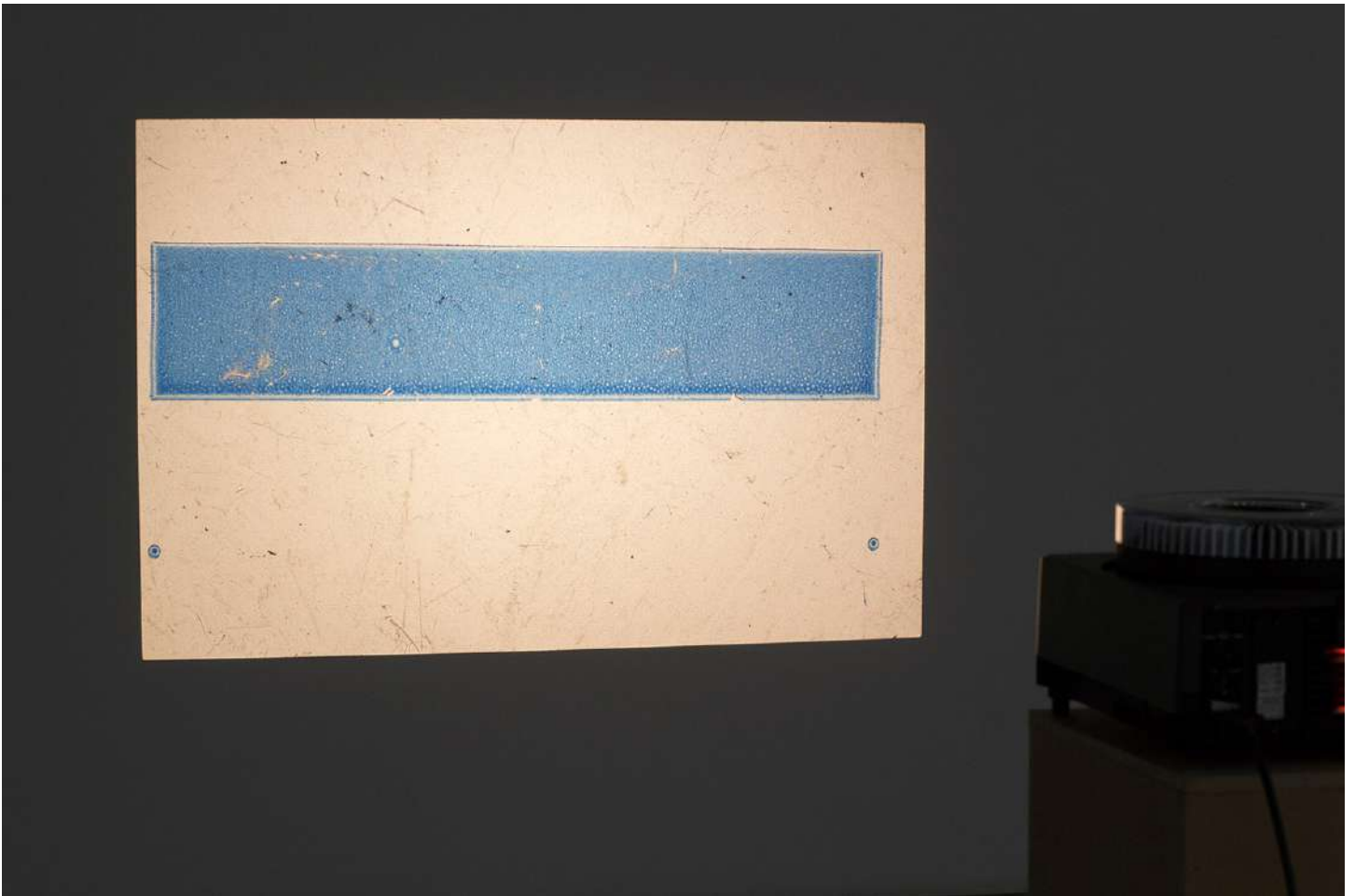
Powder coated aluminum, polyester powder coat  
masking tape  
24 x 36 inches (61 x 91.4 cm)





Rey Akdogan, *Carousel #8*, 2015

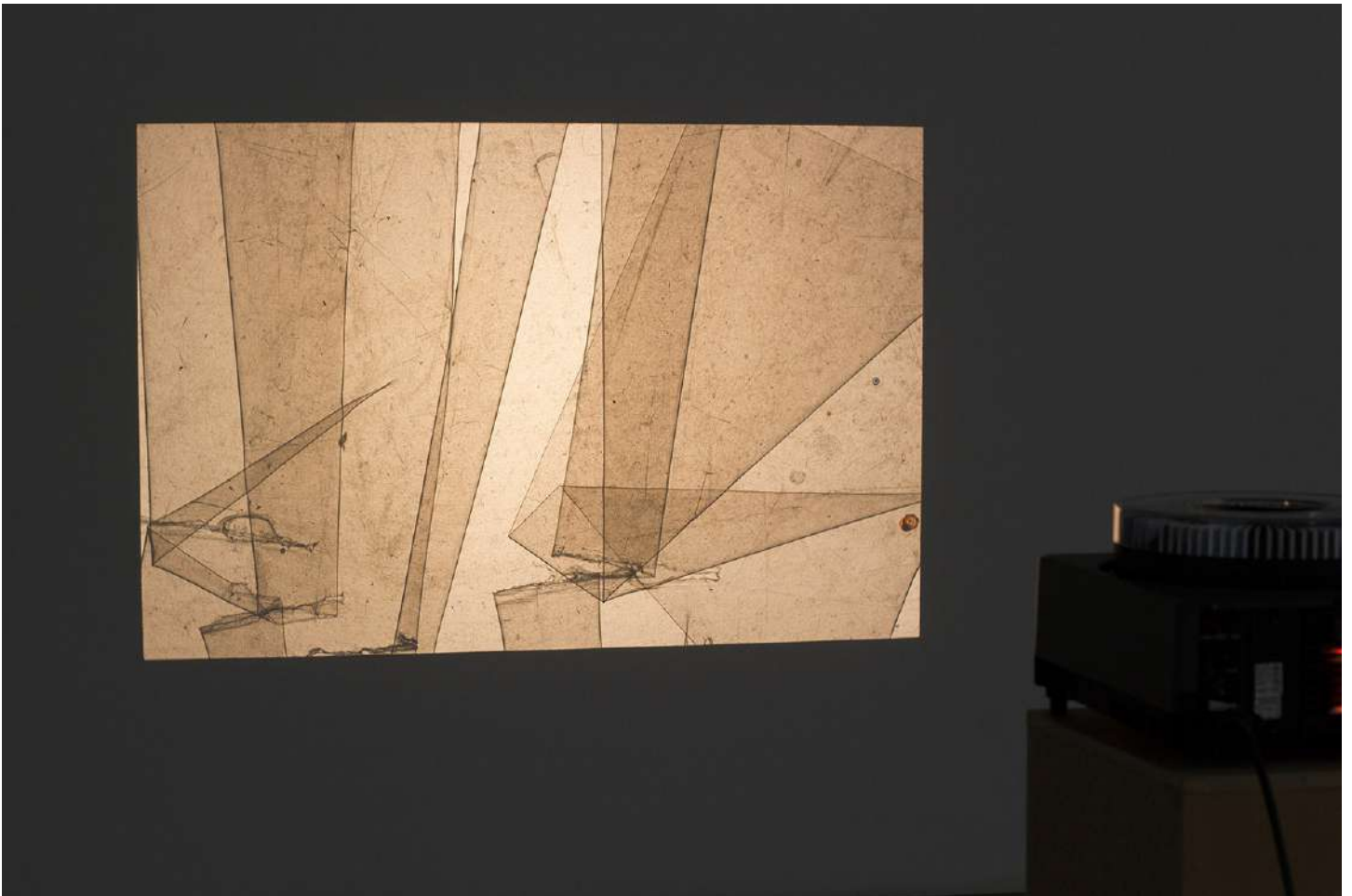
Slide projection, running time approx. 13 minute loop  
(80 slides) Lighting gels, assorted colored packaging  
material held together by slide frames  
Dimensions variable





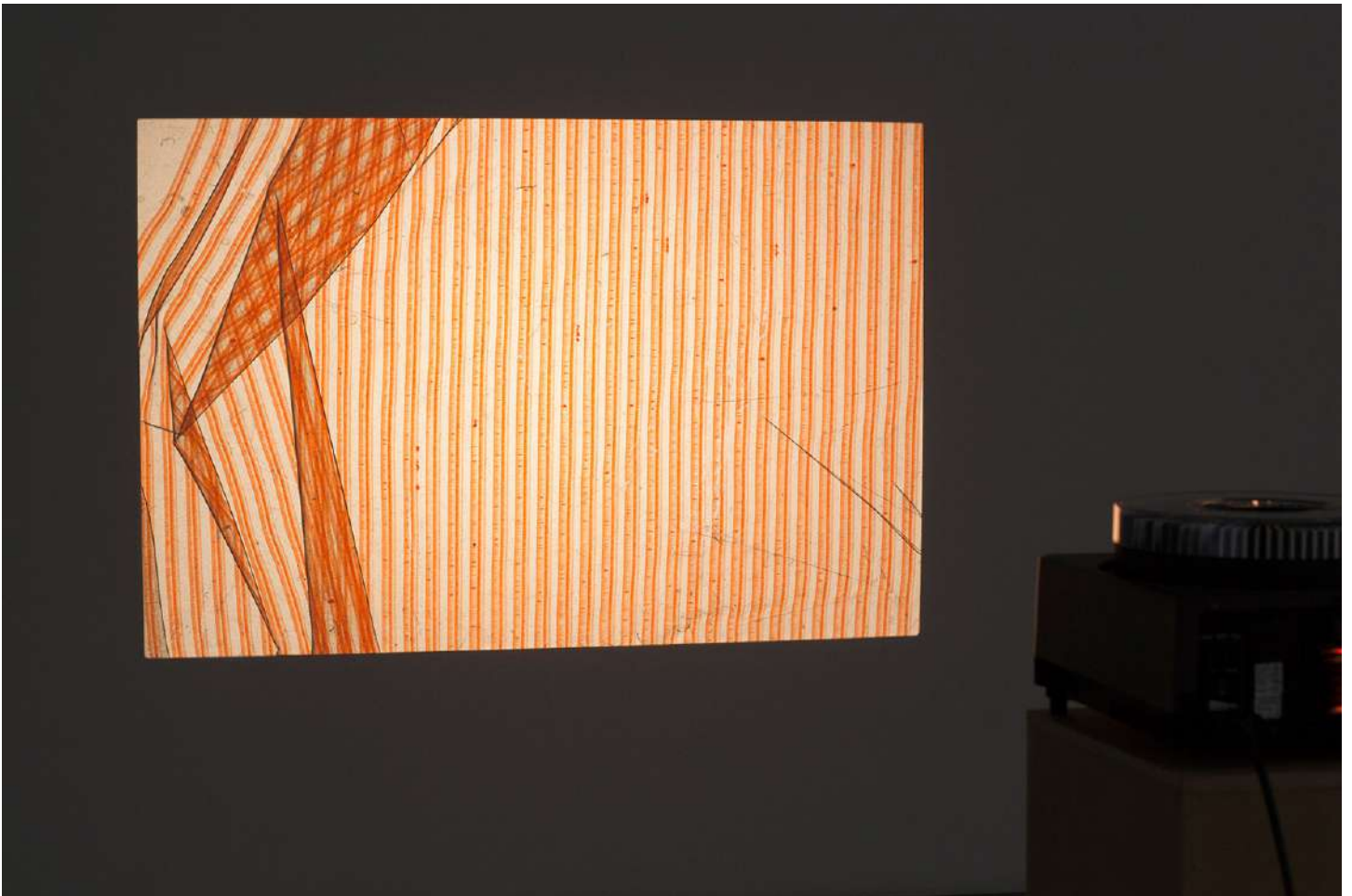
Rey Akdogan, *Carousel #8*, 2015

Slide projection, running time approx. 13 minute loop  
(80 slides) Lighting gels, assorted colored packaging  
material held together by slide frames  
Dimensions variable



Rey Akdogan, *Carousel #8*, 2015

Slide projection, running time approx. 13 minute loop  
(80 slides) Lighting gels, assorted colored packaging  
material held together by slide frames  
Dimensions variable



info@hannahhoffman.la  
+1.213.263.9681

## HANNAH HOFFMAN

REY AKDOGAN

(May 3, 2014 - June 21, 2014)

Hannah Hoffman Gallery, Los Angeles, CA, USA

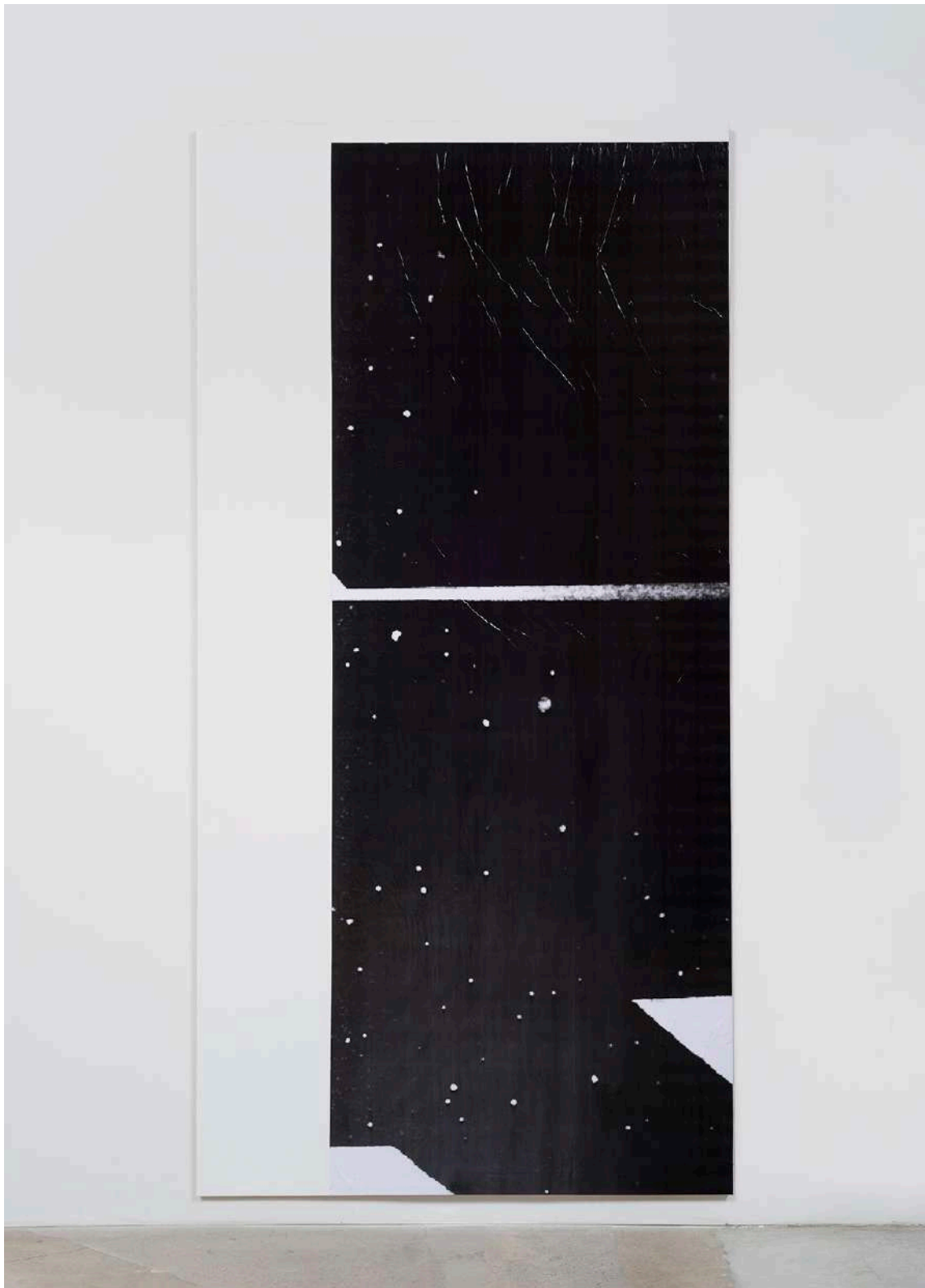






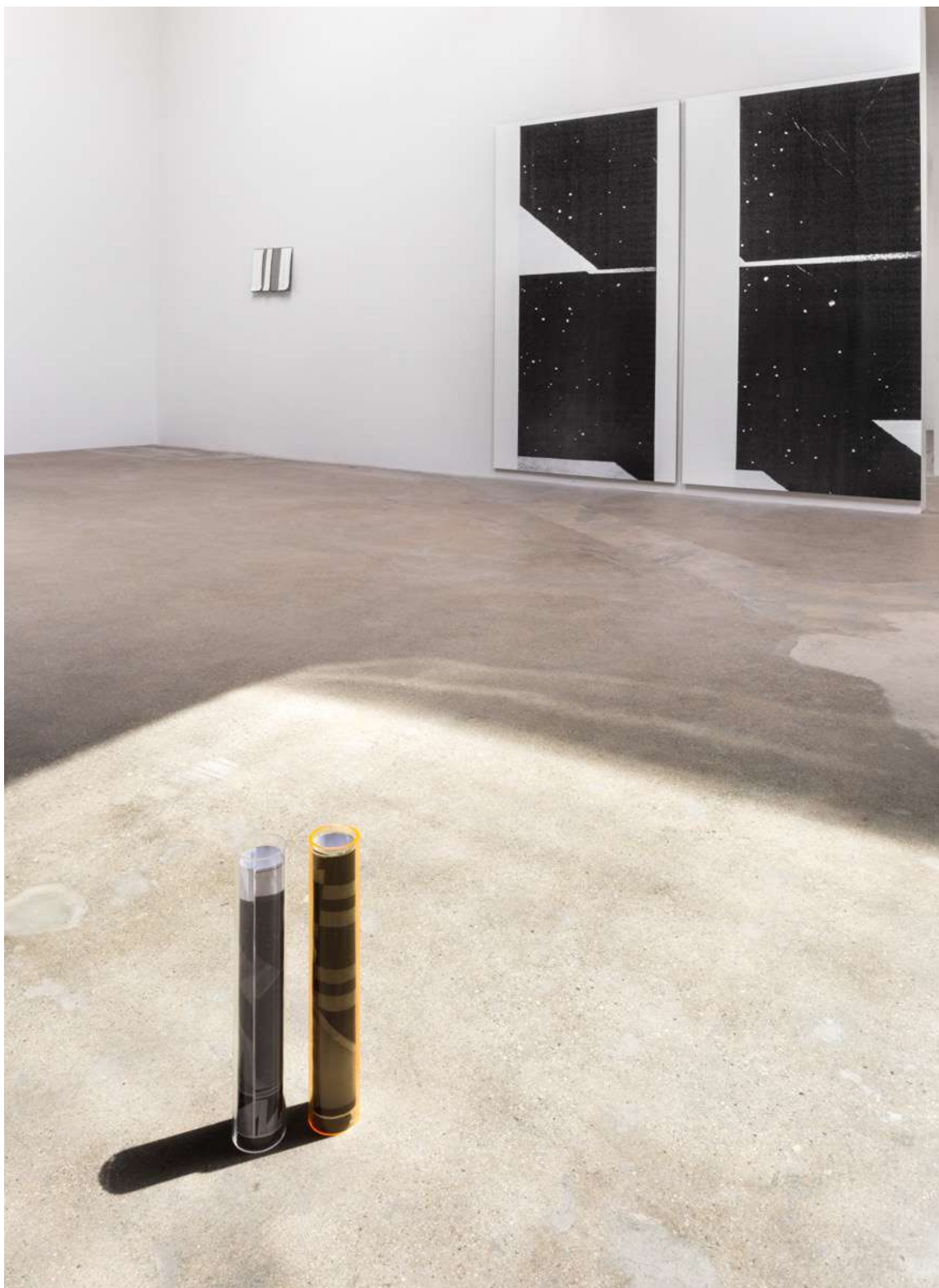
Rey Akdogan, *Sequence BW I (GF)*, 2014

Enlarged Xerox, acrylic paint, MDO board  
96 x 48 inches (243.8 x 121.9 cm)



Rey Akdogan, *Sequence III*, 2015

PVC vinyl, aluminum hardware  
140 x 32 x 1 inches (355.6x81.3x2.5cm)





Rey Akdogan, [*PVC screen curtain*], 2014

PVC strips, metal  
276 x 142 inches (701 x 361 cm)





Rey Akdogan, *Sequence VII (GF)*, 2014

Plastic cardboard, cotton string  
47 x 64.5 inches (119.4 x 163.8 cm)





Rey Akdogan, *Sequence IV (GF)*, 2014

Plastic, hardboard  
30 x 45 inches (76.2 x 114.3 cm)











Rey Akdogan, *Section V (GF)*, 2014

Acrylic paint, Plexiglass, plastic, glass  
24 x 20 x 5 inches (61 x 51 x 12.7 cm)









Rey Akdogan, *Episode I (GF)*, 2014

Rosco paint, image transfer on plexiglass  
24 x 18 inches (61 x 45.7 cm)





Rey Akdogan, *Folds II (GF)*, 2014

Graphite on paper  
12 x 9 inches (30.5 x 22.9 cm)



Rey Akdogan, *Folds I (GF)*, 2014

Graphite on paper  
12 x 9 inches (30.5 x 22.9 cm)





Rey Akdogan, *Folds VI (GF)*, 2014

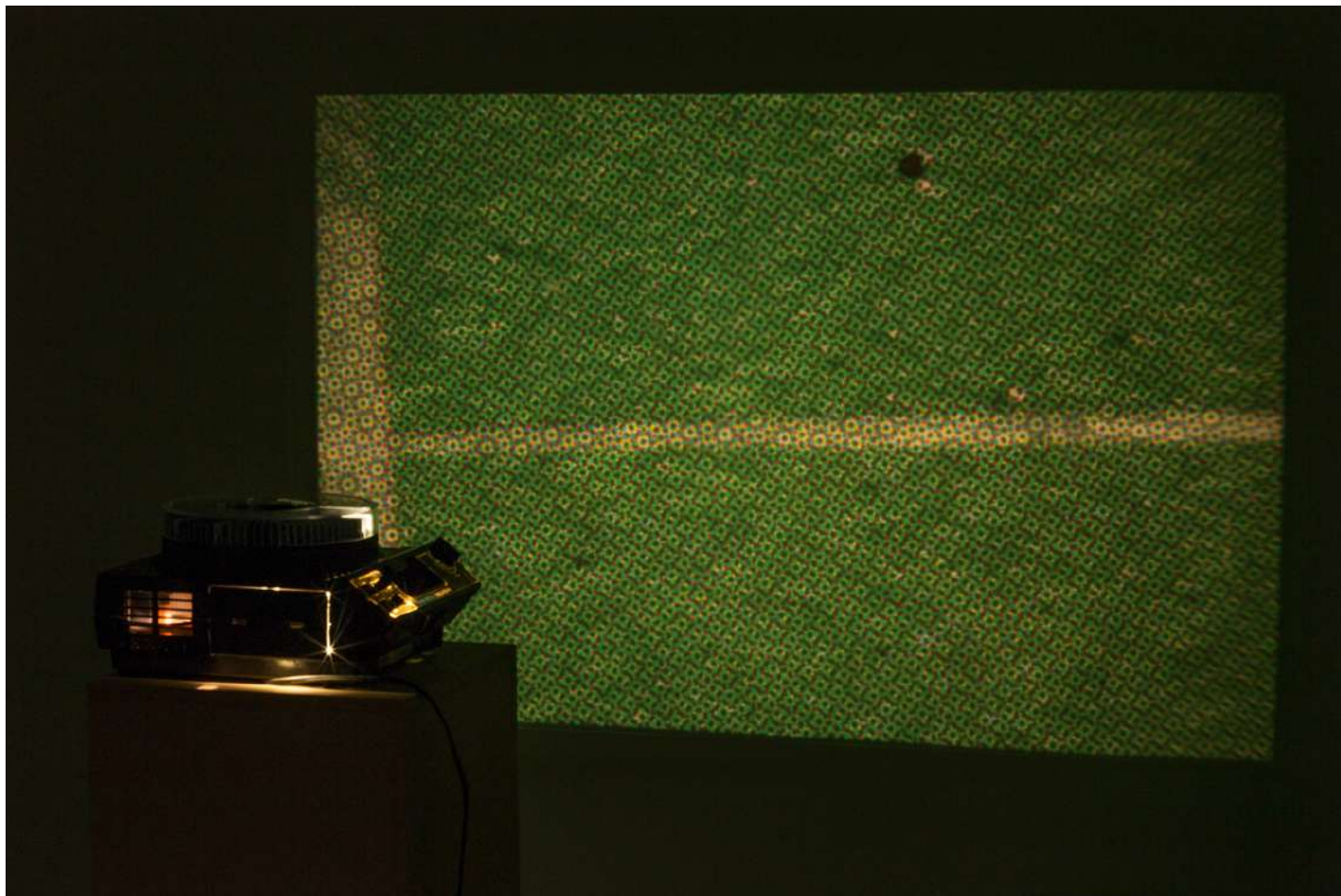
Graphite on paper  
12 x 9 inches (30.5 x 22.9 cm)





Rey Akdogan, *Carousel #7 (SN--GF)*, 2014

80 slides, projector  
Approx. 13 mins.



Rey Akdogan, *Carousel #7 (SN--GF)*, 2014

80 slides, projector  
Approx. 13 mins.



info@hannahhoffman.la  
+1.213.263.9681

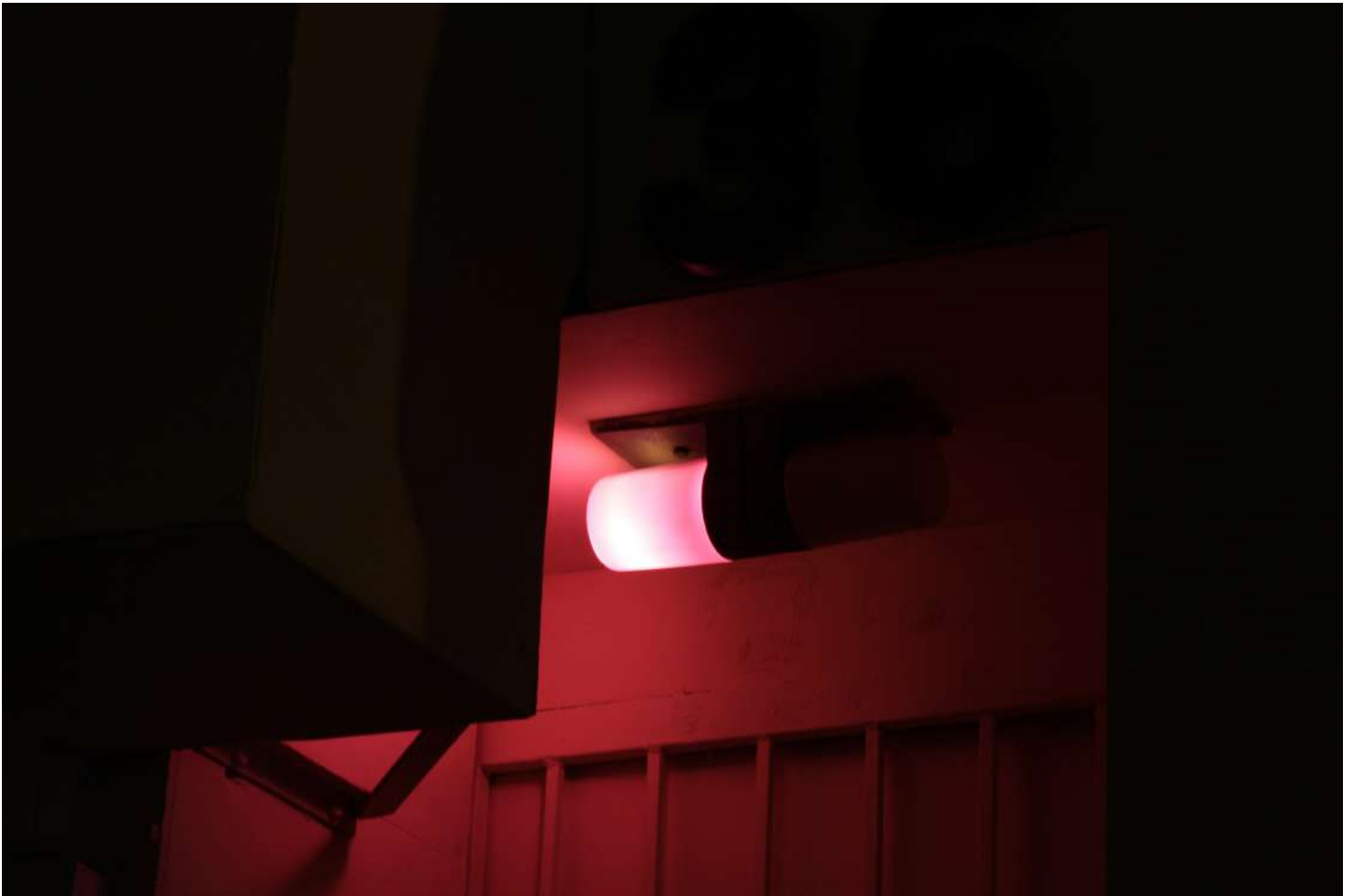
## HANNAH HOFFMAN

REY AKDOGAN

*Night Curtain* (September 16, 2012 – October 14, 2012)

Miguel Abreu, New York, NY, USA





Rey Akdogan, *Artikelgruppe*, 2012

Ceiling fan, PVC strip curtain, industrial halogen lights, sandblasted glass diffusers, aluminum fan blades, light with Lee 748 and Lee 238 lighting gels  
Dimensions variable









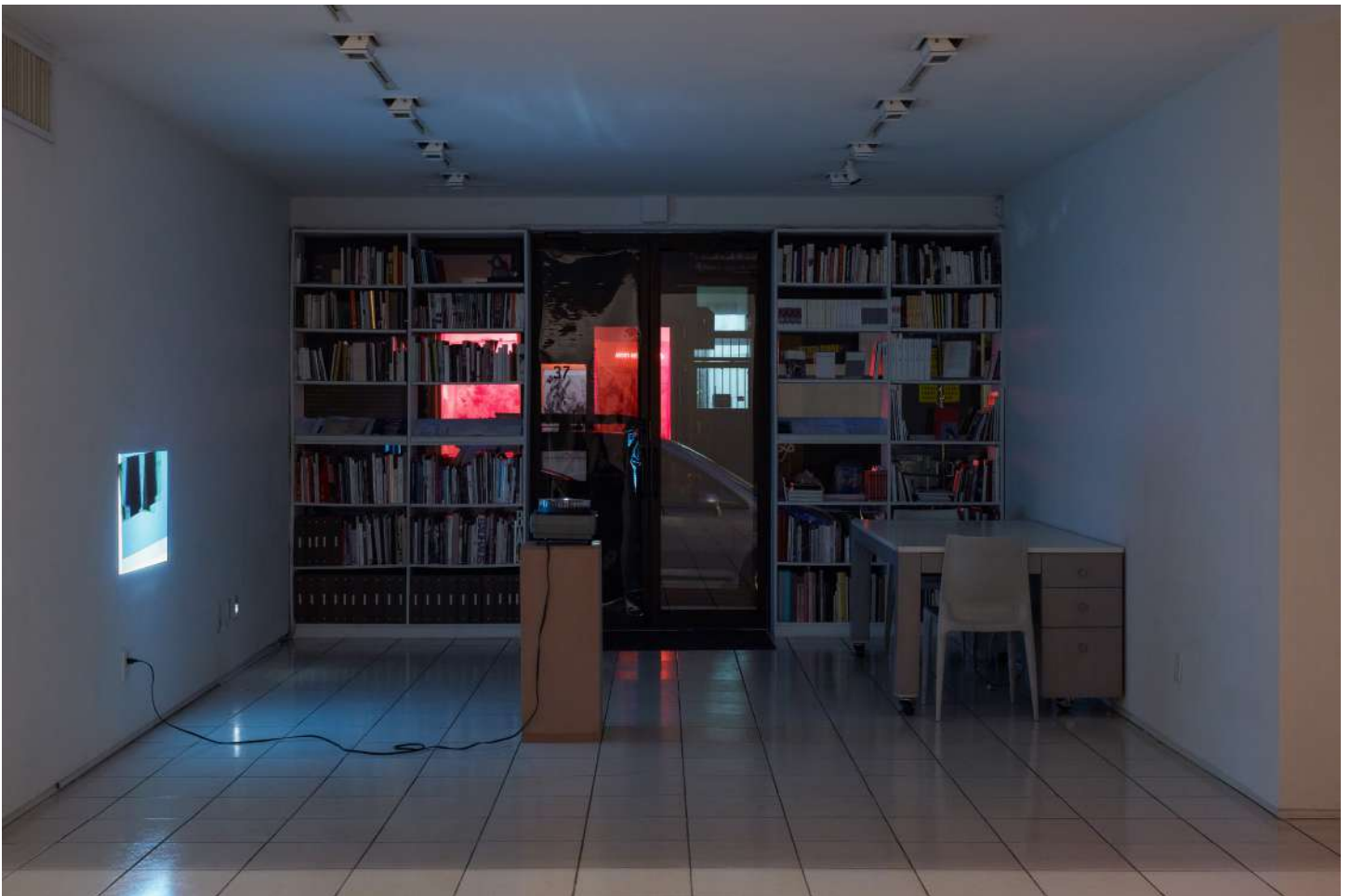




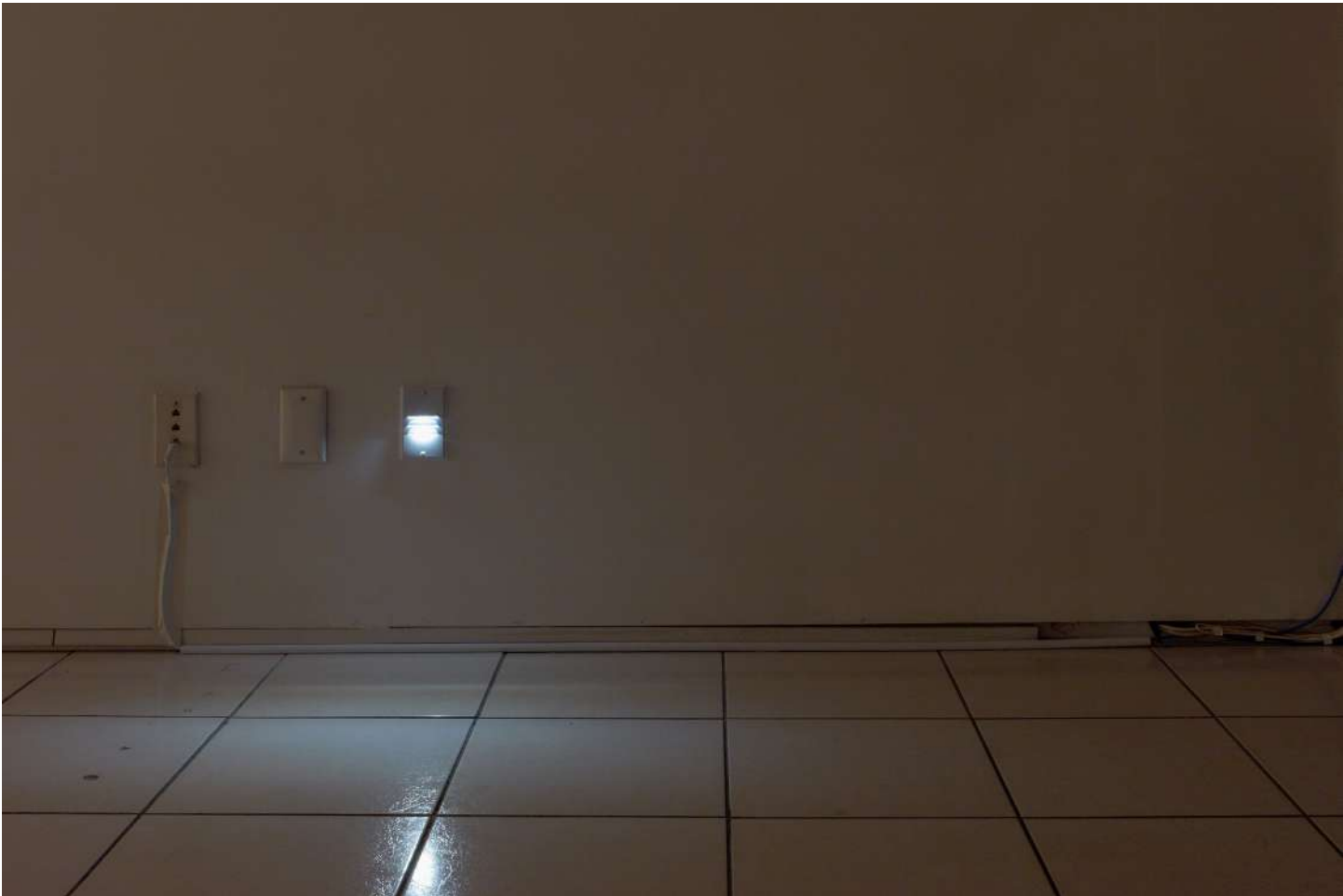












Rey Akdogan, *Carousel #1*, 2010-2012

Slide projection, running time approx. 13 minute loop  
(80 slides) Lighting gels, black Cinefoil and assorted  
colored packaging materials held together by slide  
frames  
Dimensions variable



info@hannahhoffman.la  
+1.213.263.9681

## HANNAH HOFFMAN

REY AKDOGAN

*Off Set* (June 3, 2012 - September 17, 2012)

MoMA PS1, New York, NY, USA

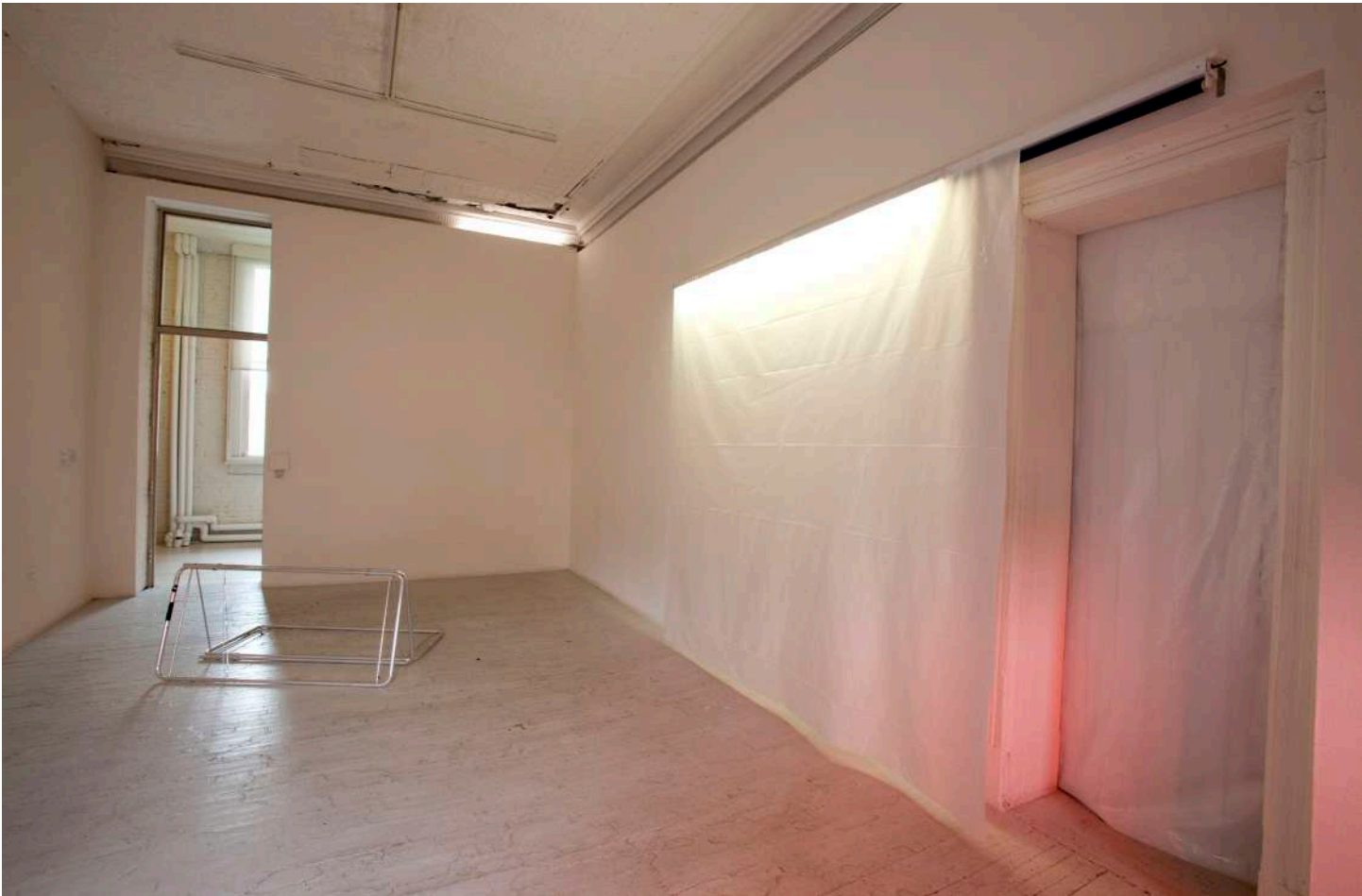


Rey Akdogan, *Off Set*, 2012

Fluorescent lighting, colored lighting tube sleeves, privacy screen, metallic curtain fringes, Mylar, magnets, tape, cotton string, construction film, lighting gel #77, lighting gel #19, open window, vinyl glitter fabric, cardboard tube







Rey Akdogan, *Carousel #5*, 2011

Slide projection, running time approx. 13 minute loop  
Lighting gels, light correction gels, assorted colored  
packaging material held together by slide frames  
Dimensions variable





