

OLGA BALEMA

**SELECT EXHIBITIONS
2013–2023**

HANNAH HOFFMAN

OLGA BALEMA
Born in Ukraine, 1984.
Lives and works in New York, NY, USA.

EDUCATION

- 2009 Master of Fine Arts, New Genres, University of California
Los Angeles, CA, US
- 2006 Bachelor of Fine Arts, Sculpture, University of Iowa, Iowa
City, IA, US

SOLO EXHIBITIONS

- 2023 The third dimension, Bridget Donahue Gallery, New York
City, NY, US
- 2023 Loon, Hannah Hoffman Gallery, Los Angeles, CA, US
- 2022 Olga Balema & Win McCarthy, Galerie Fons Welters,
Amsterdam, Netherlands
- 2022 Formulas, Croy Nielson, Vienna, Austria
- 2021 Computer, Camden Art Center, London, UK
- 2019 brain damage, Bridget Donahue, New York, NY
- 2017 None of the beauty of the landscape can reach her pupils
anymore, High Art, Paris, France
- 2017 On The Brink Of My Sexy Apocalypse, Hannah Hoffman,
Los Angeles, CA, US
- 2016 Motherland, Galerie Fons Welters, Amsterdam, Netherlands
- 2016 Early Man, Swiss Institute for Contemporary Art, New
York, NY, US
- 2016 Blasted Health, Capri, Düsseldorf, Germany
- 2015 One reenters the garden by becoming a vegetable,
Kunstverein Nürnberg, Albrecht Dürer Society, Nürnberg,
Germany
- 2015 Cannibals, Croy Nielsen, Berlin, Germany
- 2015 Olga Balema & Anne De Vries: Listening, Michael
Thibault, Los Angeles, CA, US
- 2014 Her Curves, High Art, Paris, France
- 2014 Warm Bodies (w. Jonathan Baldock), Kunstvereinigung
Diepenheim, Diepenheim, Netherlands
- 2013 Body of Work, Galerie Fons Welters, Amsterdam,
Netherlands
- 2013 What Enters, 1646, Den Haag, Netherlands
- 2011 Positive thinking: Actions speak louder than words, The

Vanity, Los Angeles, CA

SELECT GROUP EXHIBITIONS & EVENTS

- 2023 Looking Back / The 13th White Columns Annual, Selected by Olivia Shao, White Columns, New York, NY, US
- 2022 Catechism, Bridget Donahue, New York, NY
- 2022 Olga Balema, Elene Chantladze, Birke Gorm, Ernst Yohji Jaeger, and Marie Lund, Croy Nielsen, Vienna, Austria
- 2021 Itinerarios XXVI, Centro Botin Centre, Santander, Spain
- 2021 Moon Tent Celebration with Ei Arakawa, Swiss Institute, New York, NY, US
- 2021 Art-O-Rama, Maison R&C, Marseille, France
- 2021 Around the Day in Eighty Worlds, Musée d'Art contemporain Bordeaux, France
- 2020 Body. Gaze. Power. A Cultural History of the Bath, Staatliche Kunsthalle Baden-Baden, Baden-Baden, Germany
- 2020 Aria Dean, Helen Marten, Kelley Walker, Olga Balema, Raque Ford, Greene Naftali, New York, NY, US
- 2019 You: Works from the Lafayette Anticipations Collection, Musée d'Art moderne de la Ville de Paris, France
- 2019 Maskulinitäten, Bonner Kunstverein, Bonn; Kölnischer Kunstverein, Cologne; Kunstverein für die Rheinlande und Westfalen, Düsseldorf, Germany
- 2019 A Home Is Not A House, Fri Art - Centre d'art de Fribourg / Kunsthalle Freiburg, Switzerland
- 2019 Whitney Biennial, Whitey Museum of American Art, New York, NY, US
- 2018 The Baltic Triennial I3, Vilnius, Lithuania
- 2018 Paulo Cunha e Silva Art Price, Porto, Portugal
- 2018 Blind Faith, Haus der Kunst, München, Germany
- 2018 Converter, Kunstmuseum St. Gallen, Switzerland
- 2017 Contingencies: Arte Povera and After, Luxembourg & Dayan, New York, NY, US
- 2017 On Half A Tank Of Gas, Swiss Institute and Kunsthhaus Glarus, Glarus, WI, US
- 2017 in awe, Kunsthalle Exnergasse, Vienna, Austria
- 2017 I'm Nobody!, High Art, Paris, France
- 2017 Produktion. Made in Germany Drei, Kestner Gesellschaft, Kunstverein Hannover, Sprengel Museum, Hannover, Germany
- 2017 Ungestalt, Kunsthalle Basel, Basel, Switzerland
- 2017 Ewig Weibliche, Koppe Astner, Glasgow, Scotland

HANNAH HOFFMAN

- 2017 Physiscal Mind Restless Hands, Micky Schubert, Berlin, Germany
- 2017 Olga Balema, Marlie Mul, Iza Tarasewicz, Croy Nielsen, Vienna, Austria
- 2017 Hours and Hours of Inactivity, n.b.k, Berlin, Germany
- 2016 Adhesive Products, Bergen Assembly, Bergen, Norway
- 2016 Marriage, Queer Thoughts, New York, NY,US
- 2016 Life Itself, Moderna Museet, Stockholm, Sweden
- 2015 The Ultimate Vessel, Koppe Astner, Glasgow, Scotland
- 2015 By the Bearer in whose Name it is Issued, Center for Style, Melbourne, Australia
- 2015 Stranger than paradise, Sies + Höke, Düsseldorf, Germany
- 2015 Where The Awing Flaps, Éric Hussenot, Paris, France
- 2015 Campana I, Luis Campana, Berlin, Germany
- 2015 Function Follows Vision, Vision Follows Reality, Kunsthalle Wien, Vienna, Austria
- 2015 Surround Audience, Triennial, New Museum, New York, NY, US
- 2015 City, William Arnold, Brooklyn, NY, US
- 2015 Towers of Dub (Live Orbient 3.9.93), Thomas Duncan Gallery, Los Angeles, CA, US
- 2014 Musique Concrète, Michael Thibault, Los Angeles, CA
- 2014 Doom: Surface Control, Le Magasin Grenoble - CNAC, Grenoble, France
- 2014 Puddle, pothole, portal, Sculpture Center, New York, NY
- 2014 Dylans lost it maybe, Croy Nielsen, Berlin, Germany
- 2014 New Dawn, Silberkuppe, Berlin, Germany
- 2014 From whose ground heaven and hell compare, Croy Nielsen, Berlin , Germany
- 2014 Nature after Nature, Fridericianum, Kassel, Germany
- 2014 Geographies of Contamination, David Roberts Art Foundation, London, UK
- 2014 Material Memory, Fluxia, Milan, Italy
- 2014 Apples and Pears, DREI, Cologne, Germany
- 2013 Urschleim, Fauna, Copenhagen, Denmark
- 2013 <3, High Art, Paris, France
- 2013 The Unpainted Landscape, Mihai Nicodim Galley, Los Angeles, CA
- 2013 Slip, The Approach, London, UK
- 2013 Unstable Media, Gallery Martin van Zomeren, Amsterdam, Netherlands
- 2013 Cast Recording, Prism, Los Angeles, CA
- 2012 RijksakademieOPEN, Rijksakademie van beeldende

- kunsten, Amsterdam, Netherlands
- 2012 Latent Stare, Casco, Utrecht, Netherlands
- 2012 Closed because of the goings on, Duquon Hourdequin,
Paris, France
- 2011 RijksakademieOPEN, Rijksakademie van beeldende
kunsten, Amsterdam, Netherlands
- 2010 Support Group, Thomas Solomon Gallery, Los Angeles,
CA, US
- 2010 Dr. Zomb, Glendale College, Los Angeles, CA, US
- 2009 MFA Thesis Show, UCLA, Los Angeles, CA, US
- 2009 May Show, Los Angeles, CA, US
- 2008 GLAMFA, CSULB, Long Beach, CA, US
- 2008 Kleveland, Bonelli Contemporary, Los Angeles, CA, US
- 2008 Delusionarium, Bonelli Contemporary, Los Angeles, CA,
US

AWARDS, GRANTS, RESIDENCIES

- 2019 Nominated for the Paulo Cunha e Silva Art Price, Porto,
Portugal (award)
- 2017 The Pollock-Krasner Foundation (grant recipient)
- 2012 Rijksakademie van beeldende kunsten/ Dutch Ministry of
Education, Culture and Science (residency)
- 2011 Rijksakademie van beeldende kunsten/ Dutch Ministry of
Education, Culture and Science (residency)
- 2010 Skowhegan School of Painting and Sculpture (residency)

PUBLIC COLLECTIONS

Centre National des Arts Plasticique, France
De Nederlandsche Bank, The Netherlands
Fondation d'Enterprise Galeries Lafayette, France

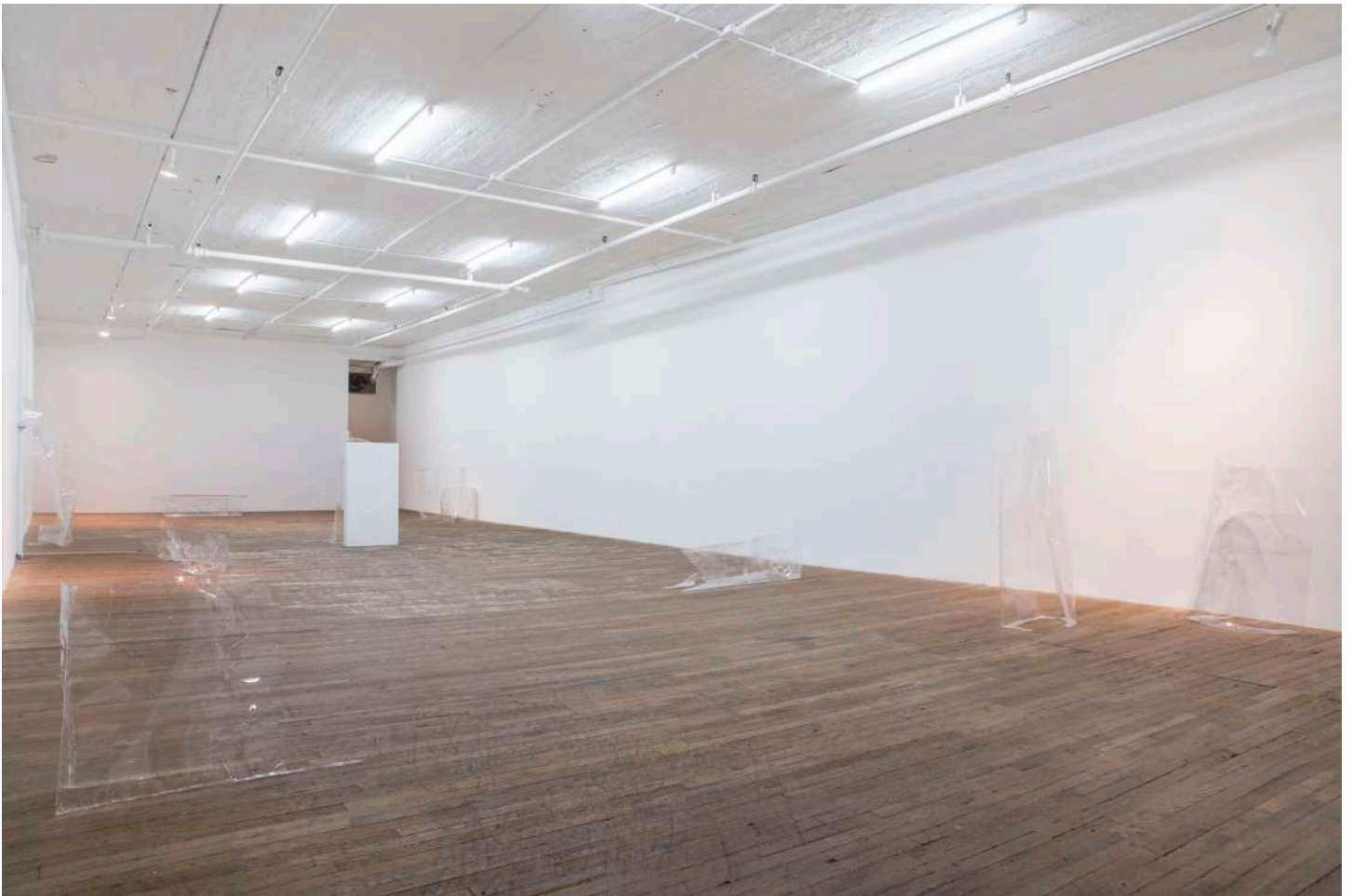
info@hannahhoffman.la
+1.213.263.9681

HANNAH HOFFMAN

OLGA BALEMA

The third dimension (November 8, 2023 – January 13, 2024)

Bridget Donahue, New York, NY, US



Olga Balema, *Loop 56210*, 2023

Polycarbonate sheeting, acrylic paint, solvent
24 3/4 × 9 1/2 × 33 in. (62.87 × 24.13 × 83.82 cm)





Olga Balema, *Loop 23375*, 2023

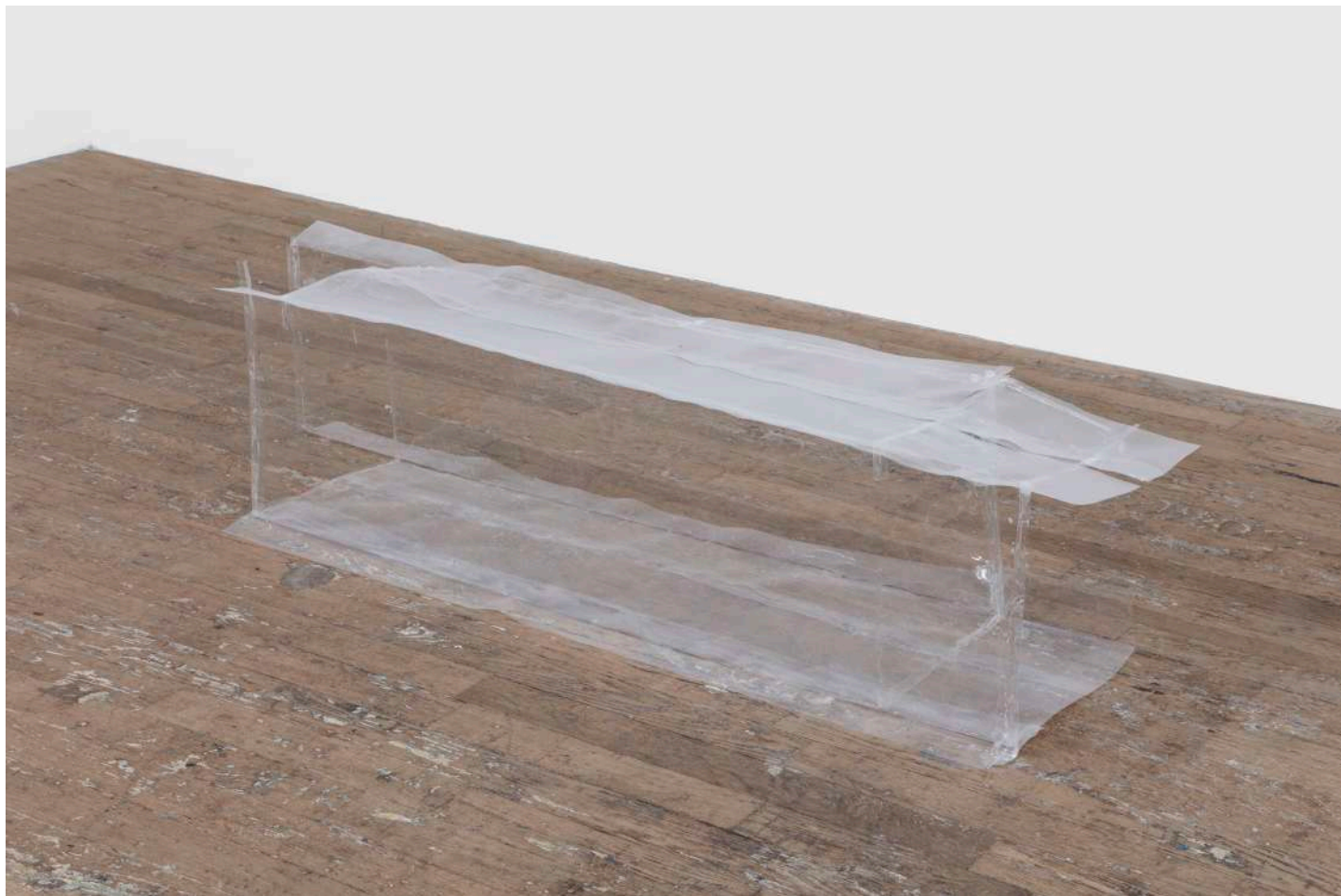
Polycarbonate sheeting, acrylic paint, solvent
7 × 18 × 40 in. (170.18 × 45.72 × 101.60 cm)





Olga Balema, *Loop 51125*, 2023

Polycarbonate sheeting, acrylic paint, solvent
15 × 19 × 56 in. (38.10 × 48.26 × 142.24 cm)

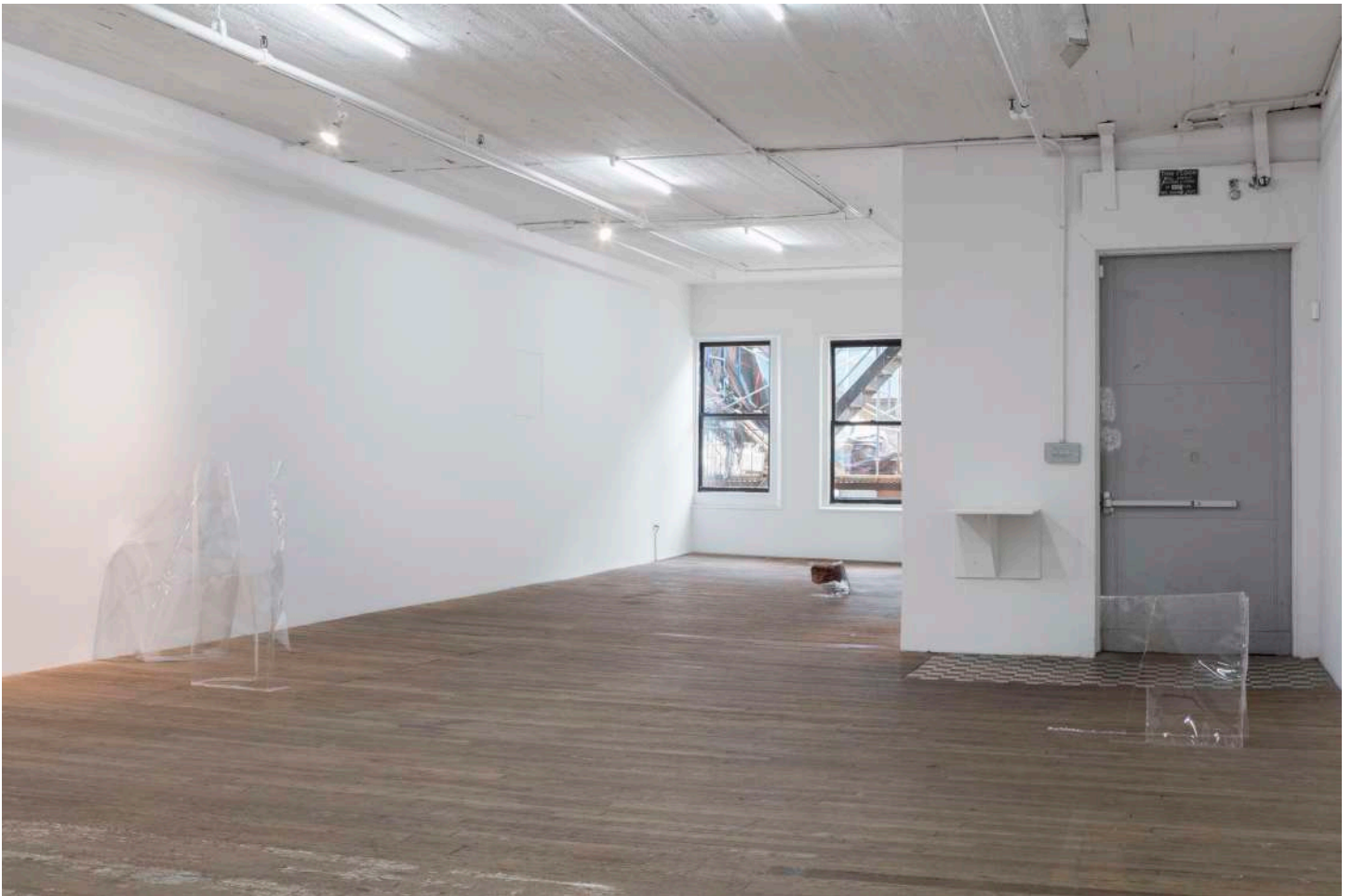




Olga Balema, *Loop 10010*, 2023

Polycarbonate sheeting, acrylic paint, solvent
Sculpture: 55 × 31 × 21 in. (139.70 × 78.74 × 53.34 cm)
Pedestal: 48 × 24 × 6 in. (121.92 × 60.96 × 15.24 cm)











Olga Balema, *Loop 12286*, 2023

Polycarbonate sheeting, acrylic paint, solvent
13 1/2 × 16 1/2 × 23 in. (34.29 × 41.91 × 58.42 cm)



info@hannahhoffman.la
+1.213.263.9681

HANNAH HOFFMAN

OLGA BALEMA

Loon (April 8 - May 13, 2023)

Hannah Hoffman, Los Angeles, CA, US





Olga Balema, *Loop 17*, 2023

Polycarbonate sheeting, acrylic paint, solvent
7 x 11 x 12 1/2 inches (17.8 x 27.9 x 30.5 cm)



Olga Balema, *Loop 17*, 2023

Polycarbonate sheeting, acrylic paint, solvent
7 x 11 x 12 1/2 inches (17.8 x 27.9 x 30.5 cm)





Olga Balema, *Loop 70*, 2023

Polycarbonate sheeting, acrylic paint, solvent
48 x 15 x 13 inches (121.9 x 38.1 x 33 cm)







Olga Balema, *Loop 112*, 2023

Polycarbonate sheeting, acrylic paint, solvent
8 1/2 x 33 x 8 1/4 inches (21.6 x 83.8 x 21 cm)



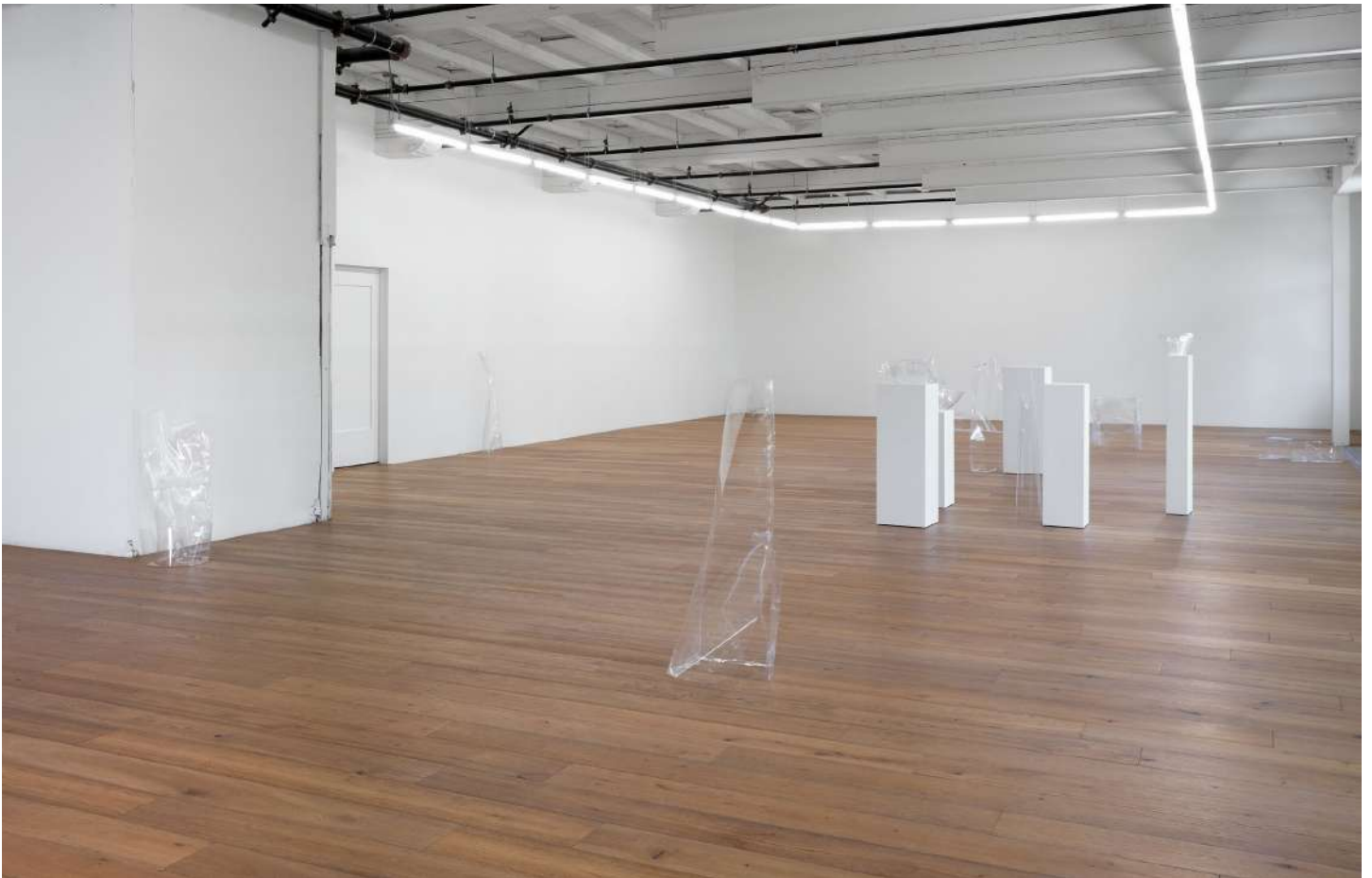




Olga Balema, *Loop 135*, 2023

Polycarbonate sheeting, acrylic paint, solvent
44 1/2 x 10 x 8 inches (113 x 25.4 x 20.3 cm)







Olga Balema, *Loop 2*, 2023

Polycarbonate sheeting, acrylic paint, solvent
13 x 68 x 24 1/2 inches (33 x 172.7 x 62.2 cm)



OLGA BALEMA

Formulas (November 9, 2022 - December 17, 2022)

Croy Nielsen, Vienna, Austria

























Olga Balema, *Untitled*, 2022

Paper, tape
123 × 75 cm (48 3/8 × 29 1/2 inches)









info@hannahhoffman.la
+1.213.263.9681

HANNAH HOFFMAN

OLGA BALEMA

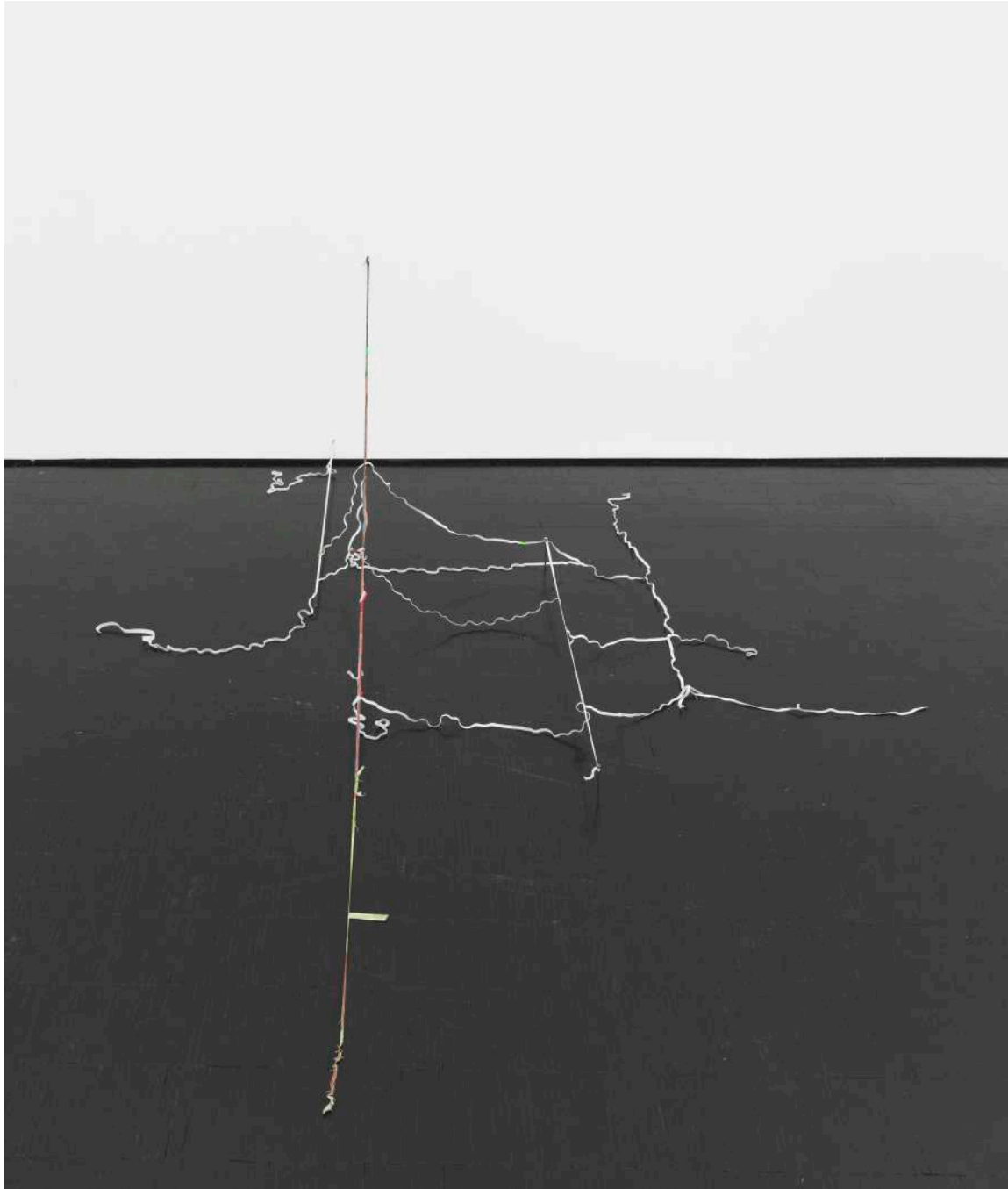
Olga Balema / Greta Bratescu (September 11 - November 5, 2022)
Galerie Barbara Weiss, Berlin, Germany





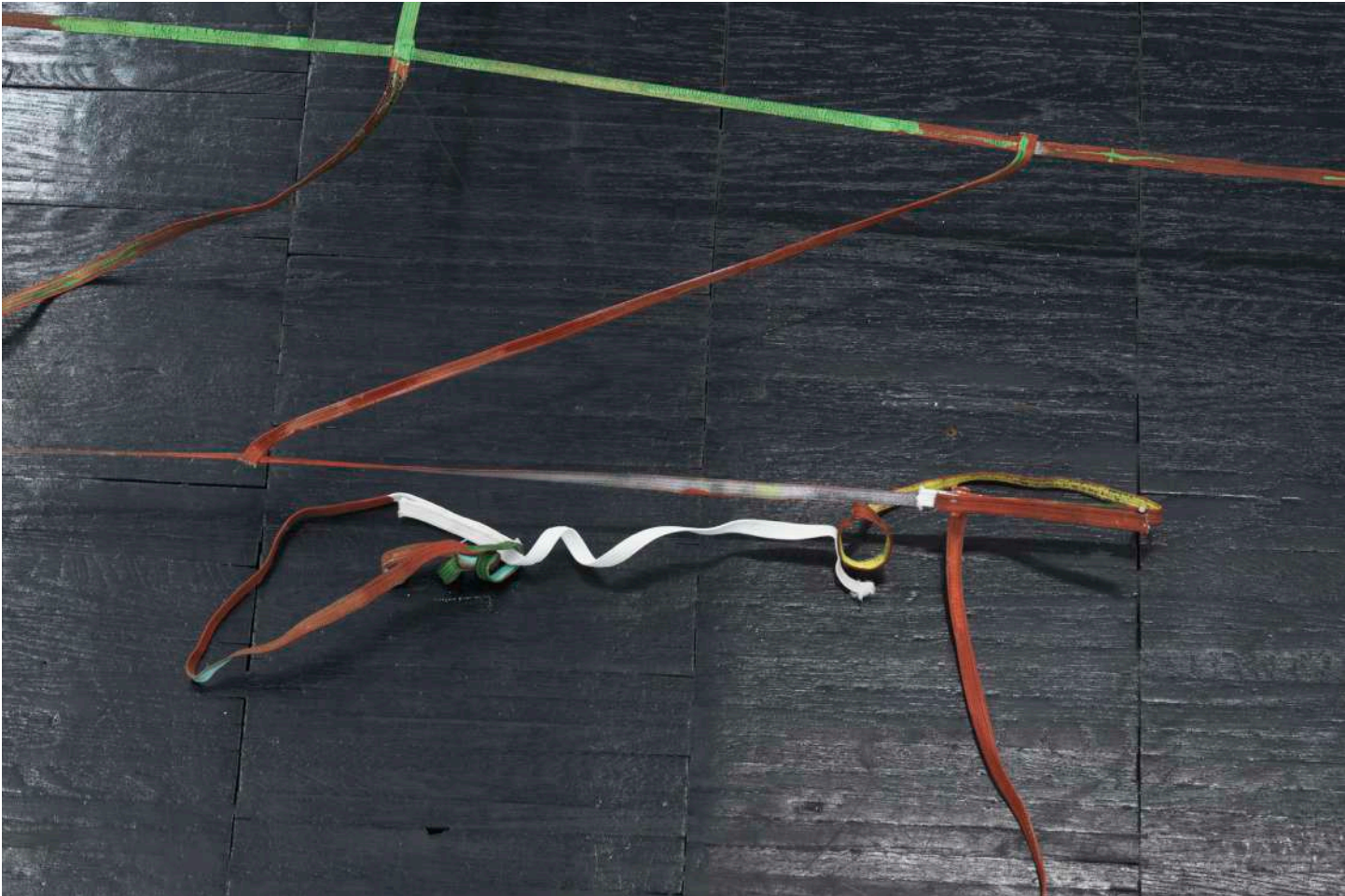


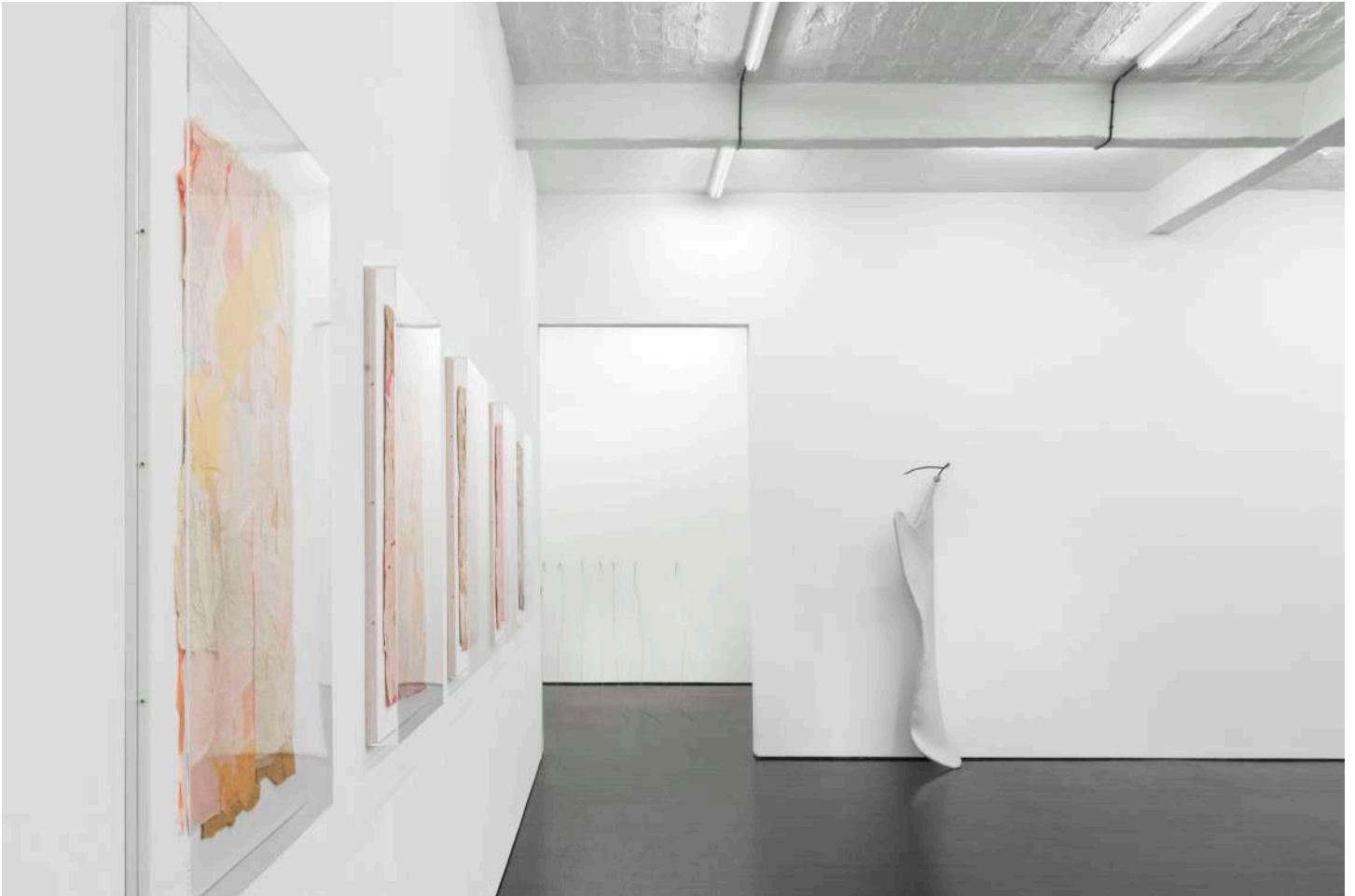












Olga Balema, *Biomorphic Attachment*, 2014

Latex, foam, steel

76 3/4 x 23 2/3 x 15 3/4 inches (195 x 60 x 40 cm)



Olga Balema, *Saliva in the shape of words*, 2014

Fabric, electronics, wood
39 1/3 x 78 3/4 x 118 inches (100 x 200 x 300 cm)



Olga Balema, *Saliva in the shape of words*, 2014

Fabric, electronics, wood
39 1/3 x 78 3/4 x 118 inches (100 x 200 x 300 cm)



info@hannahhoffman.la
+1.213.263.9681

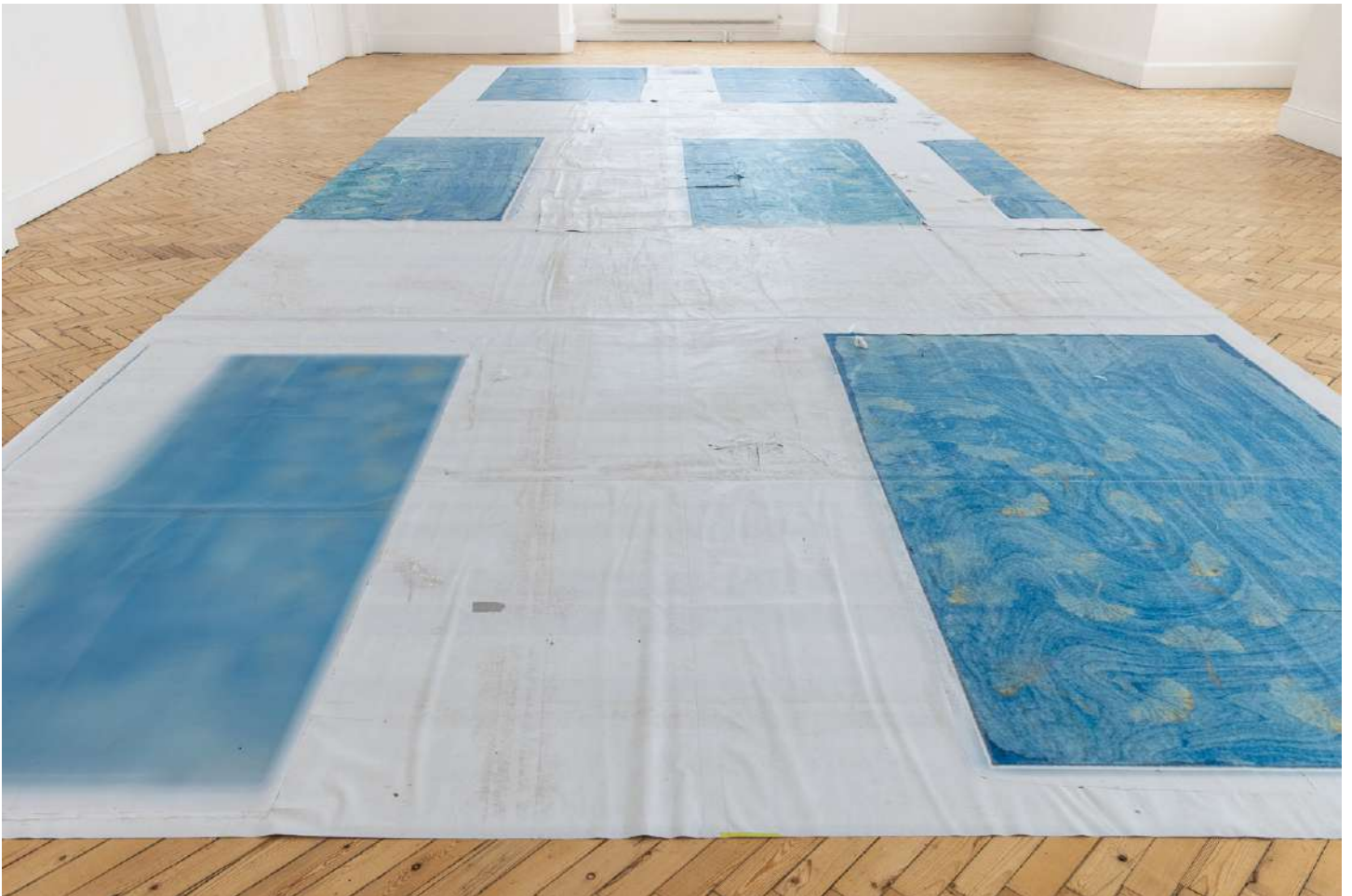
HANNAH HOFFMAN

OLGA BALEMA
Computer (May 21 - August 29, 2021)
Camden Art Centre, London, UK

Olga Balema, *Computer*, 2021

Mixed media
429.13 x 167.32 inches (1090 x 425 cm)











info@hannahhoffman.la
+1.213.263.9681

HANNAH HOFFMAN

OLGA BALEMA

The 2019 Whitney Biennial (May 17 - September 22, 2019)
Whitney Museum of American Art, New York, NY, US





Olga Balema, *Leaf*, 2019

Styrofoam, tape, velcro, foamcore, glue, steel, string
17 x 44 x 23 inches (43.2 x 111.8 x 58.4 cm)





Olga Balema, *Floor*, 2019

Styrofoam, watercolor, tape, acrylic
30 x 60 x 70 inches (76.2 x 152.4 x 177.8 cm)





Olga Balema, *Bread of Life*, 2016

Tulle, latex, steel
43 x 22 x 19 inches (109.2 x 55.9 x 48.3 cm)





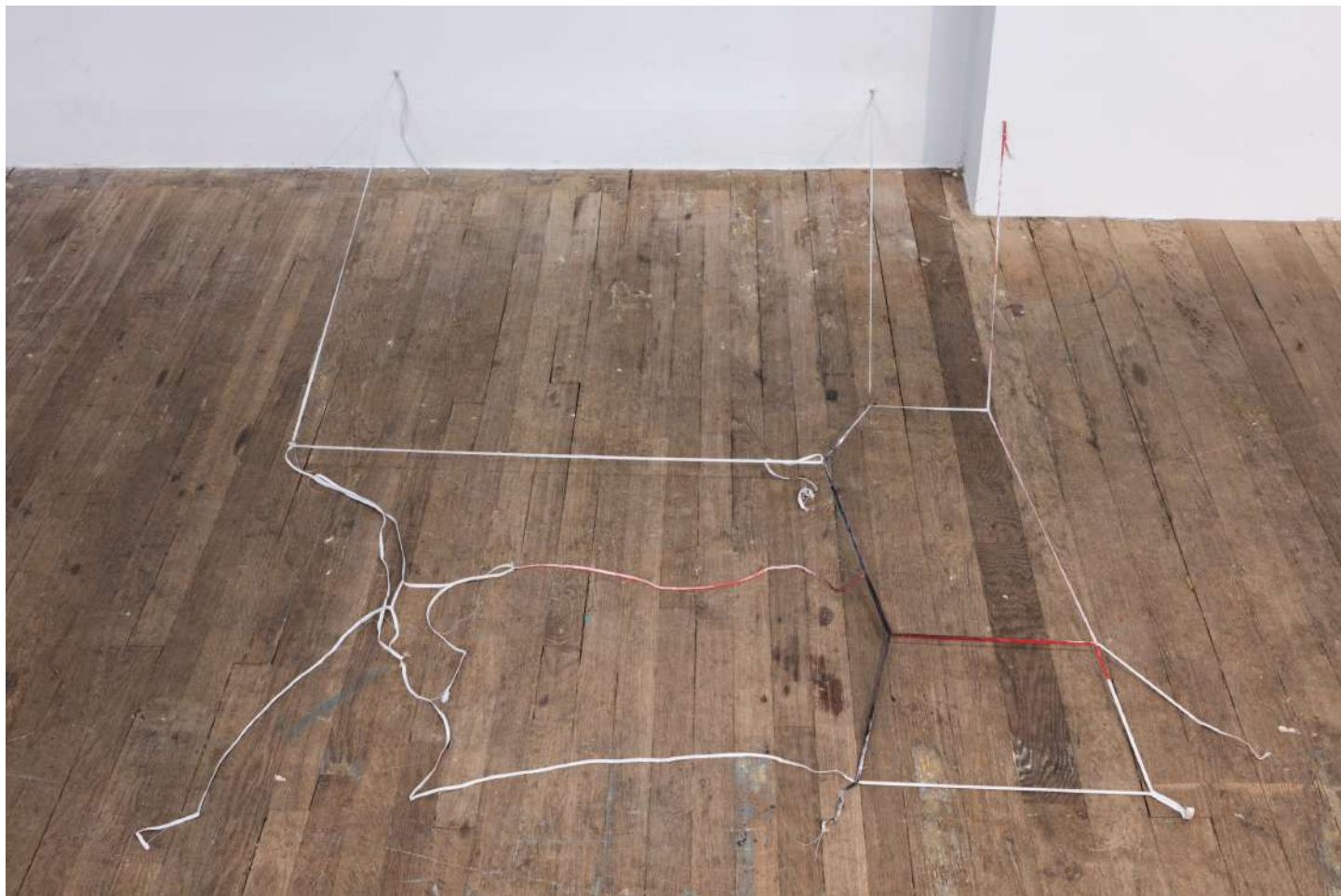
OLGA BALEMA
brain damage (May 25 - July 26, 2019)
Bridget Donahue, New York, NY, US





Olga Balema, 9, 2019

Elastic band, paint, glue, nails, staples
8 × 33 1/2 × 88 in. (20.32 × 85.09 × 223.52 cm)















Olga Balema, 4, 2019

Elastic band, paint, glue, nails, staples
4 × 69 × 91 in. (10.16 × 175.26 × 231.14 cm)



Olga Balema, 4, 2019

Elastic band, paint, glue, nails, staples
4 × 69 × 91 in. (10.16 × 175.26 × 231.14 cm)



Olga Balema, 4, 2019

Elastic band, paint, glue, nails, staples
4 × 69 × 91 in. (10.16 × 175.26 × 231.14 cm)





info@hannahhoffman.la
+1.213.263.9681

HANNAH HOFFMAN

OLGA BALEMA with Hannah Hoffman
(March 29 - March 31, 2018)
Art Basel Hong Kong, China





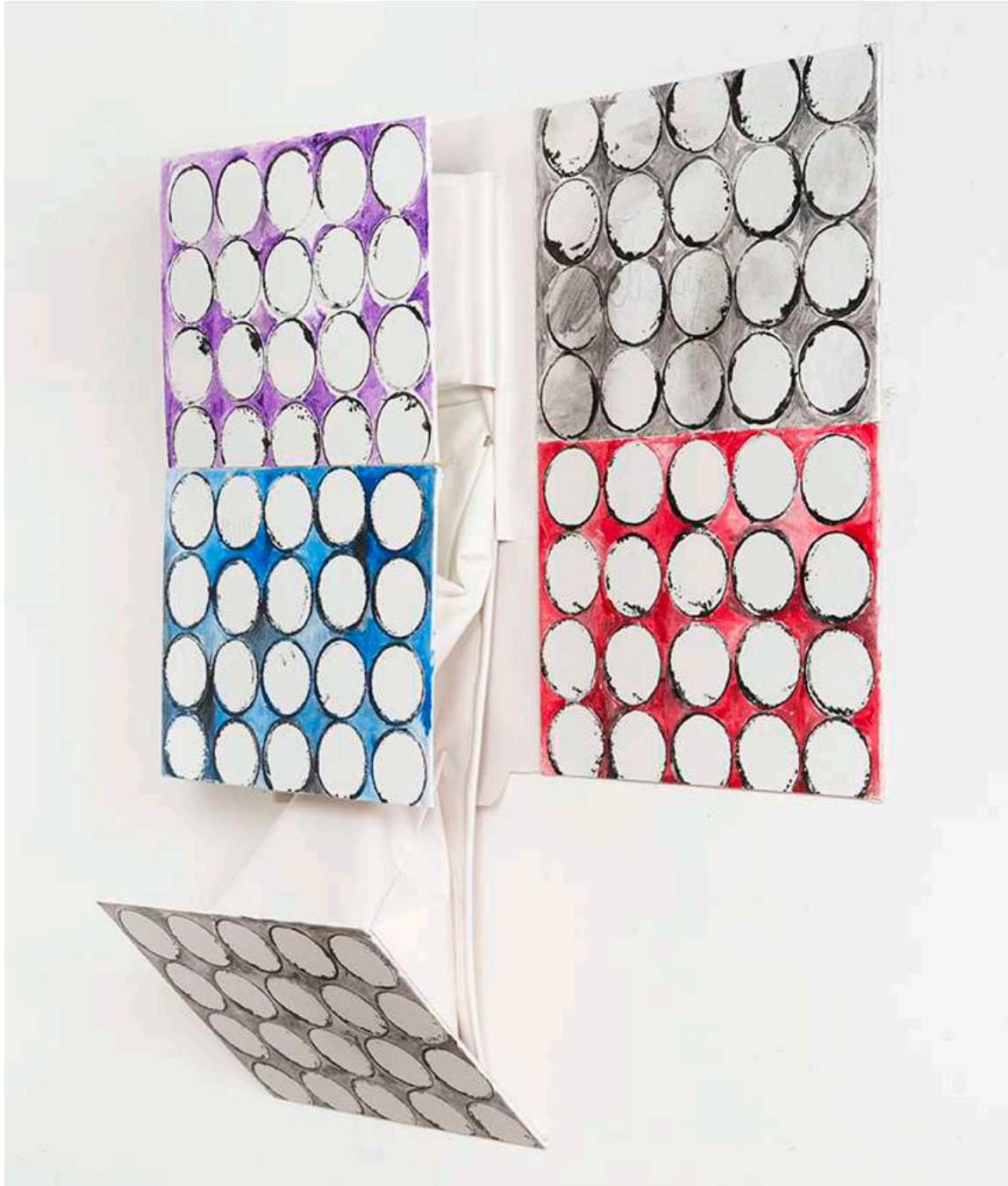
Olga Balema, *Inneres Auge*, 2018

Canvas board, acrylic paint, mannequin arm
36 x 32 x 21 1/2 inches (91.4 x 81.3 x 54.6 cm)



Olga Balema, *Syphon of Identity*, 2018

Canvas board, acrylic paint, vinyl, glue
37 x 31 x 8 1/2 inches (94 x 78.7 x 21.6 cm)



Olga Balema, *untitled*, 2018

Styrofoam
18 x 27 1/2 x 25 inches (45.7 x 69.9 x 63.5 cm)



Olga Balema, *untitled*, 2018

Fabric, latex, steel, glue
34 x 15 1/2 x 12 inches (86.4 x 39.4 x 30.5 cm)



info@hannahhoffman.la
+1.213.263.9681

HANNAH HOFFMAN

OLGA BALEMA

None of the beauty of the landscape can reach her pupils anymore

(October 19 - November 23, 2017)

High Art, Paris, France

Olga Balema, *None of the beauty of the landscape can reach her pupils anymore*

Exhibition View



Olga Balema, *untitled*, 2017

Vinyl, foam, wood, steel
34.4 x 12.4 inches (63 x 32 cm)



Olga Balema, *None of the beauty of the landscape can reach her pupils anymore*

Exhibition View



Olga Balema, *untitled*, 2017

Vinyl, foam, wood, steel
49.6 x 49.2 inches (126 x 125 cm)



Olga Balema, *untitled*, 2017

Vinyl, foam, wood, steel
24.4 x 24.8 inches (62 x 63 cm)



Olga Balema, *None of the beauty of the landscape can reach her pupils anymore*

Exhibition View



Olga Balema, *None of the beauty of the landscape can reach her pupils anymore*

Exhibition View



Olga Balema, *None of the beauty of the landscape can reach her pupils anymore*

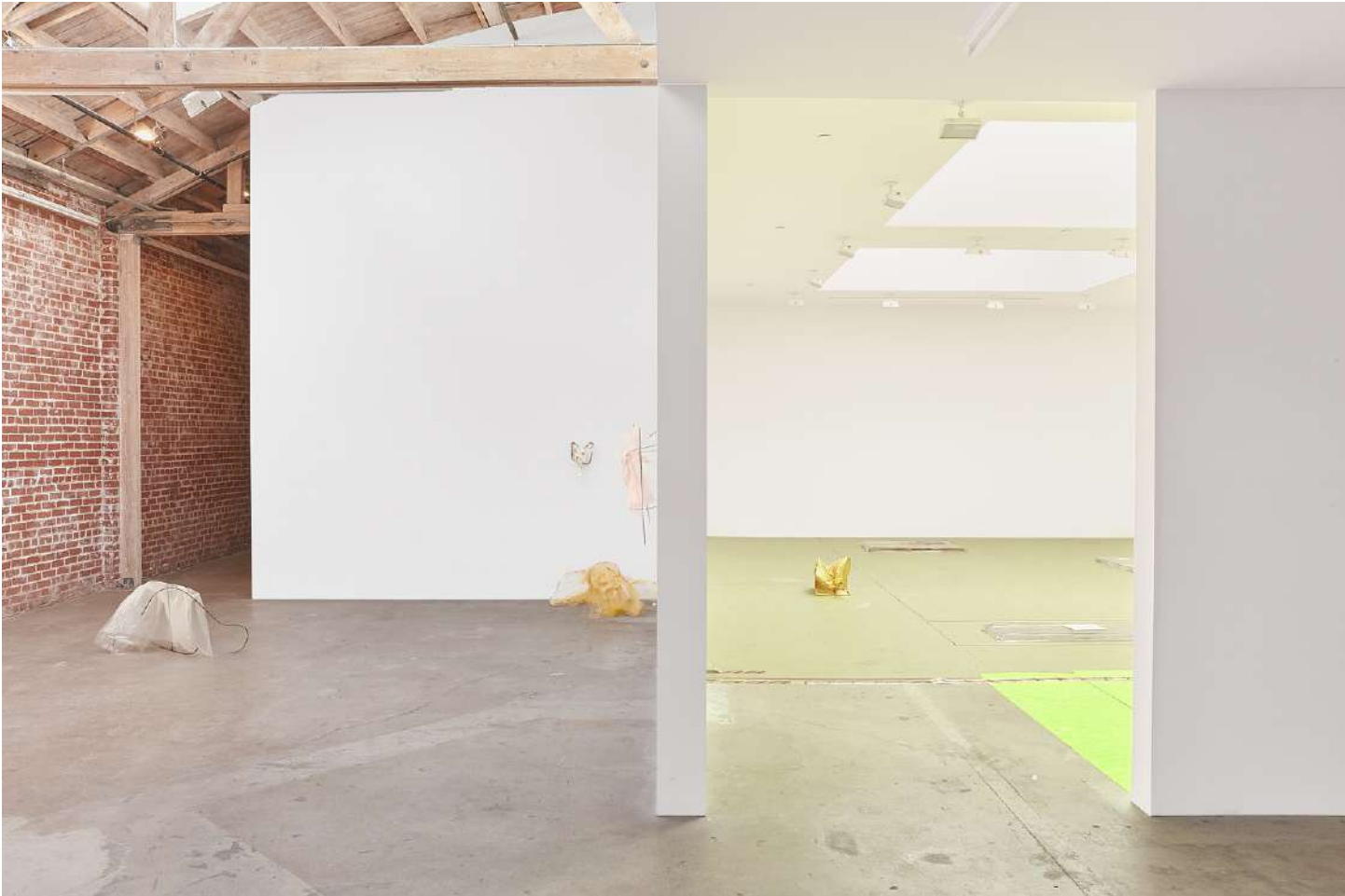
Exhibition View



info@hannahhoffman.la
+1.213.263.9681

HANNAH HOFFMAN

OLGA BALEMA
On The Brink Of My Sexy Apocalypse
(January 25 - March 11, 2017)
Hannah Hoffman, Los Angeles, CA, US









Olga Balema, *Thief in the night*, 2016

Tulle, latex, steel
21 x 24 x 44 inches (53.3 x 61 x 111.8 cm)

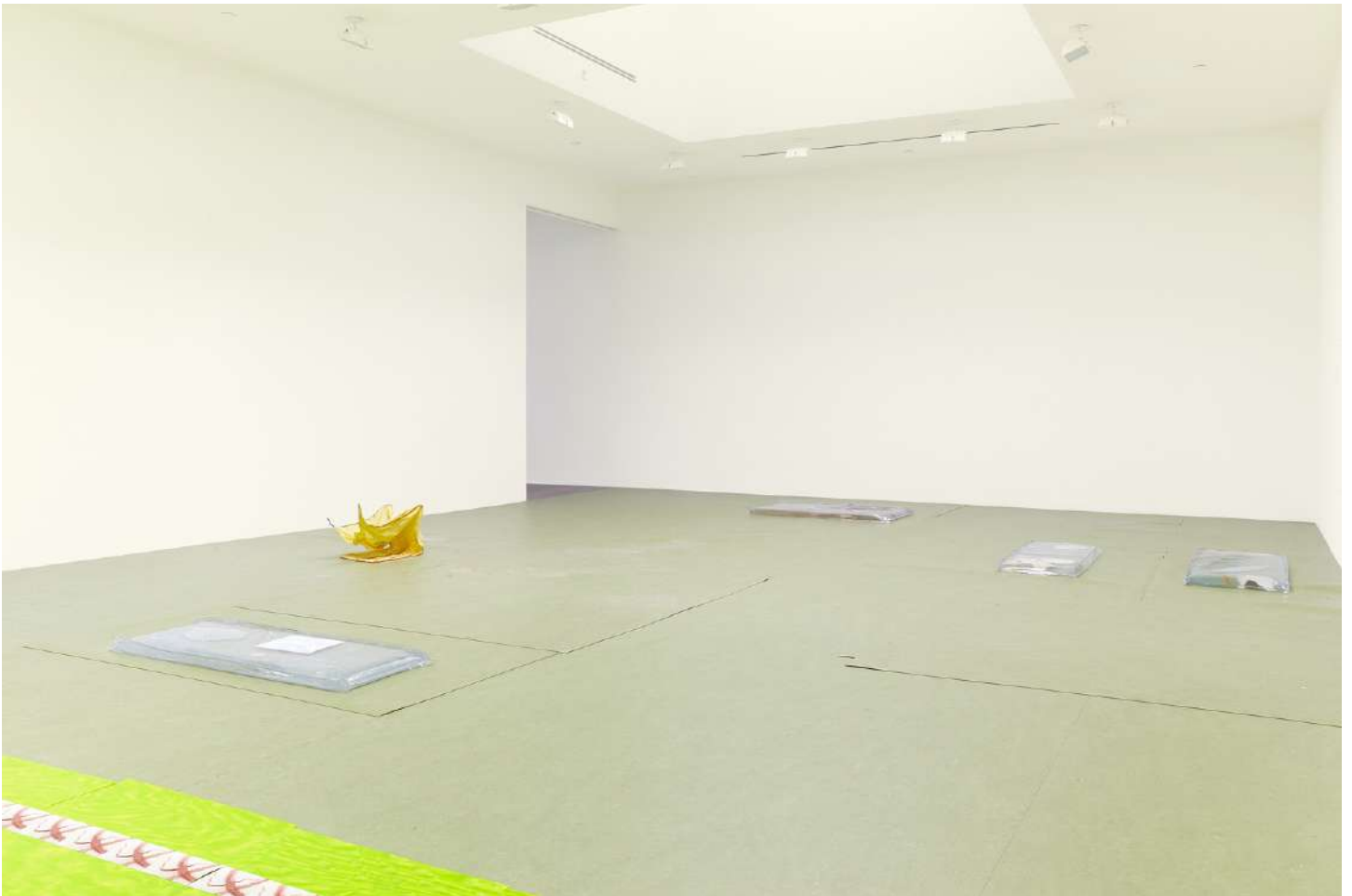


Olga Balema, *a thin skin under which a gigantic cauldron of
blazing fire was blazing,*, 2016

Latex, Magic Sculpt
5 x 9 x 14 inches (12.7 x 22.9 x 35.6 cm)







Olga Balema, *become a stranger to yourself*, 2017

Soft PVC, water, steel, fabric, latex, photographs,
silicone

55 x 30 x 3 inches (139.7 x 76.2 x 7.6 cm)



Olga Balema, *the look*, 2017

Soft PVC, water, latex
54 x 20 x 2 1/2 inches (137.2 x 50.8 x 6.4 cm)





Olga Balema, *Everyone grows relief*, 2016

Steel, fabric, latex, glue, water
21 x 12 x 16 inches (33 x 53.3 x 40.6 cm)







Olga Balema, *Manifestations of our own wickedness
and future idiocy*, 2017

Rowlux Paper, steel, photographs
100 x 204 x 80 inches (254 x 518.2 x 203.2 cm)

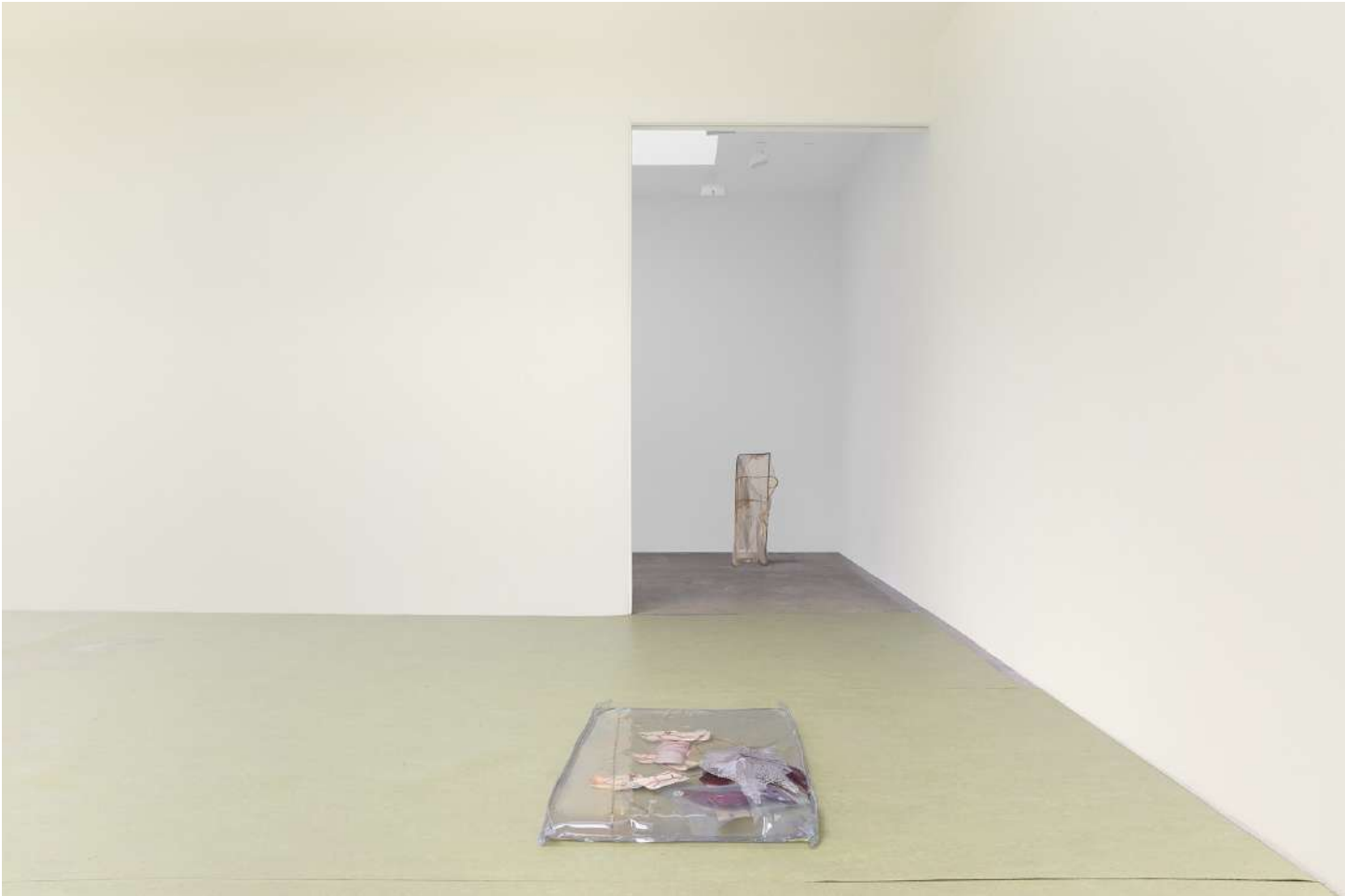


Olga Balema, *A thing filled with evil streams*, 2016

Wood, latex, Magic Sculpt, cell phone motors,
batteries

31 x 8 x 7 inches (78.7 x 20.3 x 17.8 cm)









Olga Balema, *Notes from the Capital*, 2016

Latex, steel, wool fabric, fabric
37 x 19 x 78 inches (94 x 48.3 x 198.1 cm)





info@hannahhoffman.la
+1.213.263.9681

HANNAH HOFFMAN

OLGA BALEMA
Motherland (May 13 - June 18, 2016)
Galerie Fons Welters, Amsterdam









Olga Balema, *Necessity is the mother of all invention*, 2016

Map, latex, pigment, acrylic paint
53 x 63 x 5 inches (135 x 160 x 12 cm)





Olga Balema, *Failure is the mother of success*, 2016

Map, latex, pigment, acrylic paint
53 x 67 x 2 inches (135 x 170 x 5 cm)





info@hannahhoffman.la
+1.213.263.9681

HANNAH HOFFMAN

OLGA BALEMA
Early Man (April 15 - May 19, 2016)
Swiss Institute, New York, NY, US





Olga Balema, *Globe*, 2016

Globe, latex, pigment
38 x 24 x 20 inches (96.5 x 61 x 50.8 cm)







Olga Balema, *Our America Spread of Western Civilization*,
2016

Map, latex, pigment
84 x 47 x 5 inches (213.4 x 119.4 x 12.7 cm)



info@hannahhoffman.la
+1.213.263.9681

HANNAH HOFFMAN

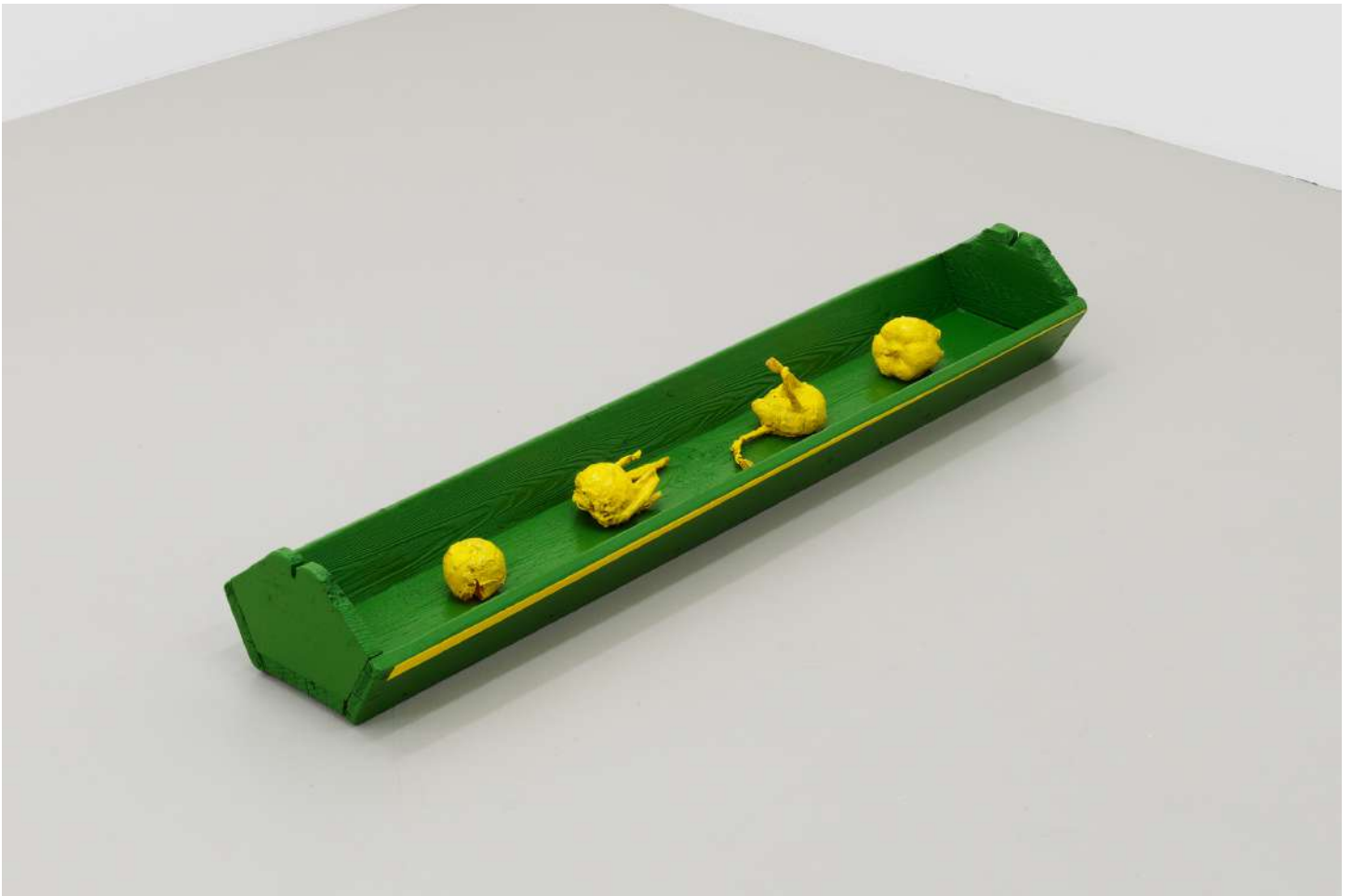
OLGA BALEMA

One reenters the garden by becoming a vegetable

(September 12 - November 8, 2015)

Kunstverein Nürnberg, Albrecht Durer Society, Bavaria















info@hannahhoffman.la
+1.213.263.9681

HANNAH HOFFMAN

OLGA BALEMA
Cannibals (May 1 - June 13, 2015)
Croy Nielsen, Berlin, Germany





Olga Balema, *Threat to Civilization 4* and
Threat to Civilization 5, 2015

Soft pvc, steel, water
16 x 32 x 27 inches (41 x 82 x 69.5 cm)
19 x 22 x 19 inches (50 x 56 x 50 cm)





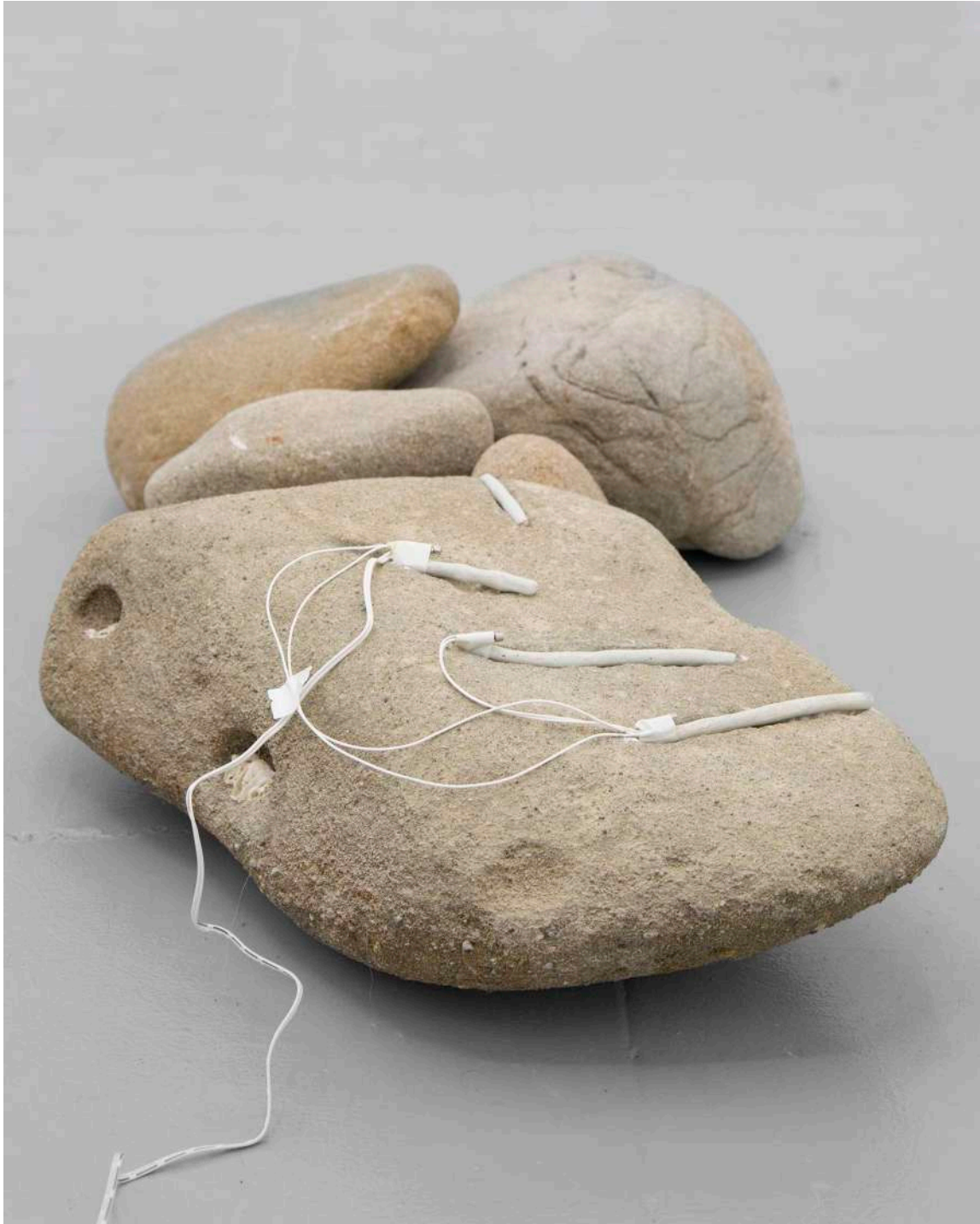


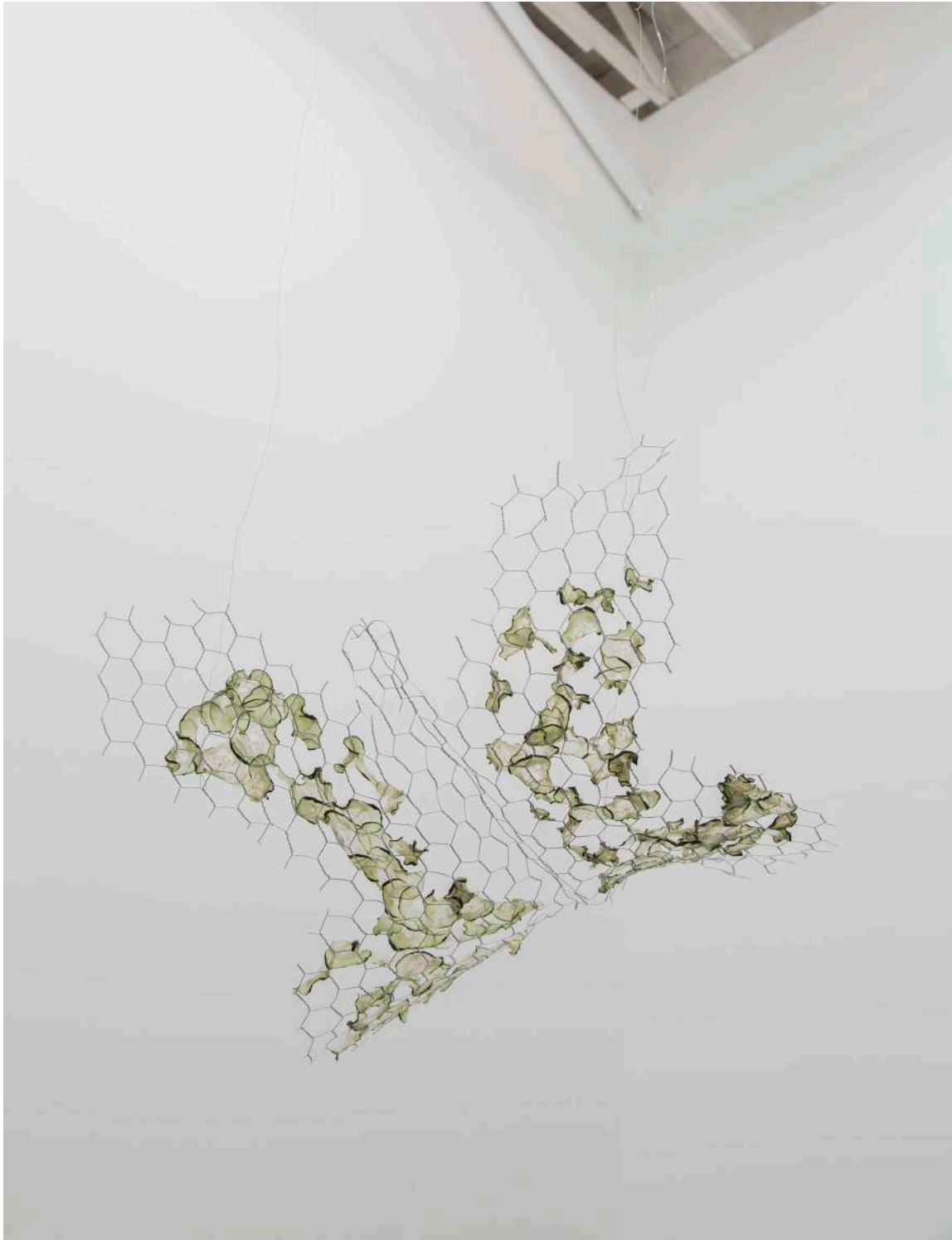
OLGA BALEMA with Anne De Vries
Listening (March 8 - April 19, 2015)
Michael Thibault, Los Angeles, CA, US















info@hannahhoffman.la
+1.213.263.9681

HANNAH HOFFMAN

OLGA BALEMA

Puddle, Pothole, Portal (October 2, 2014 - January 5, 2015)

Sculpture Center, Queens, NY, US



Olga Balema, *Interior biomorphic attachment*, 2014

Foam, latex, steel, pigment
80 x 80 x 9.84 inches (203 x 203 x 25 cm)





info@hannahhoffman.la
+1.213.263.9681

HANNAH HOFFMAN

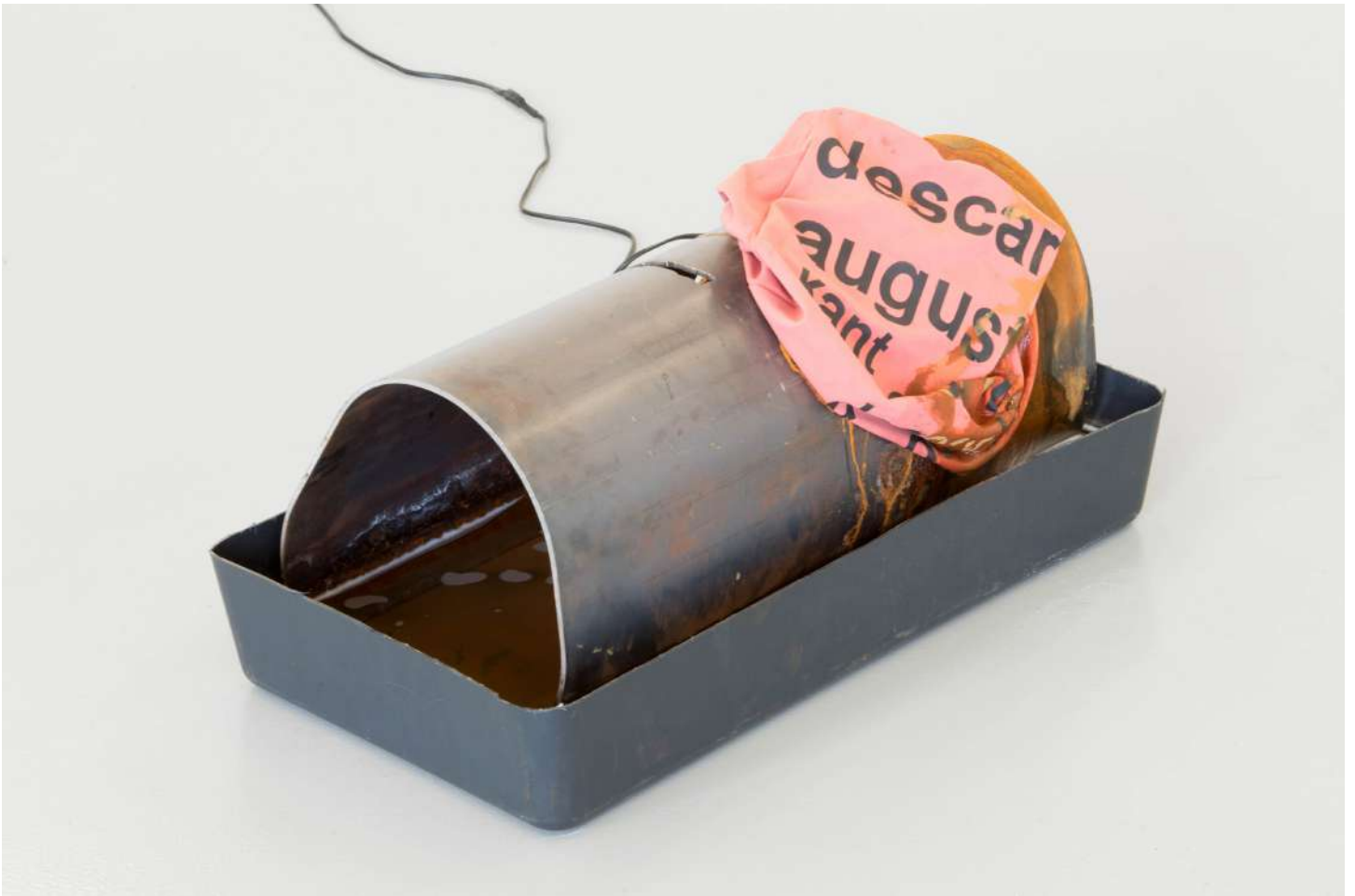
OLGA BALEMA

nature after nature (May 11 - August 17, 2014)

Fridericianum, Kassel, Germany

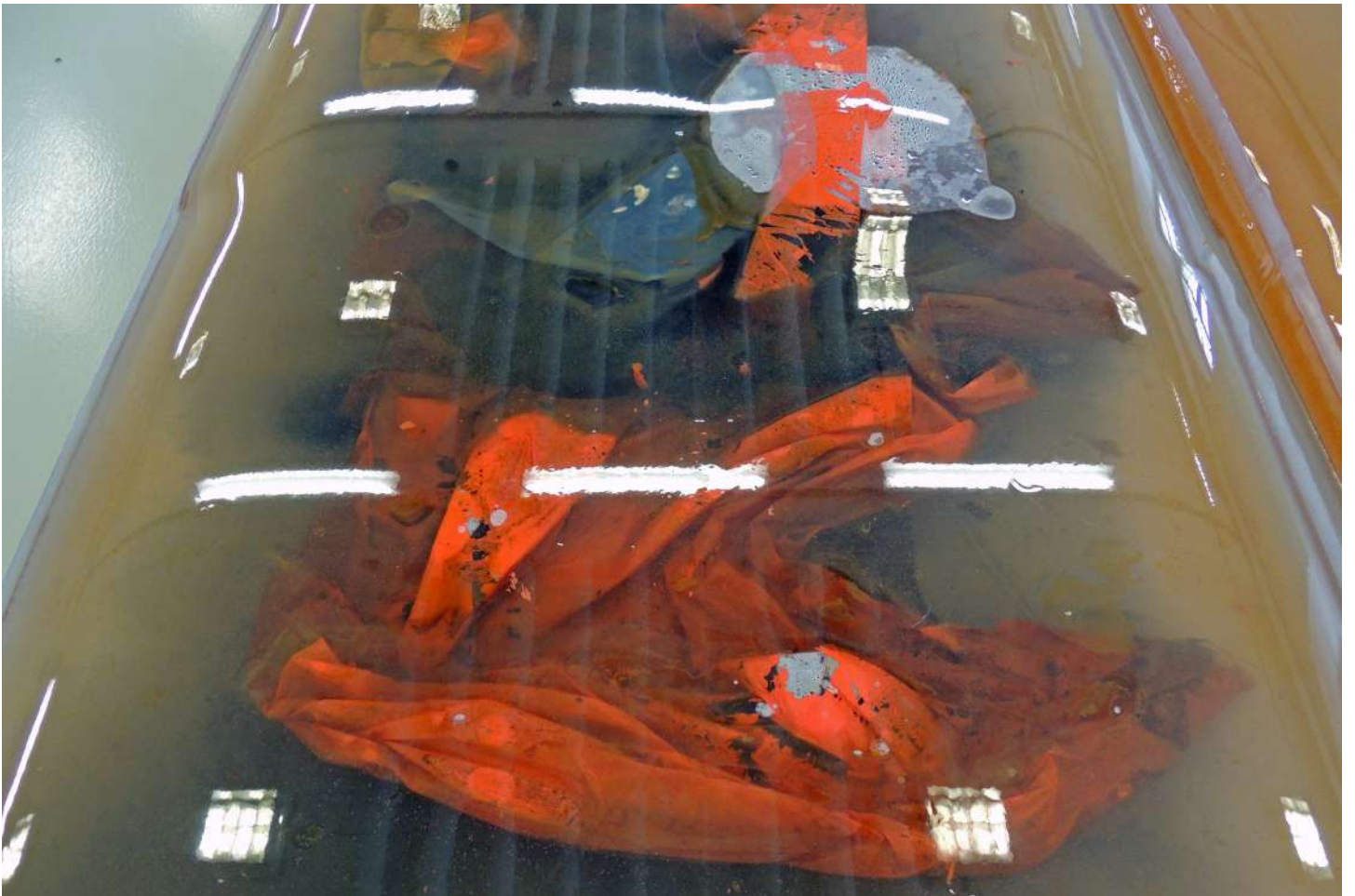
















OLGA BALEMA
Her Curves (May 15 - June 6, 2014)
High Art, Paris, France









info@hannahhoffman.la
+1.213.263.9681

HANNAH HOFFMAN

OLGA BALEMA

Body of Work (May 15 - June 6, 2014)

Galerie Fons Welters, Amsterdam, NL













