

RAPHAELA SIMON

**SELECT EXHIBITIONS
2016–2024**

HANNAH HOFFMAN

RAPHAELA SIMON
Born in Germany, 1986.
Lives and works in Berlin, Germany.

EDUCATION

- 2014 Kunstakademie Düsseldorf, Düsseldorf, Germany
- 2013 Akademie der Bildenden Künste München, Germany,
Class Prof. Günther Förg & Class Prof. Peter Doig

SOLO EXHIBITIONS

- 2024 (upcoming) Echo, Hannah Hoffman Gallery, Los Angeles, CA, US
- 2024 (upcoming) Phantom, Michael Werner Gallery, London, UK
- 2024 Die Nachahmung der Rose, Oldenburger Kunstverein, Oldenburg, Germany
- 2023 Blaue Nacht, Fondazione Giuliani, Rome, Italy
- 2021 Steine, Hannah Hoffman Gallery, Los Angeles, CA, US
- 2021 Raphaela Simon, Galerie Max Hetzler, Berlin, Germany
- 2020 The Fashion Show, Galerie Max Hetzler, Paris, France
- 2019 Erdbeeren, Michael Werner Gallery, London, UK
- 2019 Sterne, Max Hetzler, Berlin, Germany
- 2018 Staubsauger, Max Hetzler, Berlin, Germany
- 2017 Karo, TRAMPS and Michael Werner Gallery, New York, NY, US
- 2017 Staubsauger, Galerie Max Hetzler, Berlin, Germany
- 2016 Tischlein deck dich, Hannah Hoffman Gallery, Los Angeles, CA, US
- 2015 Last Man Standing, Tom Dick or Harry, Düsseldorf, Germany
- 2015 Raphaela Simon, TRAMPS, London, UK
- 2014 Time After Time, Tom Dick or Harry, Düsseldorf, Germany

SELECT GROUP EXHIBITIONS & EVENTS

- 2023 Birds Follow Spring, Michael Werner Gallery, New York, NY, US
- 2022 Es liebt Dich und Deine Körperlichkeit ein Verwirrter,

HANNAH HOFFMAN

- Kunsthalle Düsseldorf, Germany
- 2022 Interior, Michael Werner Gallery, London, UK
- 2021 Accesso, Alfonso Artiaco, Naples, Italy
- 2021 Friendship. Nature. Culture. 44 Years of the Daimler Art Collection, Works from the Collection 1920–2021, Daimler Art Collection, Berlin, Germany
- 2021 Fresh Faces from The Rachofsky Collection, Site 131, Dallas, TX, US
- 2020 Works on Paper, Michael Werner Gallery, East Hampton, NY, US
- 2020 About the Human Figure, Michael Werner Gallery, London, UK
- 2018 Surface Work, Victoria Miro, London, UK
- 2016 Dis Bild hängt schief, Galerie Max Hetzler, Berlin, Germany
- 2015 IMAGE SEARCH: FRANCIS PICABIA, SIGMAR POLKE, JÖRG IMMENDORFF, ALBERT OEHLER, JOHN STEZAKER, RITA ACKERMANN / HARMONY KORINE, MICHAEL WILLIAMS, RAPHAELA SIMON, SELECTED BY PARINAZ MOGADASSI, Hannah Hoffman Gallery, Los Angeles, CA, US
- 2014 lady work work, TRAMPS, London, UK
- 2014 Klasse Doig, Display Gallery, London, UK
- 2013 Doig Klasse: Düsseldorf - Edinburgh, Canongate Venture, Edinburgh, Scotland

info@hannahhoffman.la
+1.213.263.9681

HANNAH HOFFMAN

RAPHAELA SIMON

Die Nachahmung der Rose (February 16 - April 21, 2024)

Oldenburger Kunstverein, Oldenburg, Germany























info@hannahhoffman.la
+1.213.263.9681

HANNAH HOFFMAN

RAPHAELA SIMON

Blaeu Nacht (May 11 - July 22, 2023)

Fondazione Giuliani per l'arte contemporanea, Rome, Italy























info@hannahhoffman.la
+1.213.263.9681

HANNAH HOFFMAN

RAPHAELA SIMON

Nighthawks (April 27 - June 10, 2023)

Galerie Max Hetzler, Berlin, Germany







Raphaela Simon, *Vic*, 2023

Oil on canvas
74 3/4 x 66 7/8 inches (90 x 170 cm)

















Raphaela Simon, *Biss (Bite)*, 2023

Oil on canvas
86 5/8 x 82 5/8 inches (220 x 210 cm)



RAPHAELA SIMON

Es liebt Dich und Deine Körperlichkeit ein Verwirrte

(December 10, 2022 - February 19, 2023)

Kunsthalle Düsseldorf, Düsseldorf, Germany

















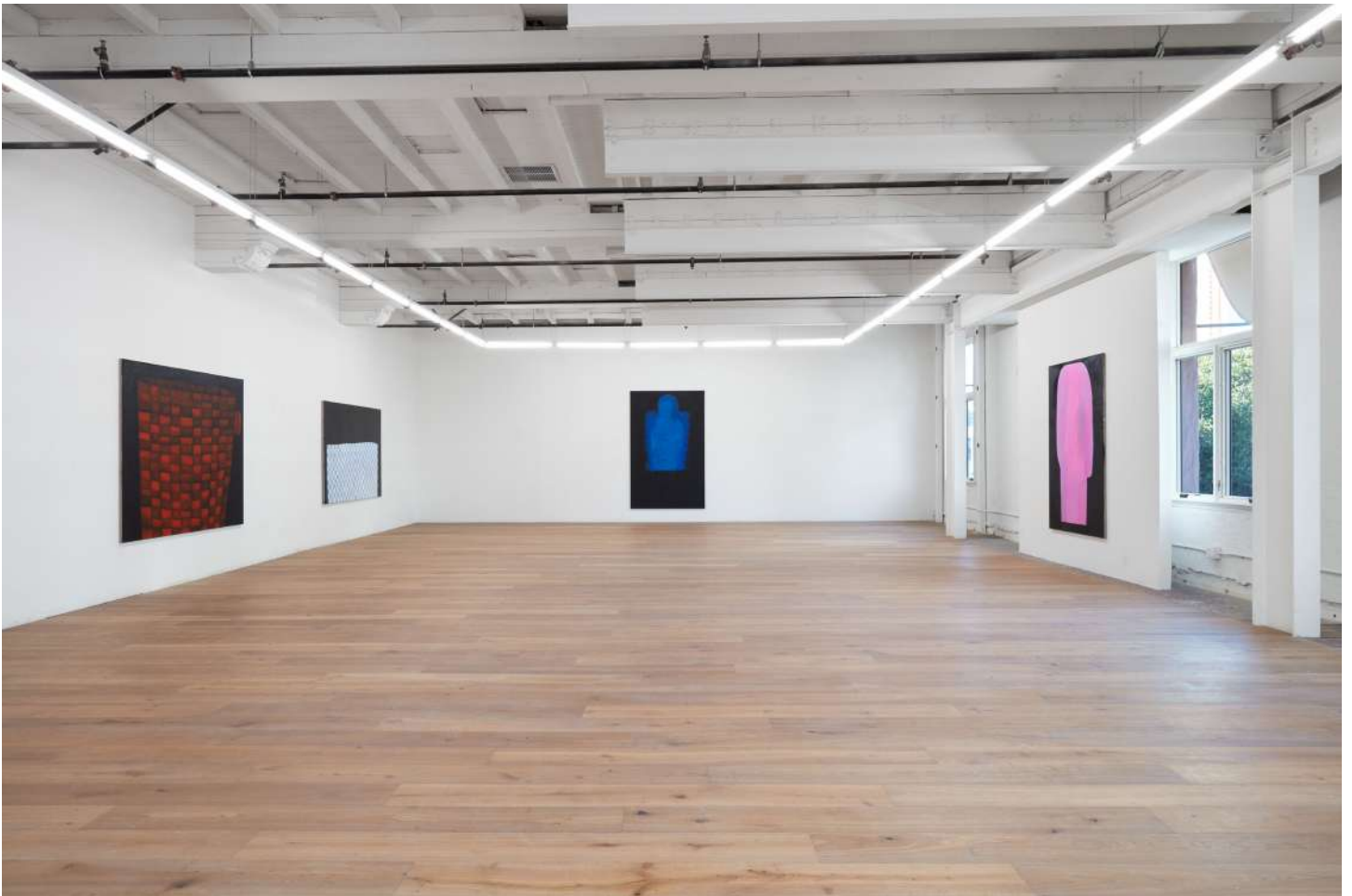
info@hannahhoffman.la
+1.213.263.9681

HANNAH HOFFMAN

RAPHAELA SIMON

Steine (December 11, 2021 - January 29, 2022)

Hannah Hoffman, Los Angeles, CA, US

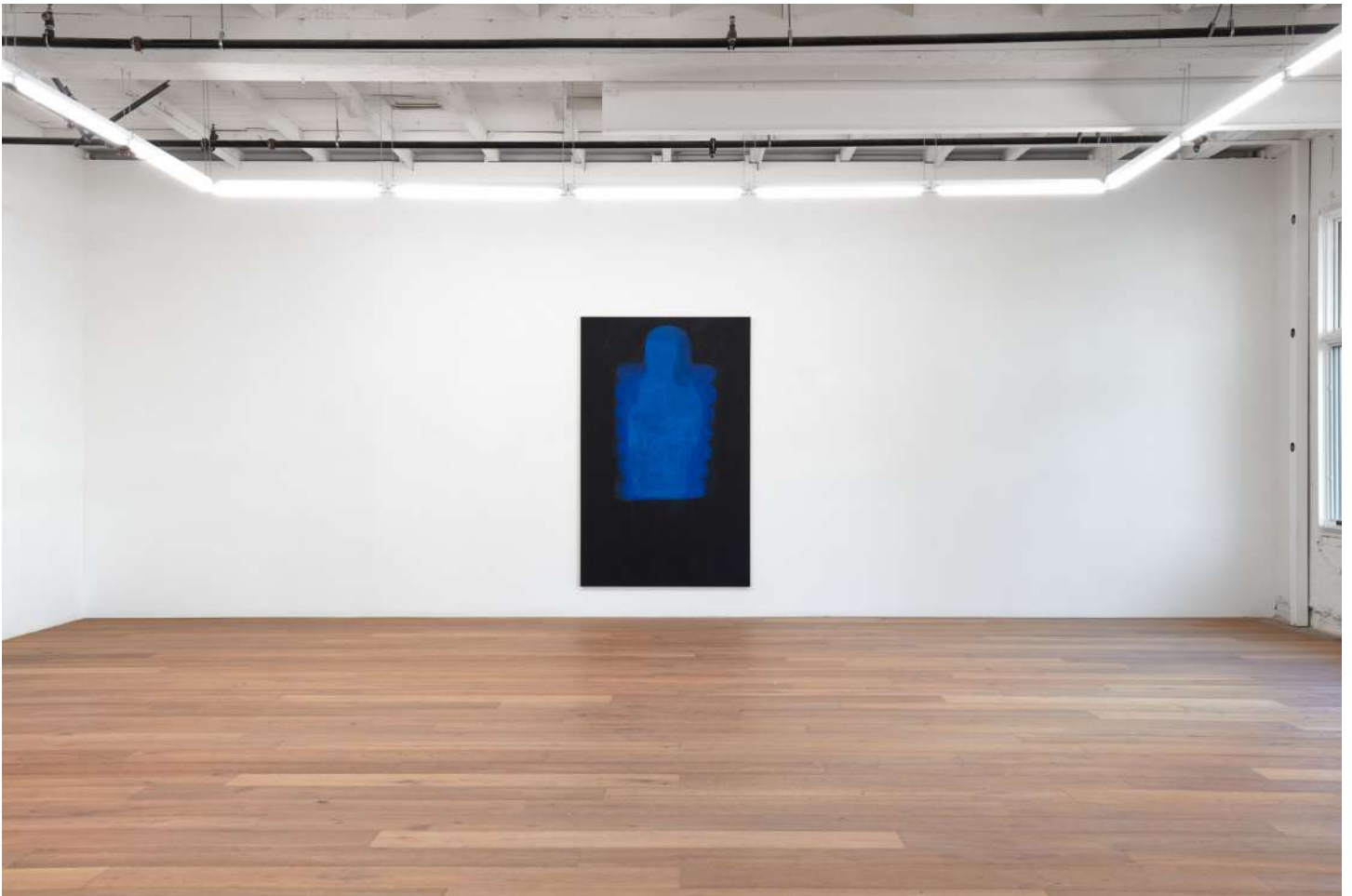




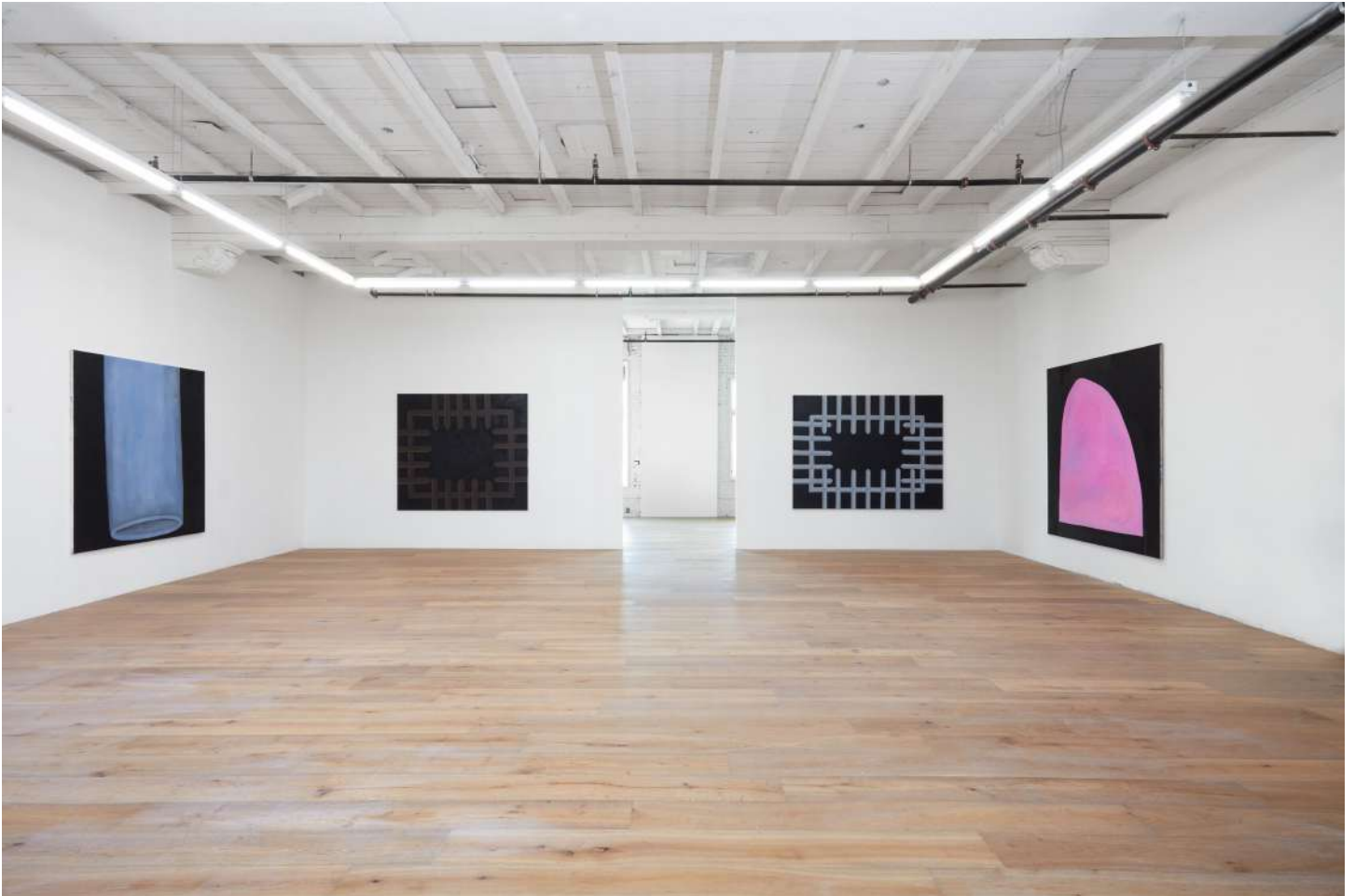
Raphaela Simon, *Eimer (Bucket)*, 2021

Oil on canvas
66.93 x 82.68 inches (170 x 210 cm)







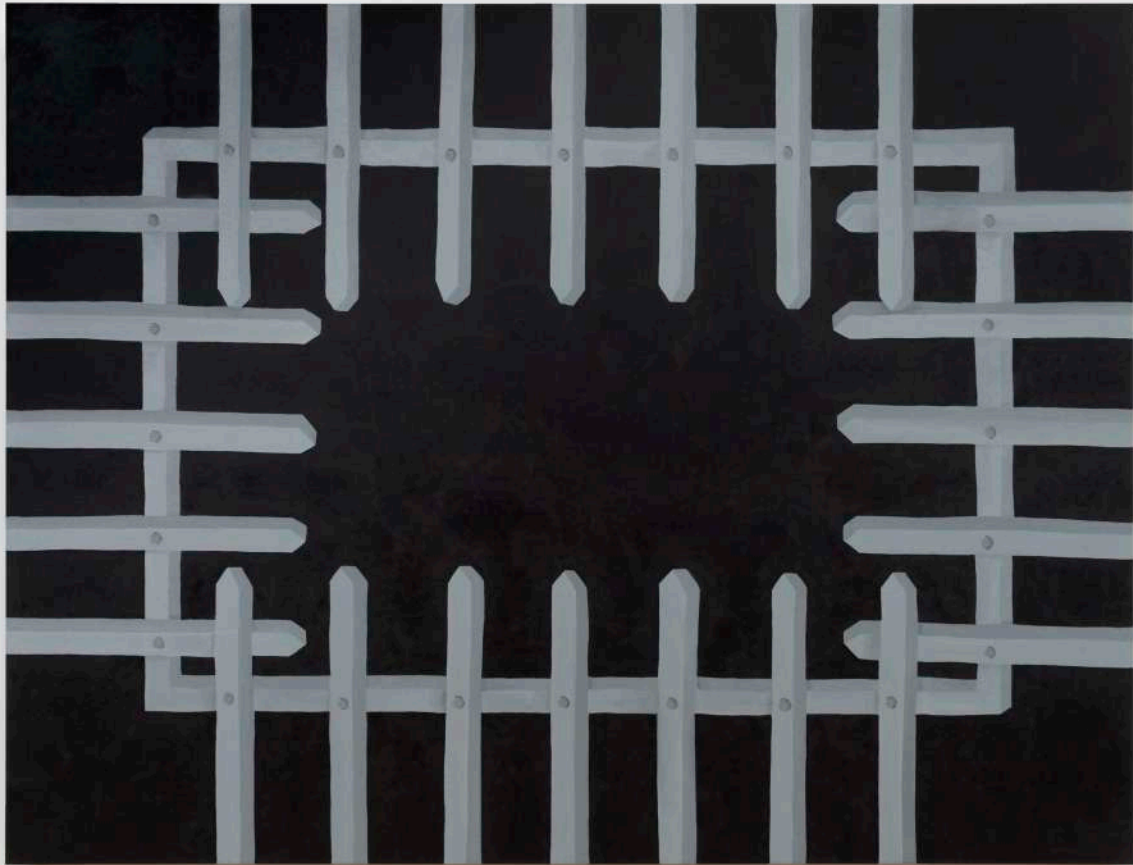




Raphaela Simon, *Langes Grundstück (Long Property)*, 2021

Oil on canvas

62.99 x 82.68 inches (160 x 210 cm)





info@hannahhoffman.la
+1.213.263.9681

HANNAH HOFFMAN

RAPHAELA SIMON
(September 2 - December 11, 2021)
Galerie Max Hetzler, Berlin, Germany









Raphaela Simon, *Blauer Käfig (Blue Cage)*, 2020

Oil on canvas

72 7/8 x 82 5/8 inches (185 x 210 cm)



info@hannahhoffman.la
+1.213.263.9681

HANNAH HOFFMAN

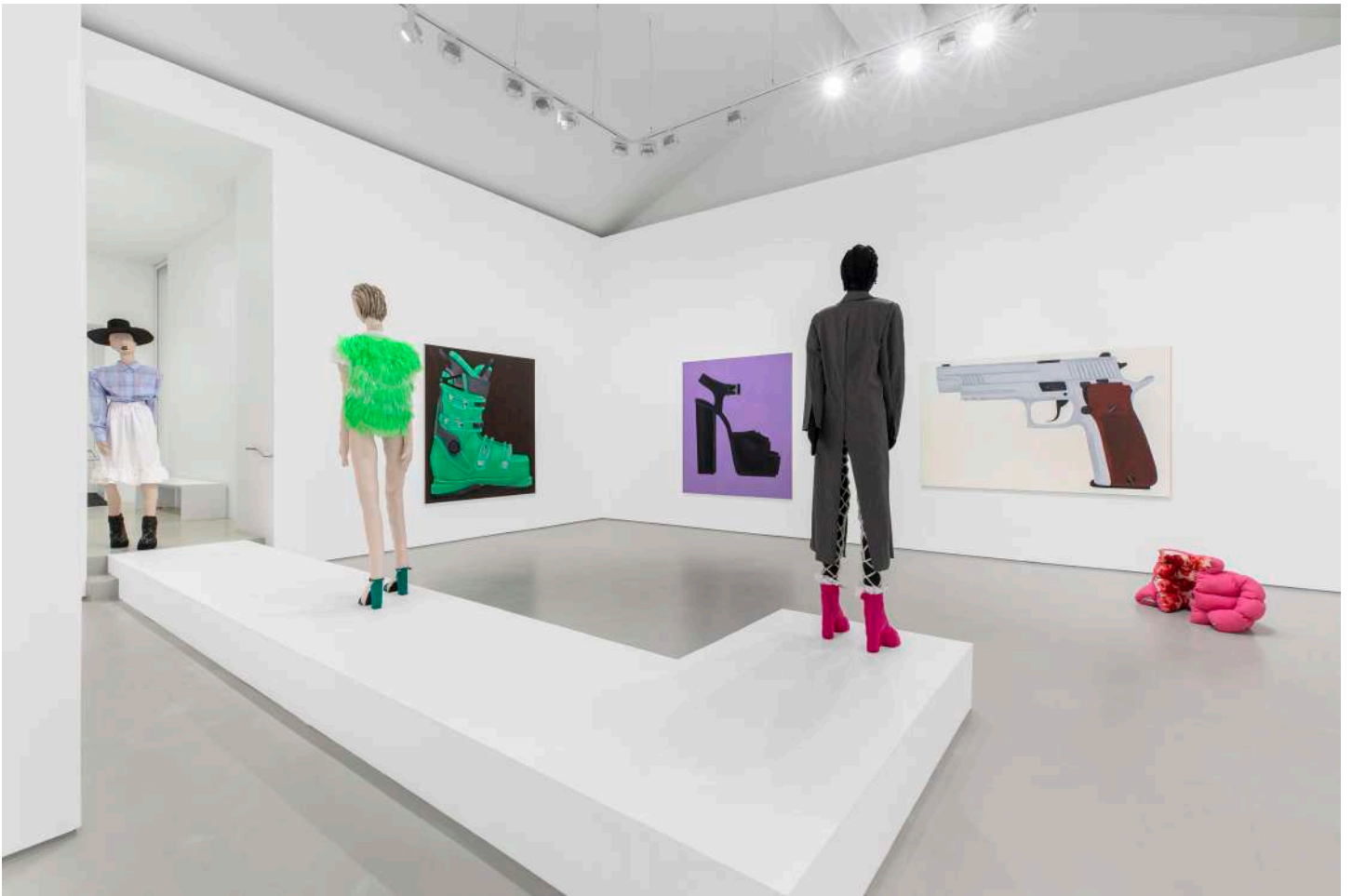
RAPHAELA SIMON

The Fashion Show (December 5, 2020 - January 2021)

Galerie Max Hetzler, Paris, France







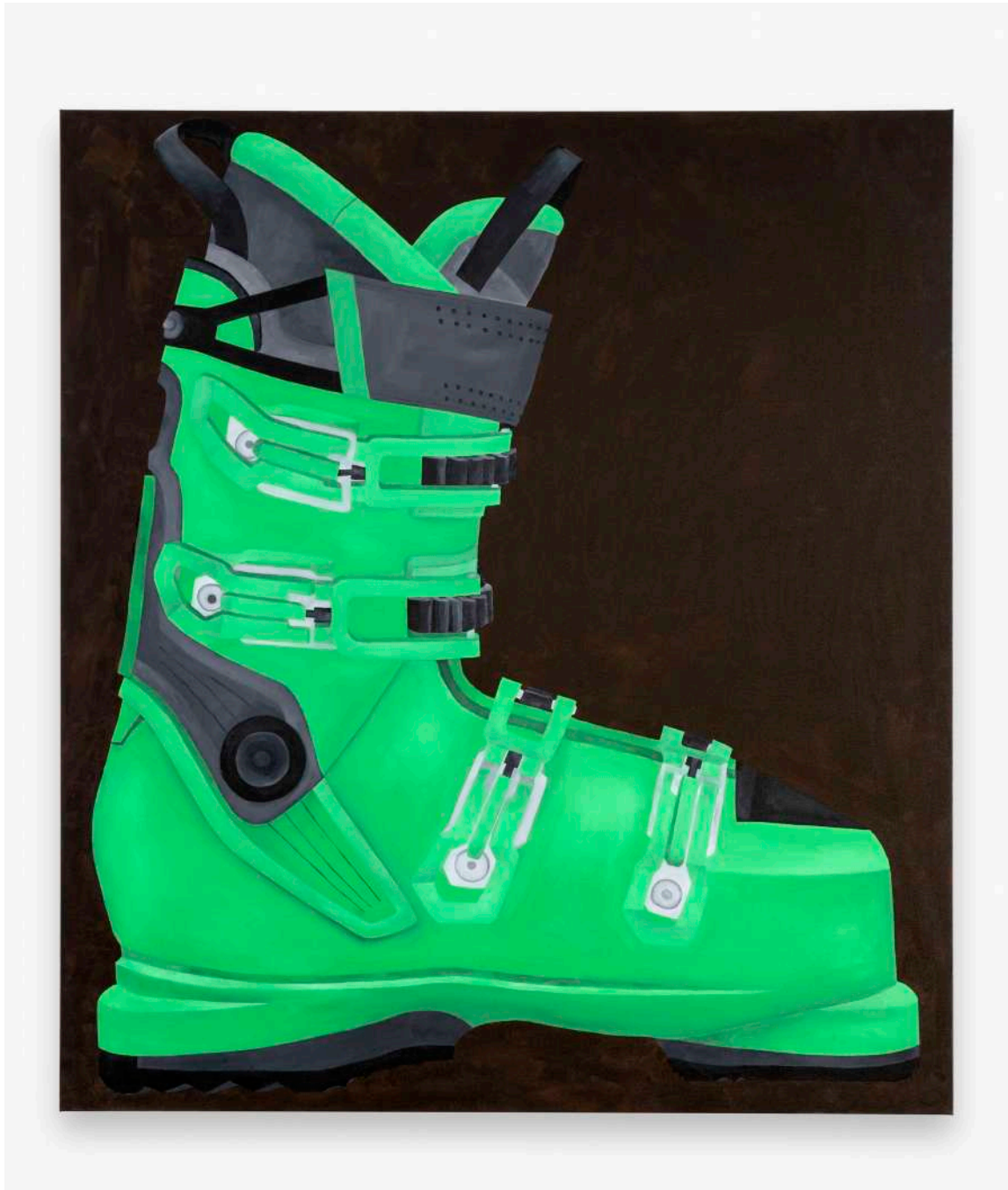






Raphaela Simon, *Skischuh (Ski Boot)*, 2020

Oil on canvas
76 3/4 x 68 7/8 inches (195 x 175 cm)



Raphaela Simon, *Pistole (Pistol)*, 2020

Oil on canvas
57 1/8 x 88 5/8 inches (145 x 225 cm)



info@hannahhoffman.la
+1.213.263.9681

HANNAH HOFFMAN

RAPHAELA SIMON

Erdbeeren (November 22, 2019 - January 18, 2020)

Michael Werner Gallery, London, UK





















info@hannahhoffman.la
+1.213.263.9681

HANNAH HOFFMAN

RAPHAELA SIMON
Sterne (January 18 - February 16, 2019)
Galerie Max Hetzler, Berlin, Germany





















info@hannahhoffman.la
+1.213.263.9681

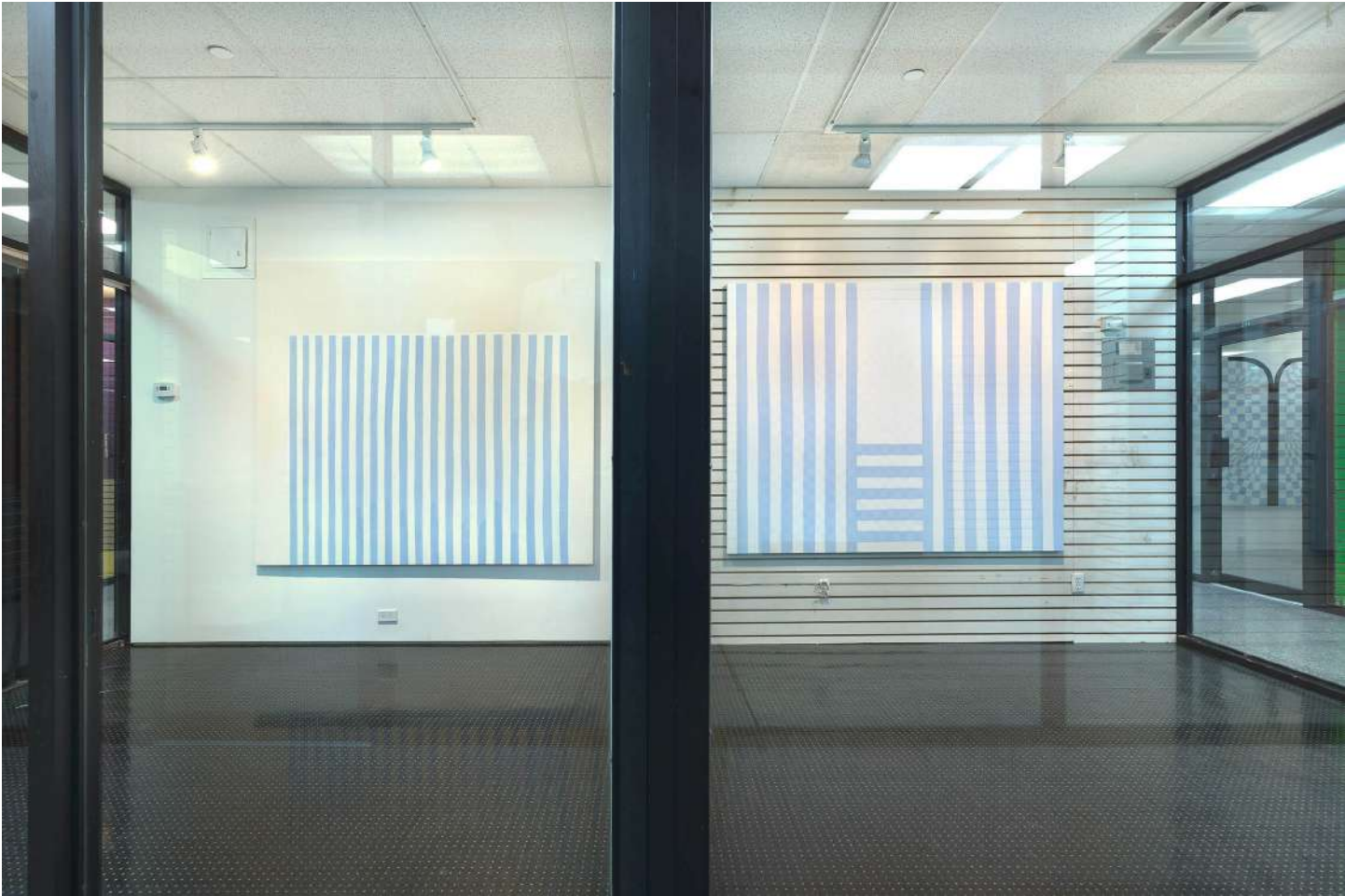
HANNAH HOFFMAN

RAPHAELA SIMON

Karo (November 5, 2017 - January 30, 2019)

Tramps with Michael Werner Gallery, New York, NY, US













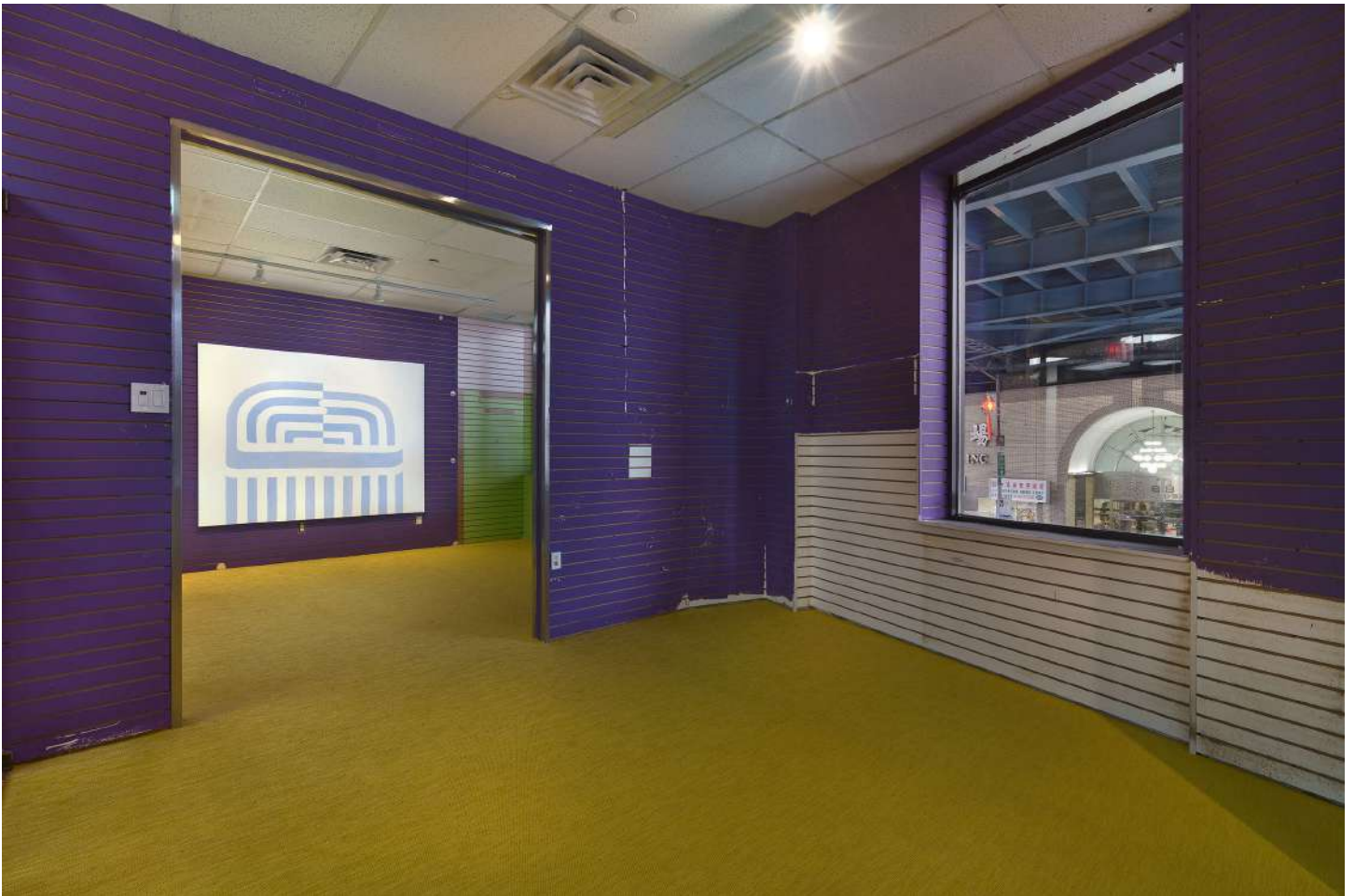










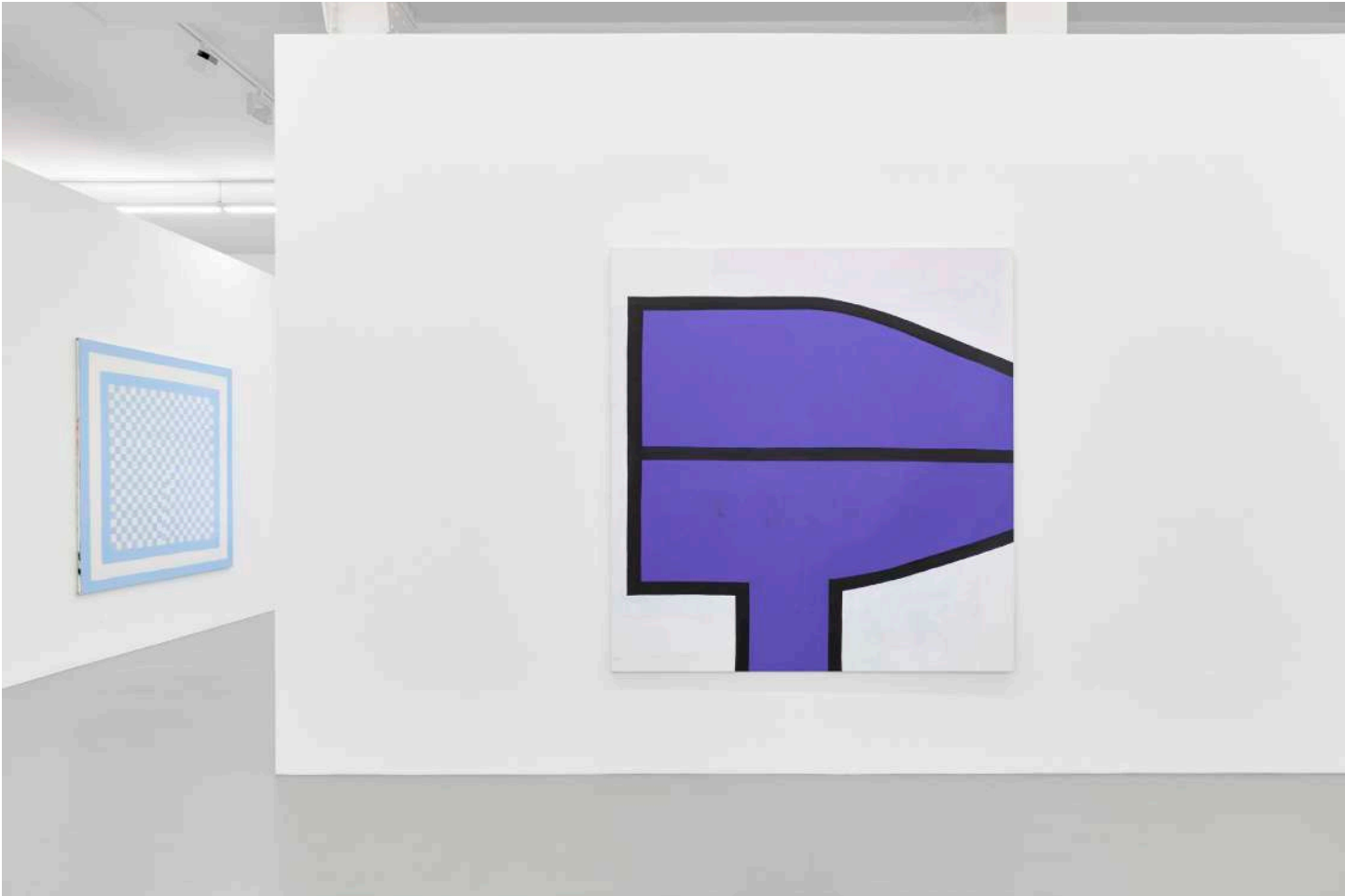


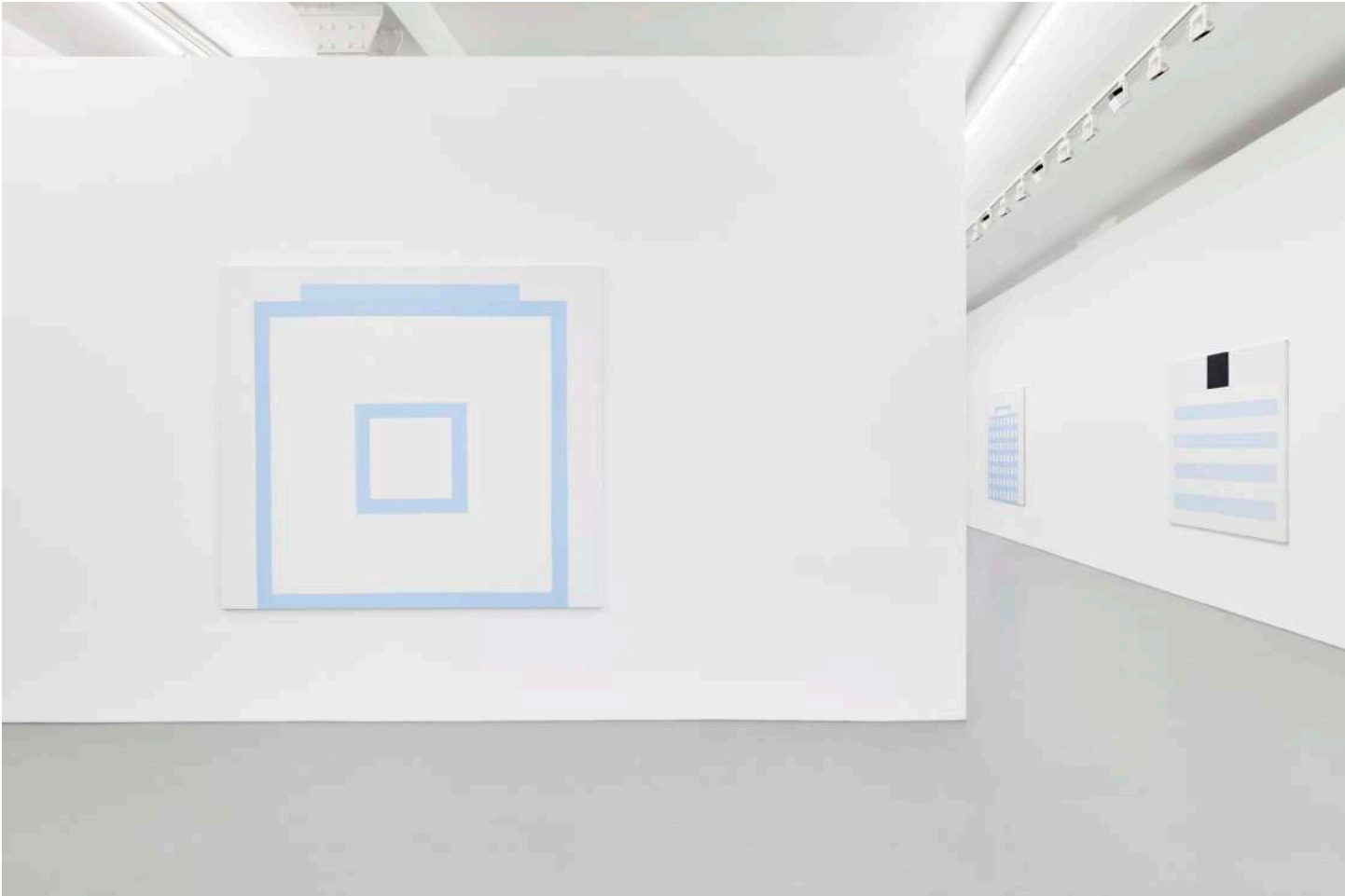
info@hannahhoffman.la
+1.213.263.9681

HANNAH HOFFMAN

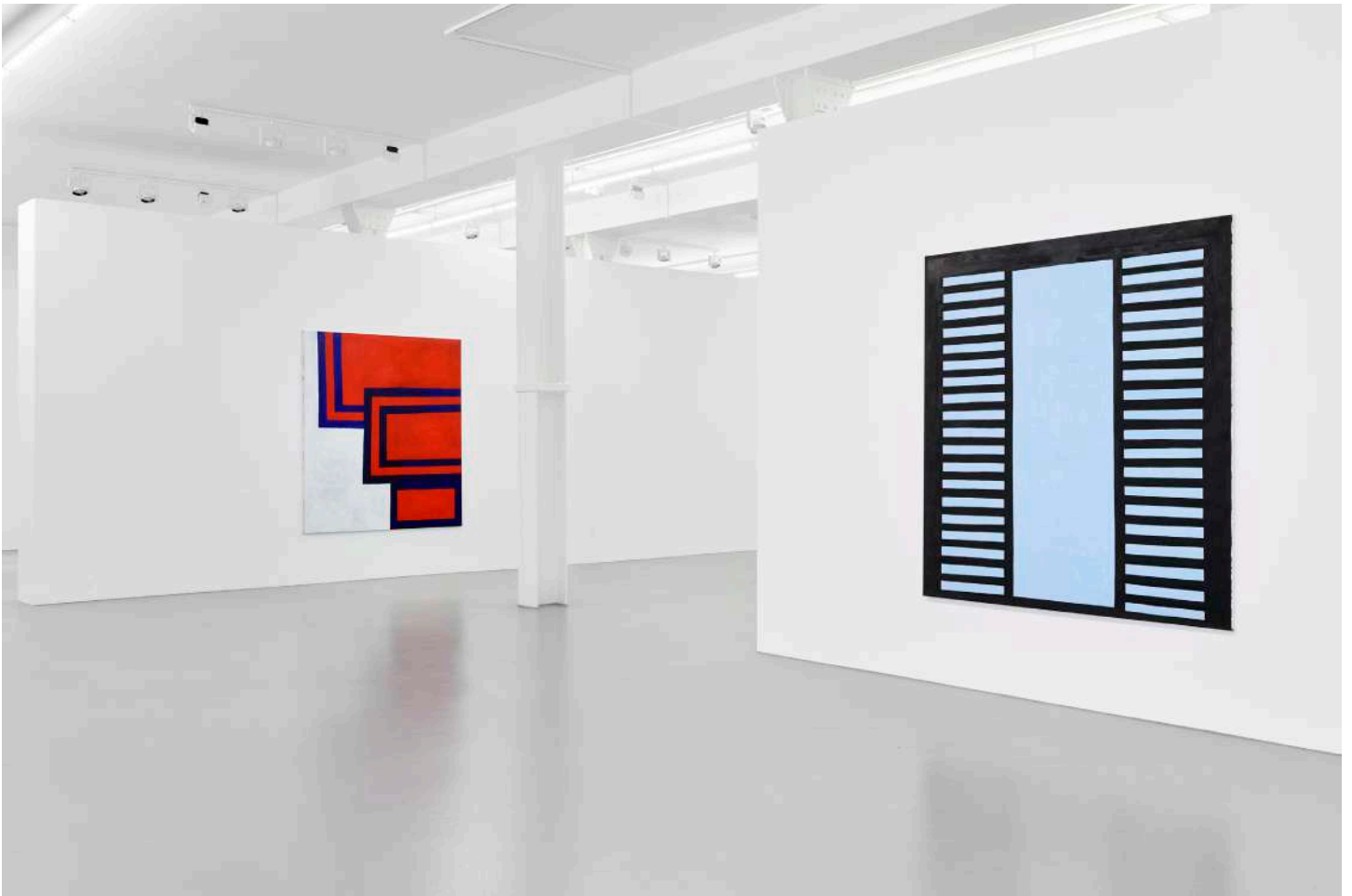
RAPHAELA SIMON
Staubsauger (March 17 - April 22, 2017)
Galerie Max Hetzler, Berlin, Germany

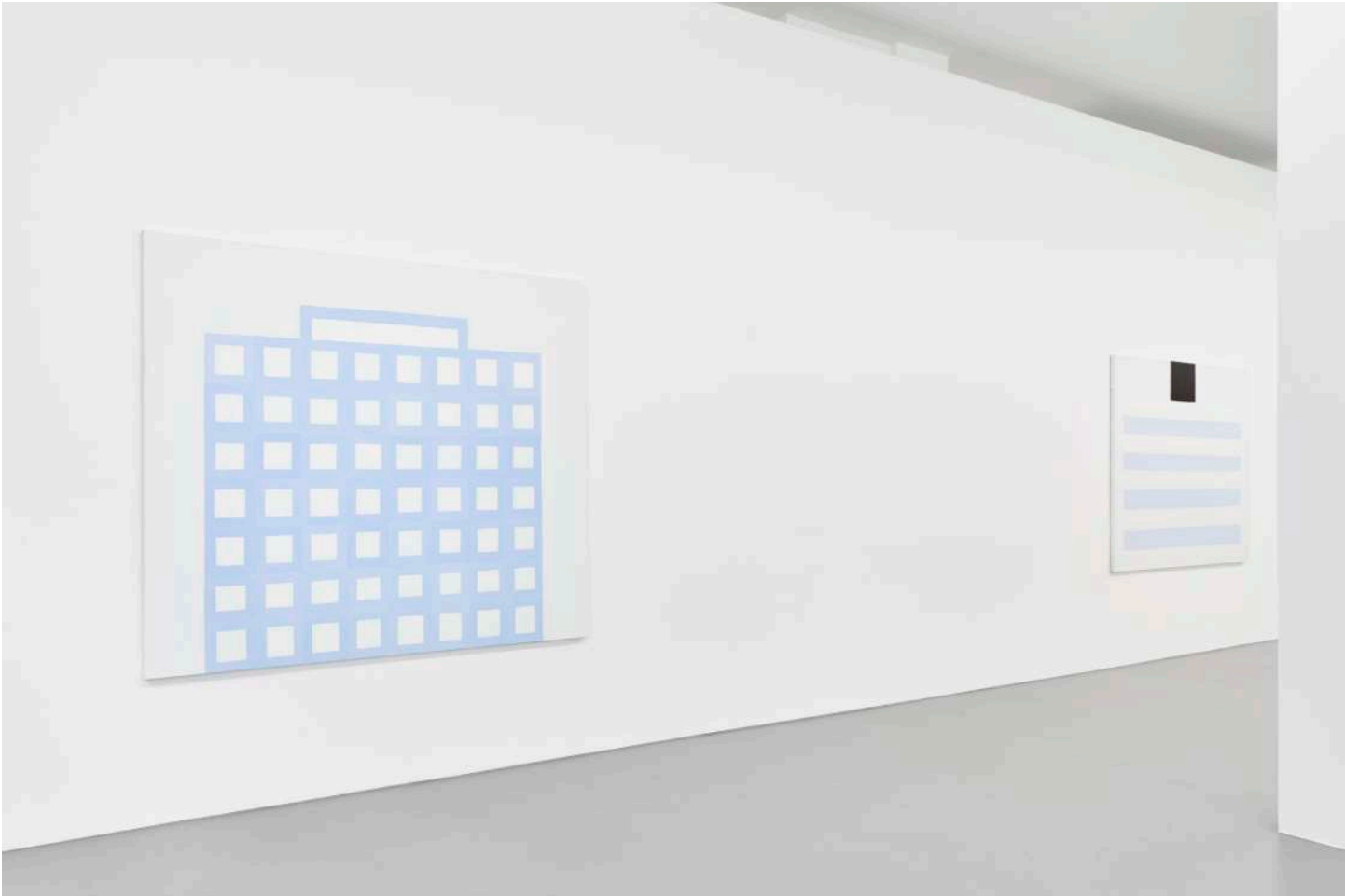


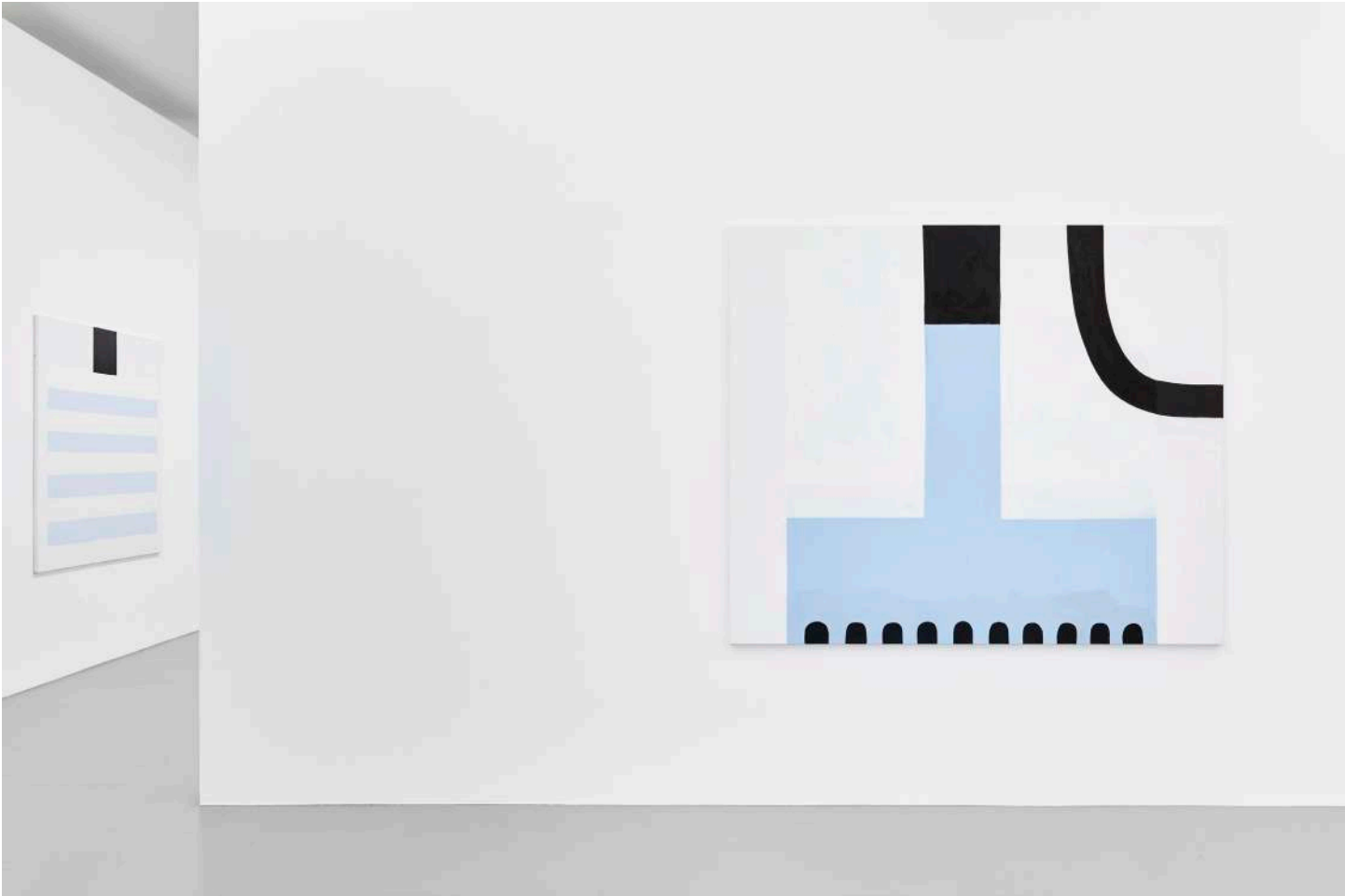












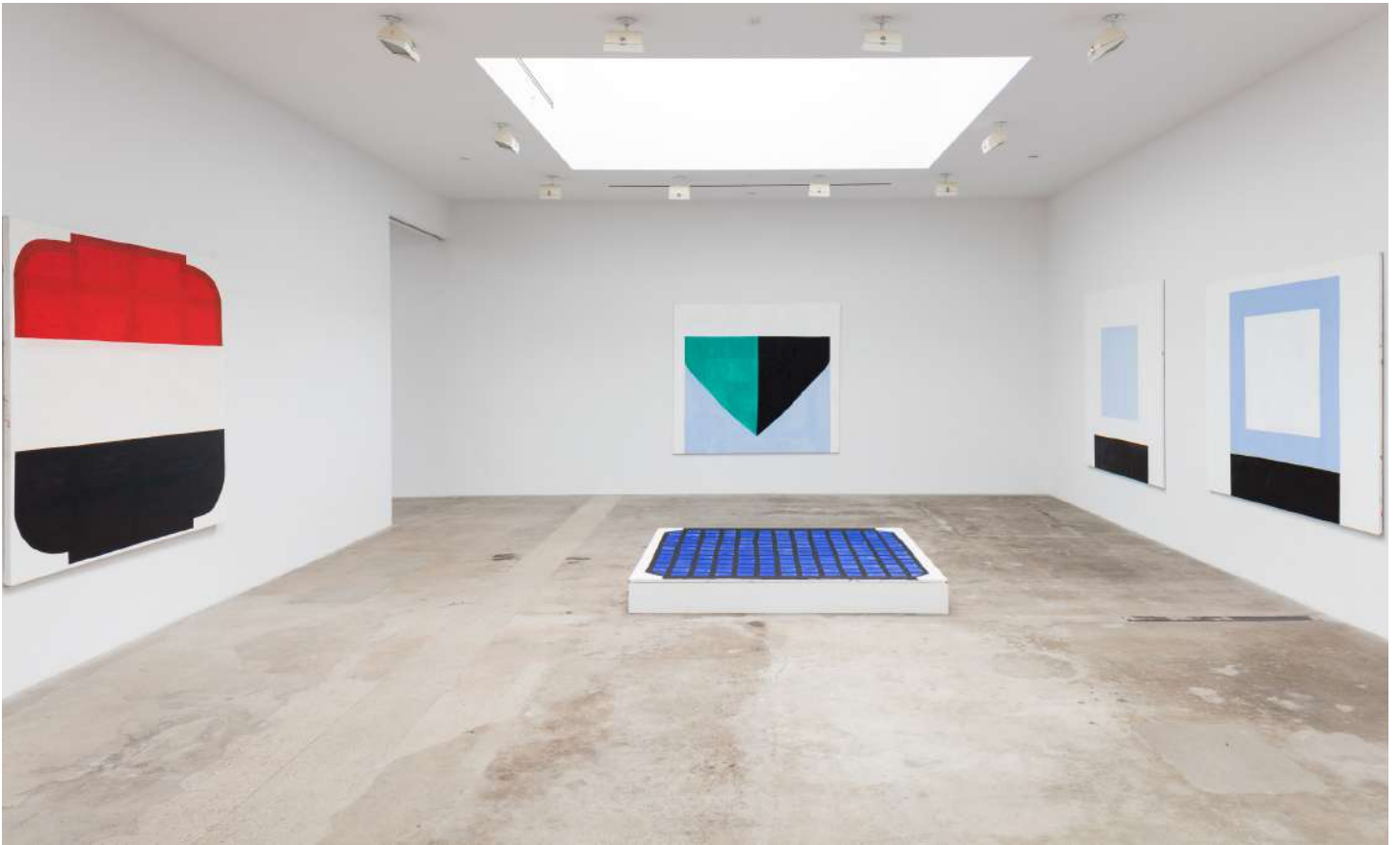


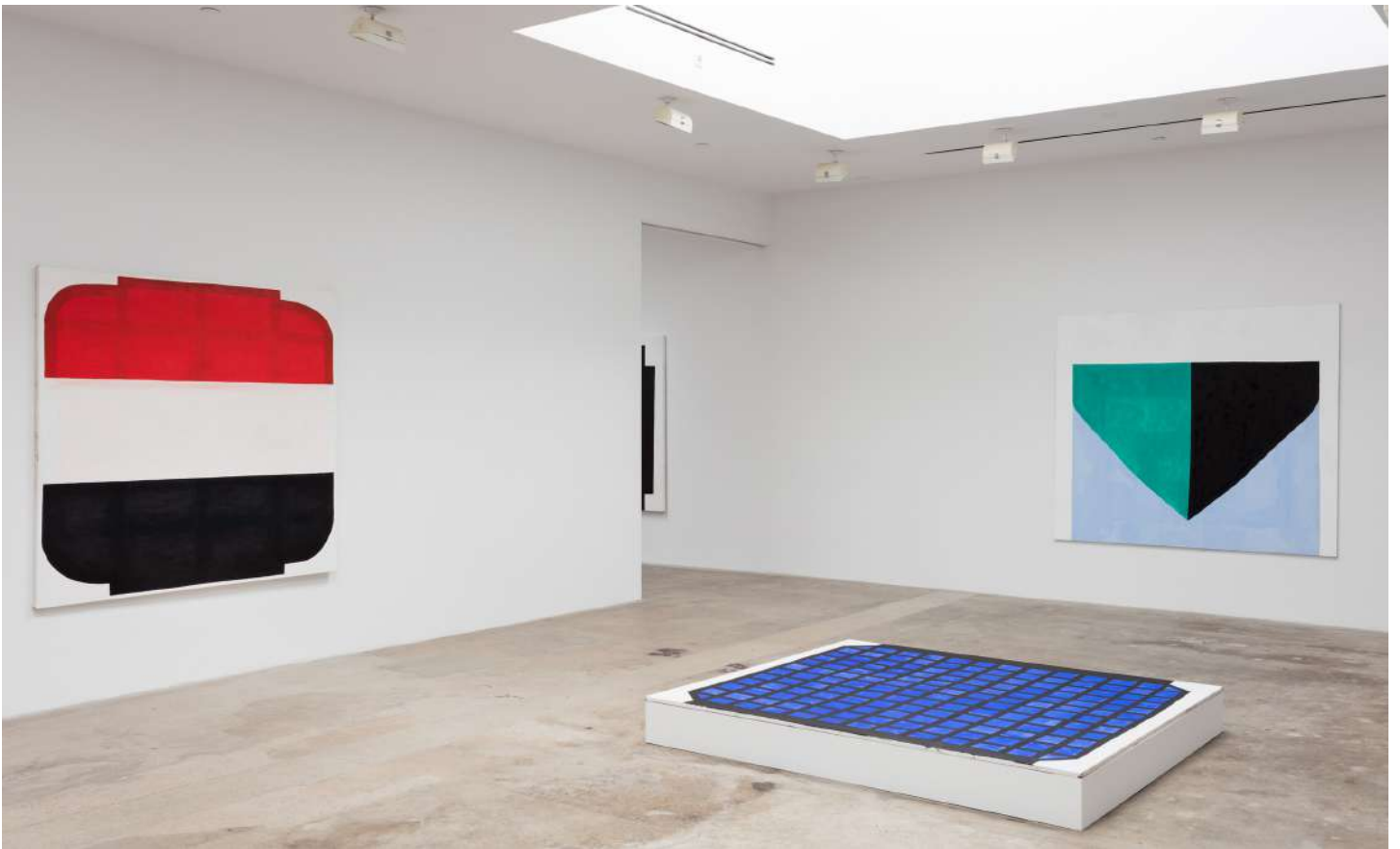
info@hannahhoffman.la
+1.213.263.9681

HANNAH HOFFMAN

RAPHAELA SIMON
Tischlein Deck Dich (April 1 - May 21, 2016)
Hannah Hoffman, Los Angeles, CA, US







Raphaela Simon, *Eisbrecher*, 2016

Oil on canvas
70.87 x 78.74 inches (180 x 200 cm)











Raphaela Simon, *Im liegen essen (lying down to eat)*, 2015

Oil on canvas
69.88 x 83.86 inches

